



park
planning &
development



866 acres
of developed park land



6 community parks





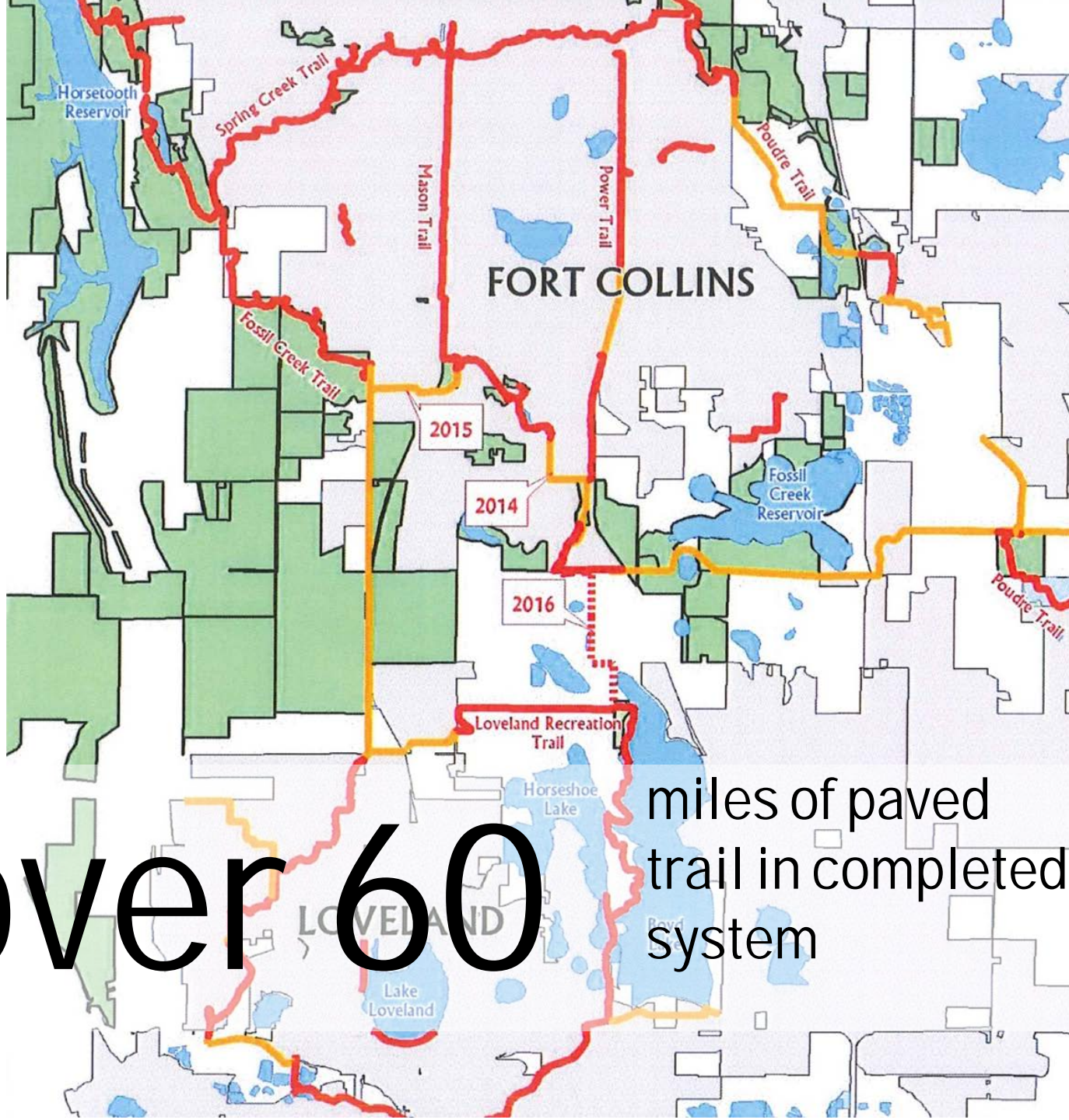
49 neighborhood
parks

36 miles
of paved trails



over 60

miles of paved
trail in completed
system





top 3

citizen survey – parks & trails



We acquire and develop neighborhood and community parks and the City's paved recreational trail system



We are creating a park and trail legacy for the community

Neighborhood Parks

- **Develop a park in each square mile of the city that is primarily residential**
- **Standard of 2.5 acres per 1000 population**
- **Funded from one time fee on new residential development**
- **Typically construct one park every other year**
- **Day use park with active and passive recreational items**
- **Examples: Overland, Homestead, Registry, Waters Way**

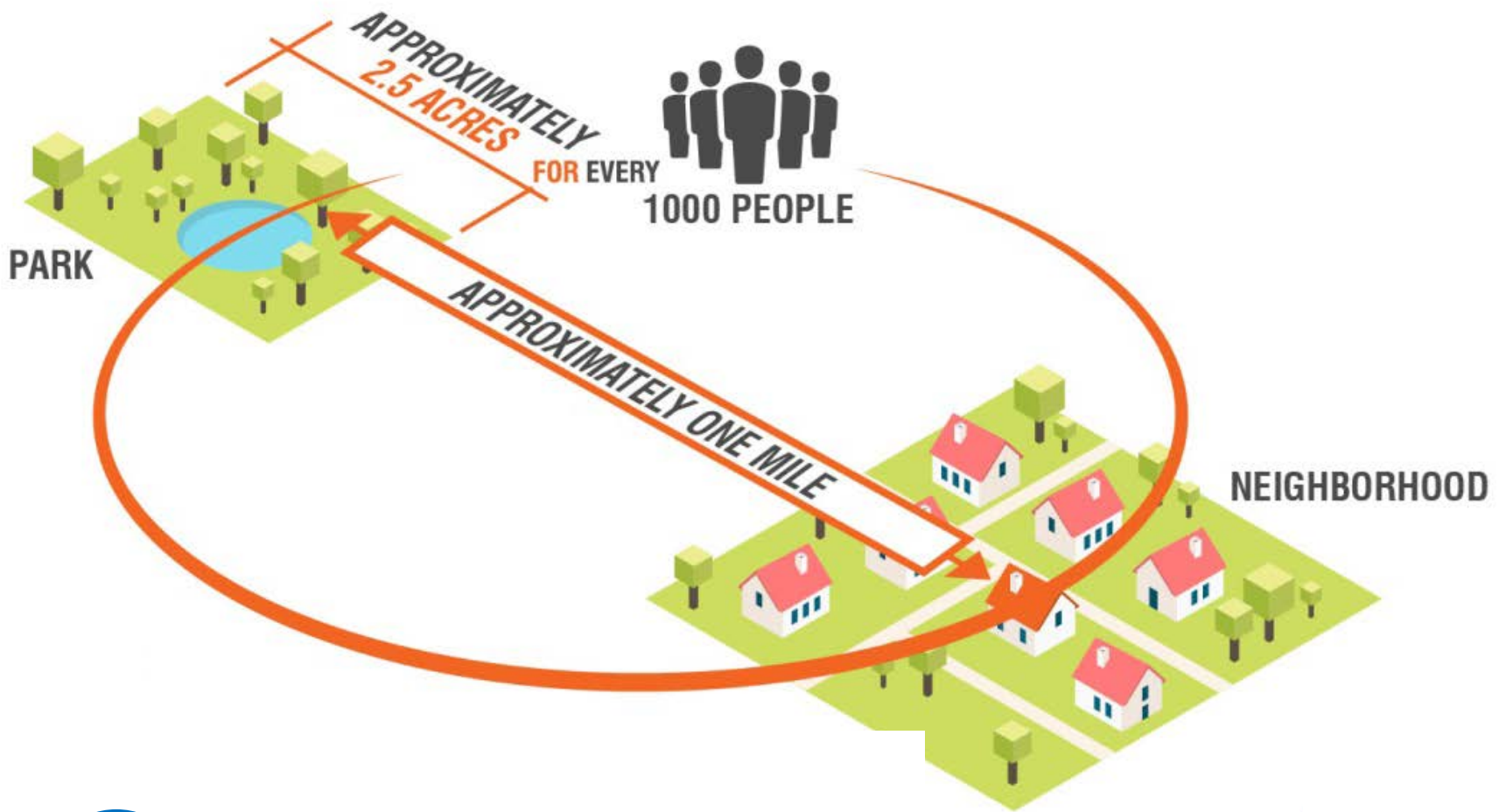


Community Parks

- **Develop a community park to serve about a 4 mile radius**
- **Standard of 4.5 acres per 1000 population**
- **Funded from one time fee on new residential development**
- **Multi-use park with lighted facilities and special structures/facilities**
- **Examples: Fossil Creek, Spring Canyon, City, Rolland Moore**



park
development
process



1

Determine park location and size

2

Purchase
land & trail
access



3



Collect fees as
development occurs

4

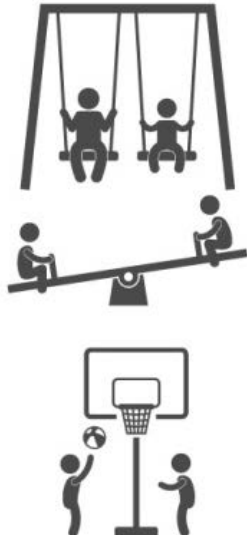
Determine water
needs and source



5

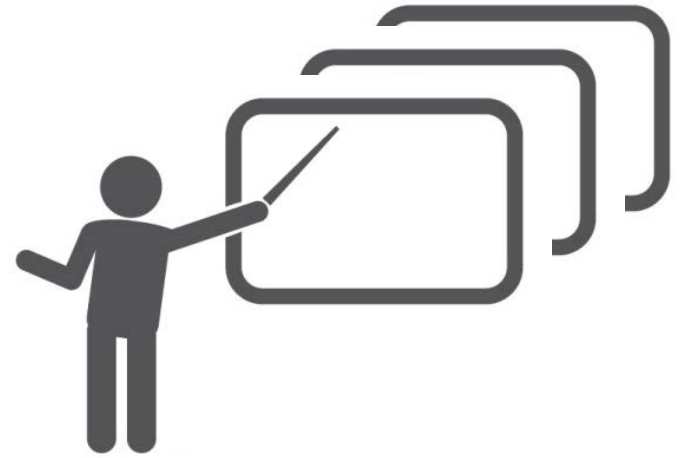
Begin design after
development is 75%
complete





6

Identify needs



7

Develop alternatives



8

Neighborhood
comment



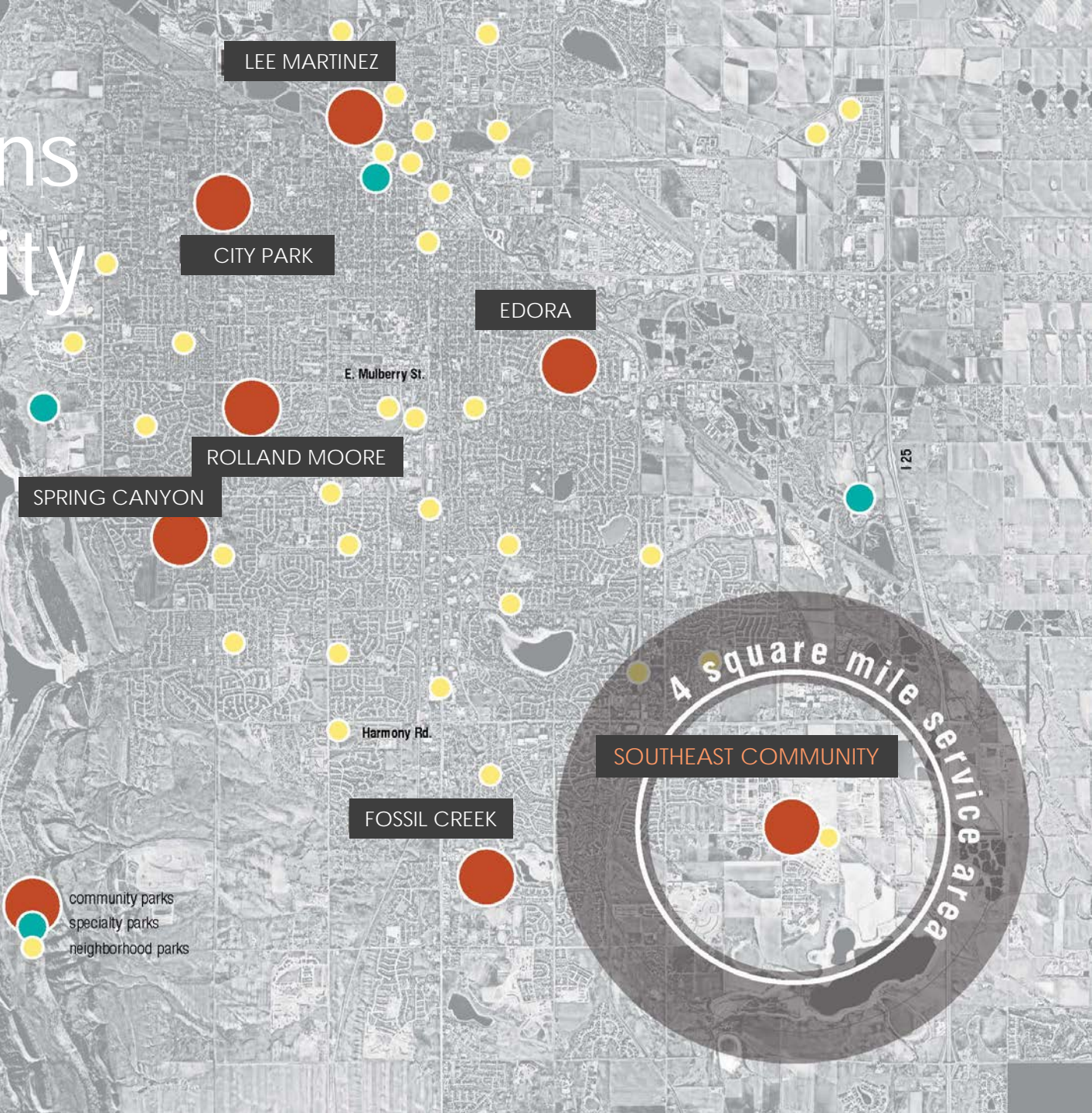
9

Prepare final plans &
construct park



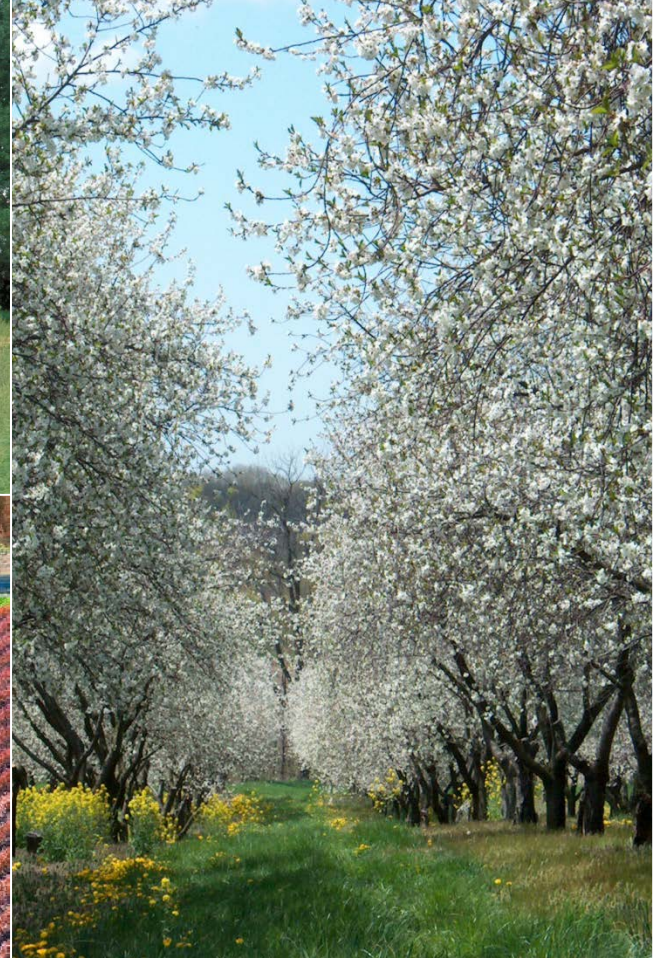
Southeast Community Park

Fort Collins Community Parks



Project Status

- **4 project community meetings conducted**
- **Community comment received at meetings and on web site**
- **Construction documents have been finalized**
- **The project was recently bid**
- **Selection of a final name for the park is in process**
- **Construction anticipated to begin in early Spring**
- **Park opening anticipated Spring/Summer 2017**

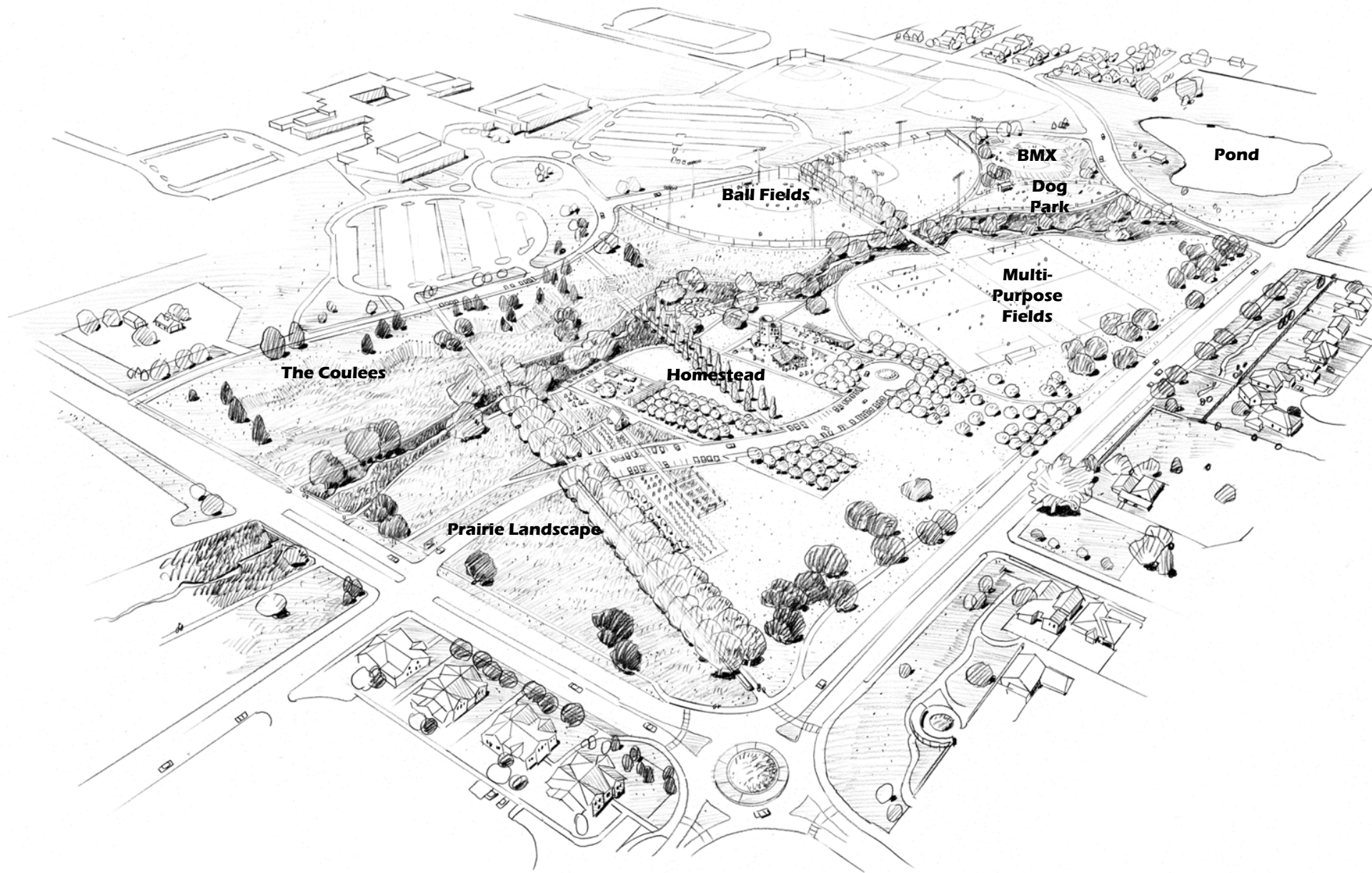












The Coulees

Ball Fields

BMX

**Dog
Park**

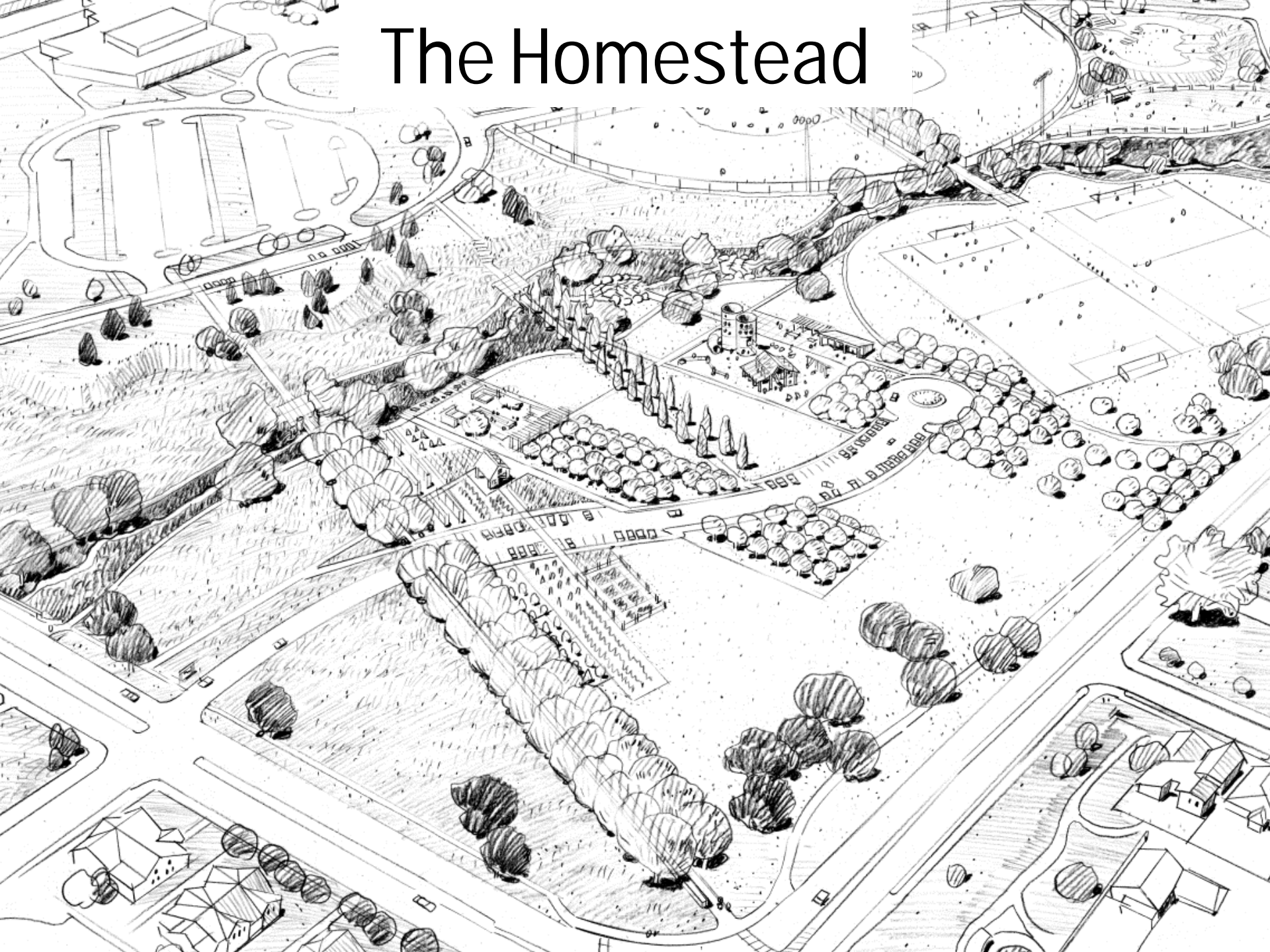
Pond

**Multi-
Purpose
Fields**

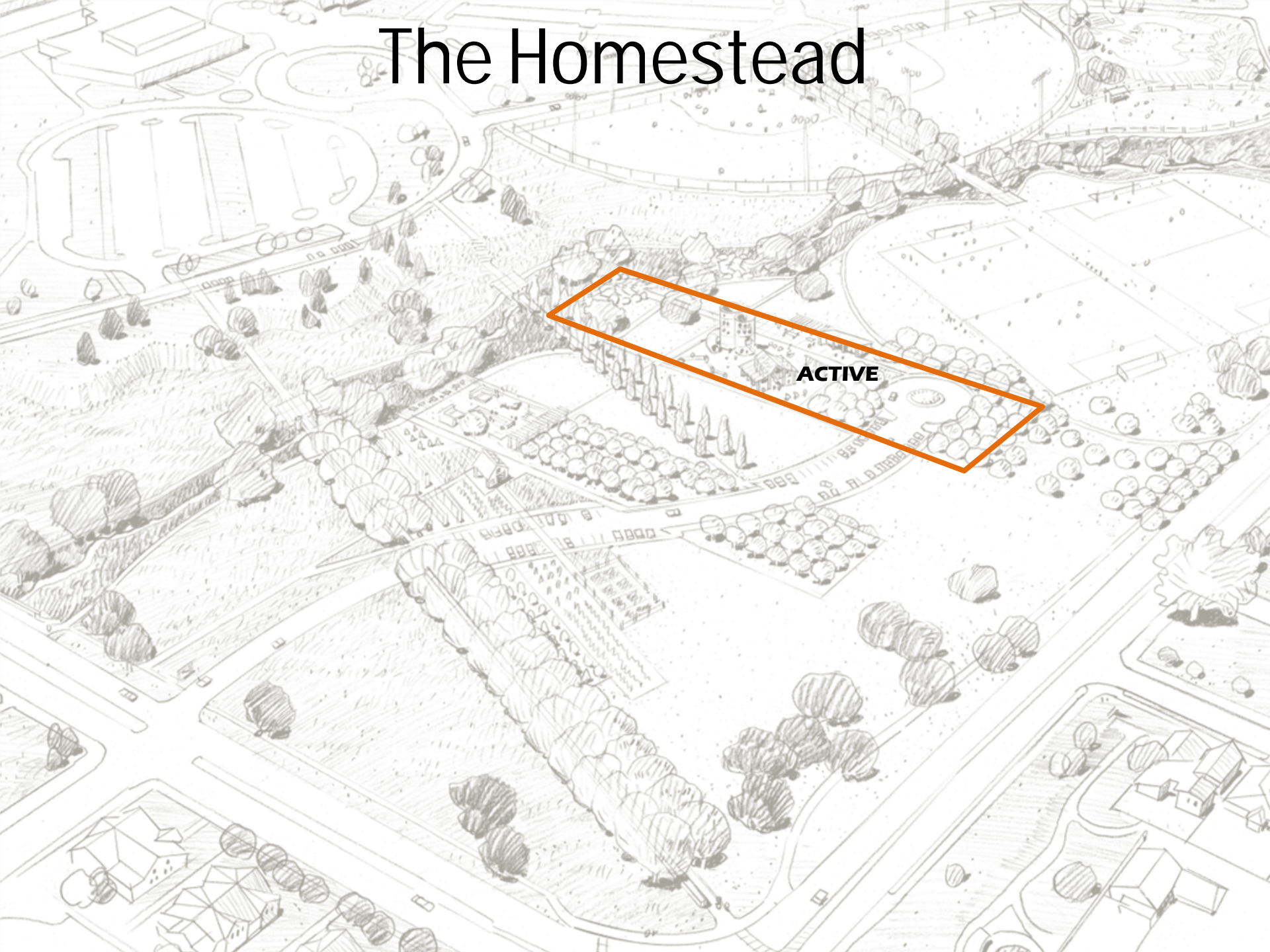
Homestead

Prairie Landscape

The Homestead

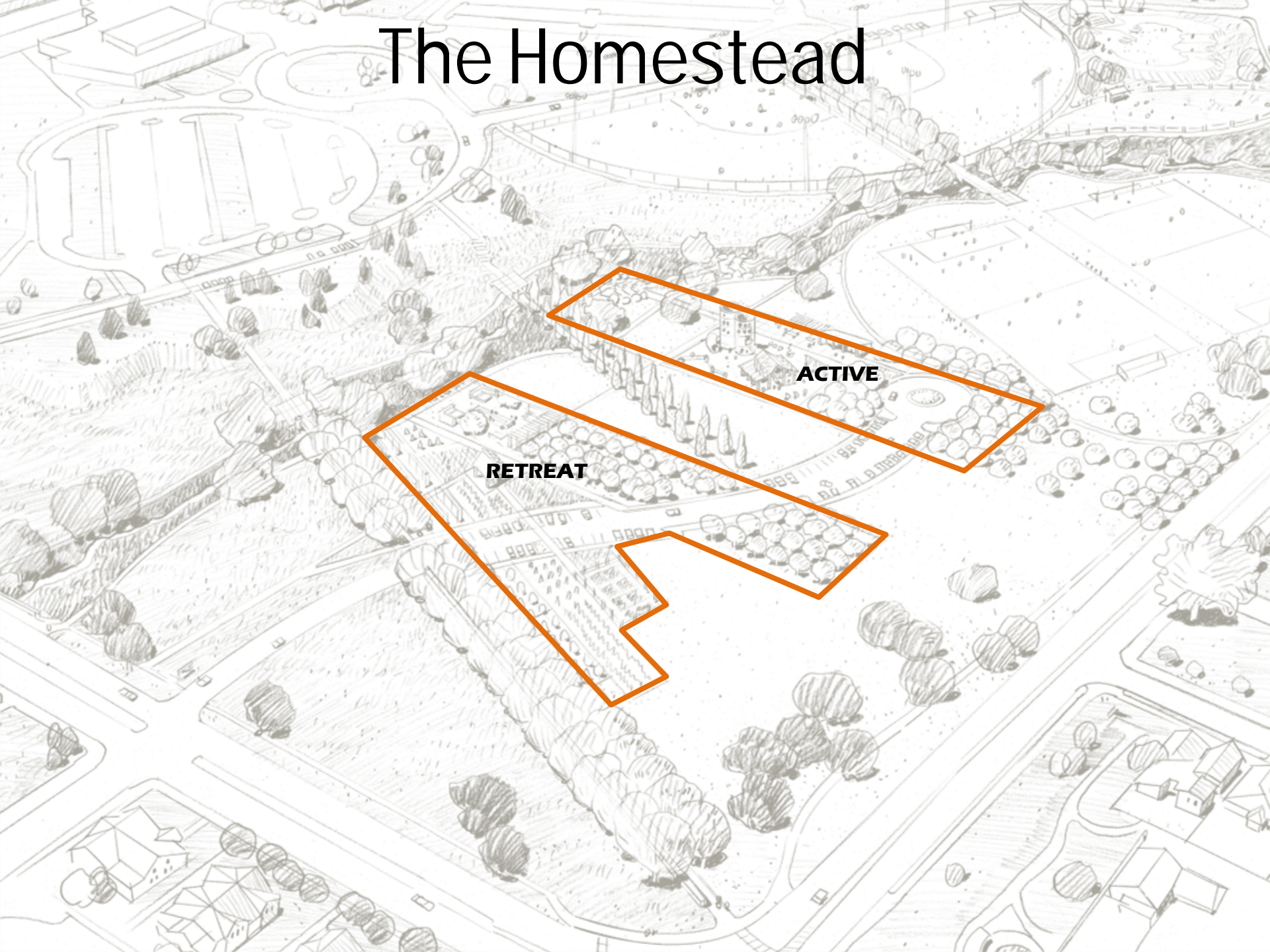


The Homestead



ACTIVE

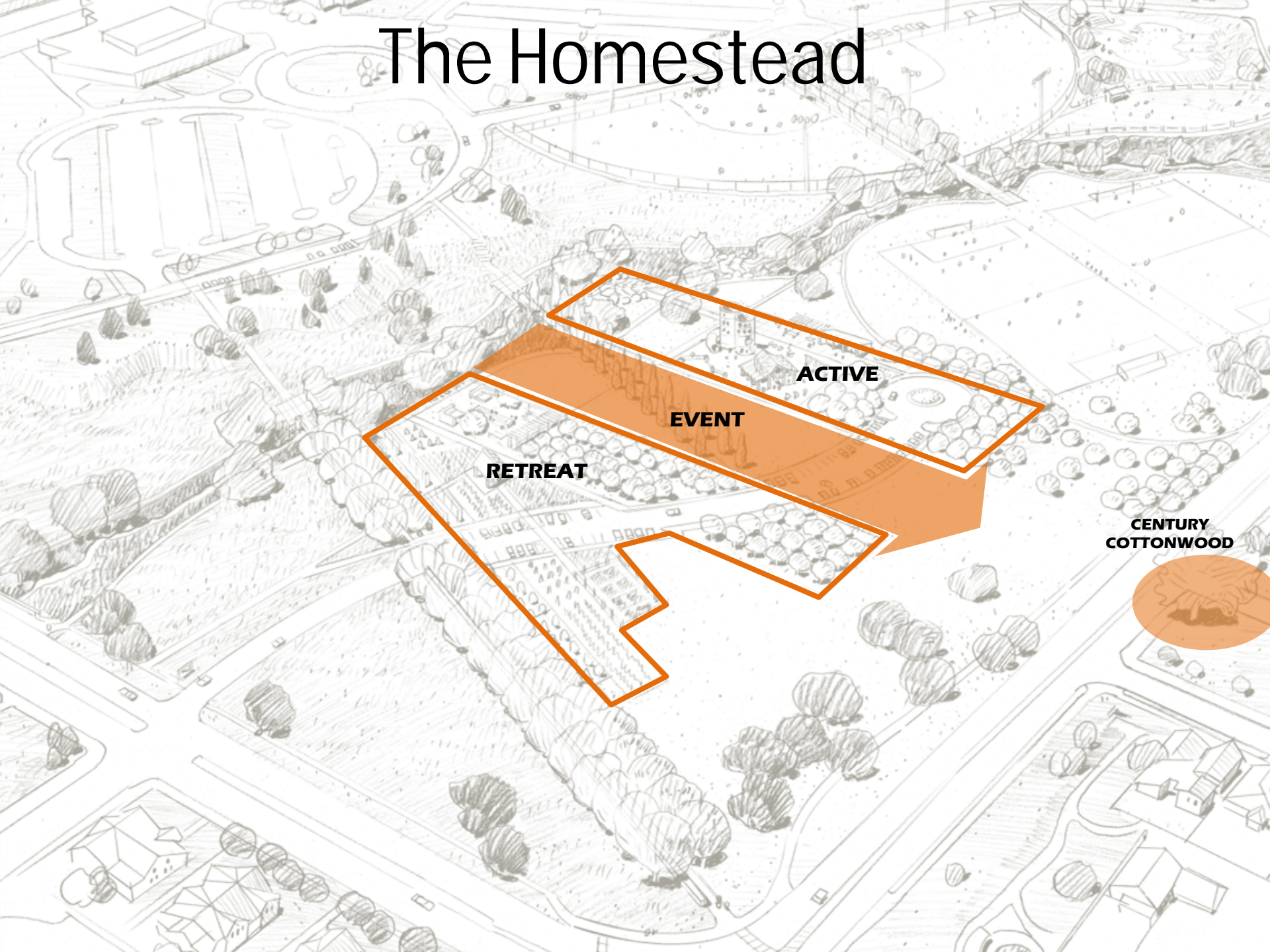
The Homestead



ACTIVE

RETREAT

The Homestead



ACTIVE

EVENT

RETREAT

**CENTURY
COTTONWOOD**





Playground

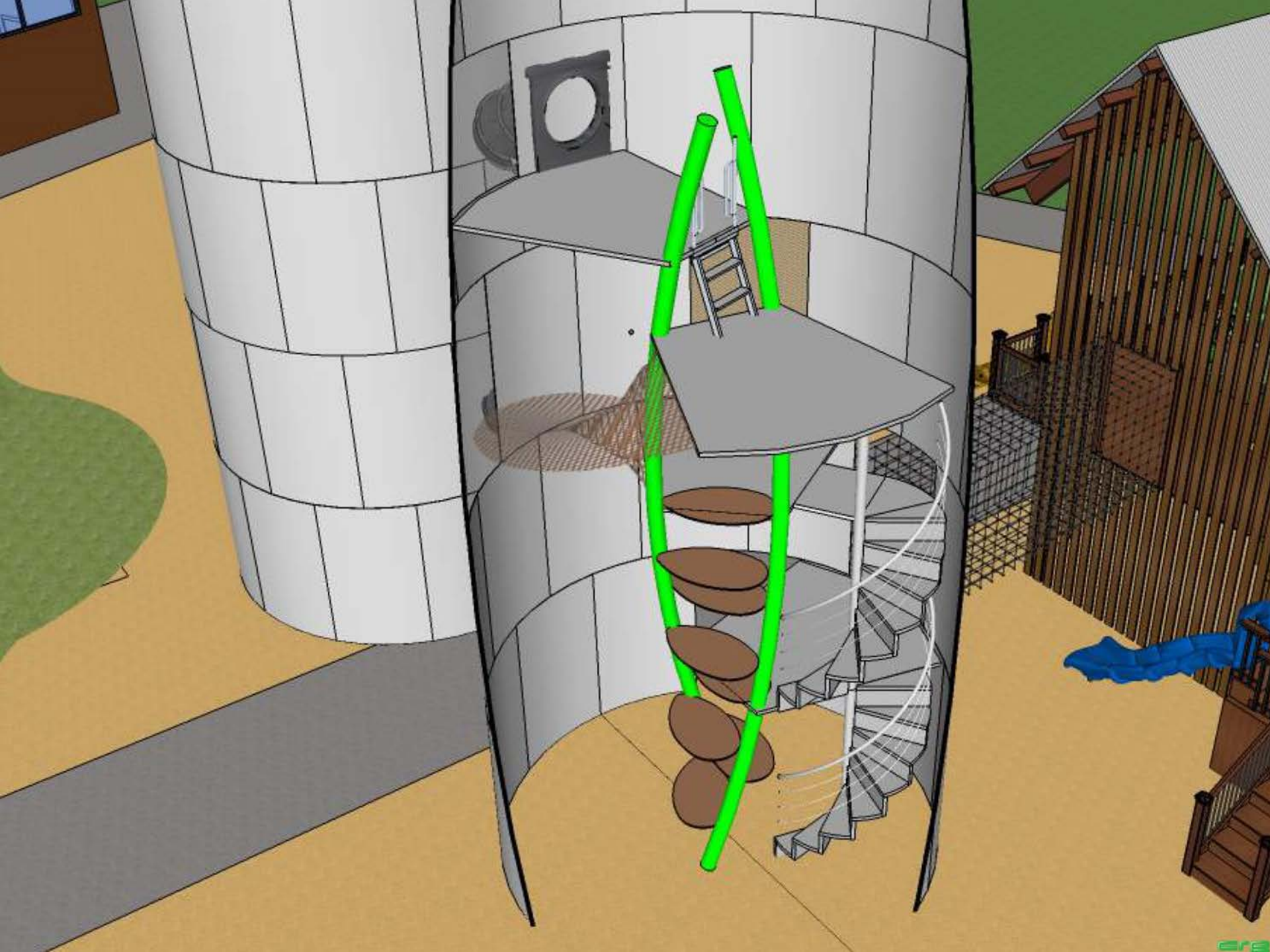
Silos Timberline & Prospect

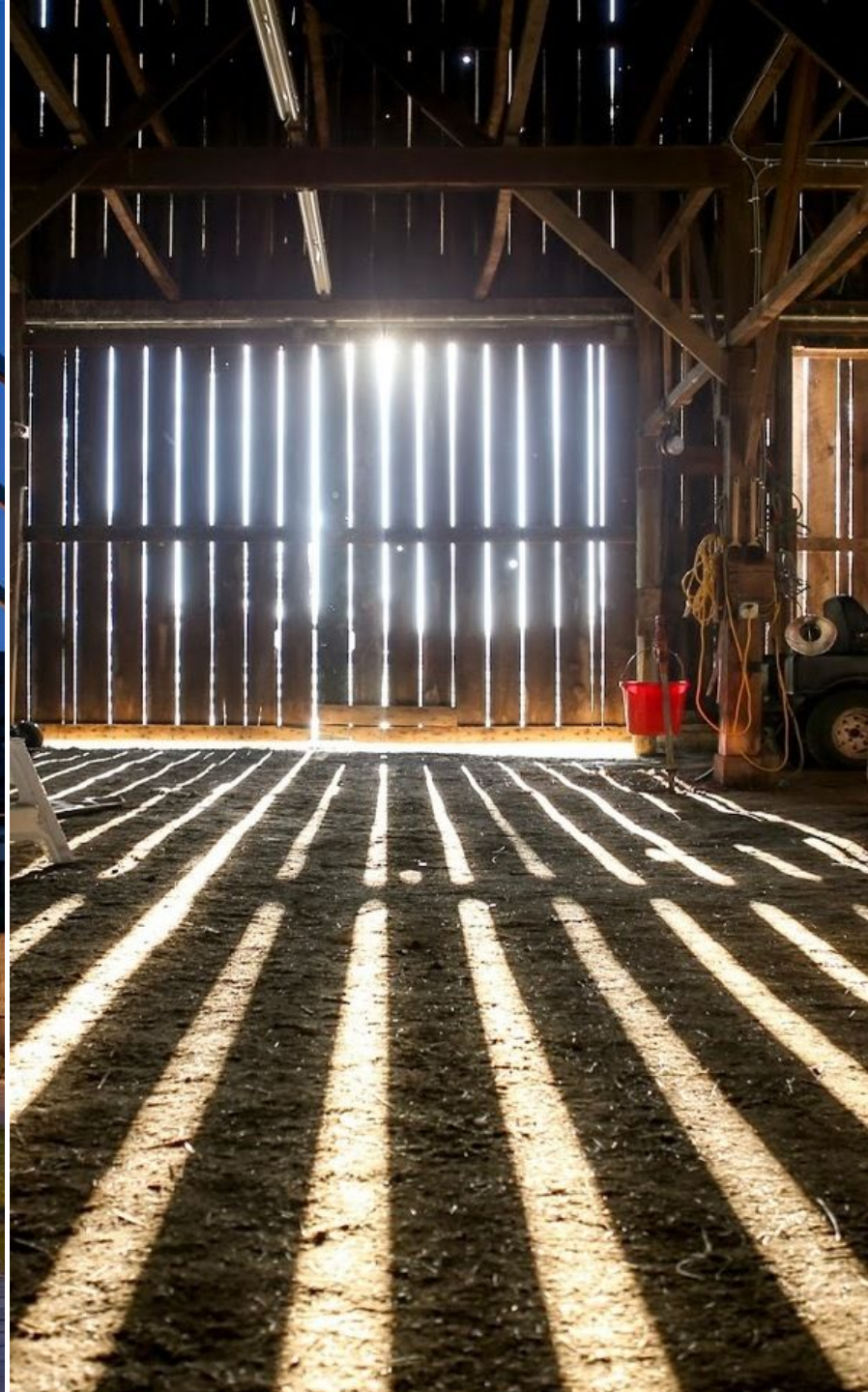




Playground

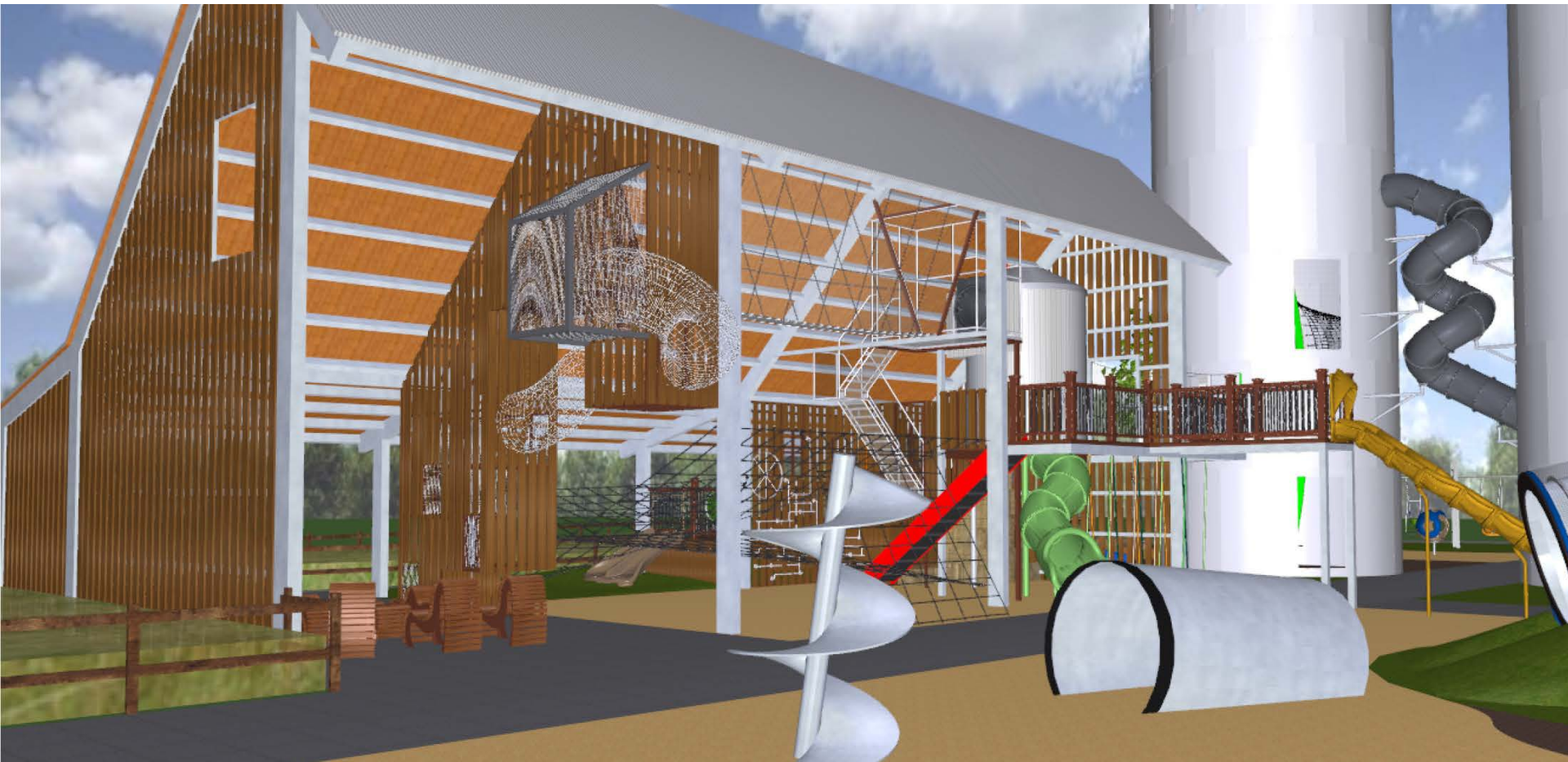








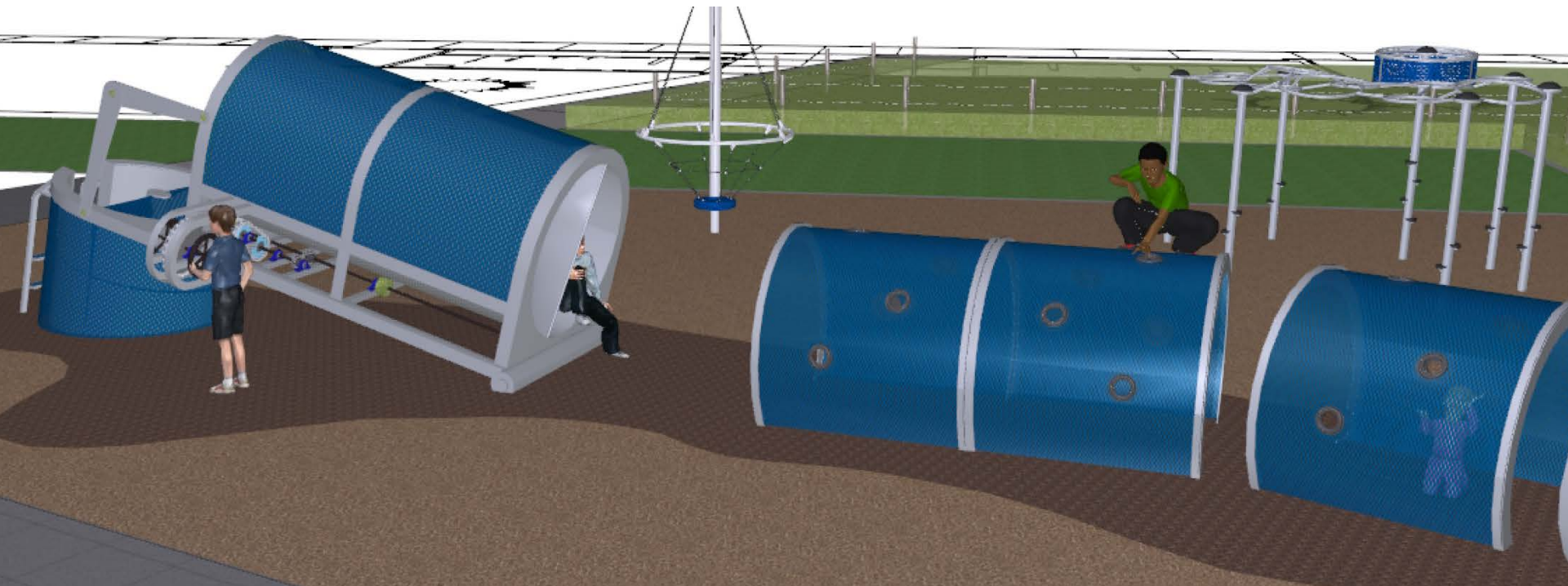
Playground



Playground



Playground

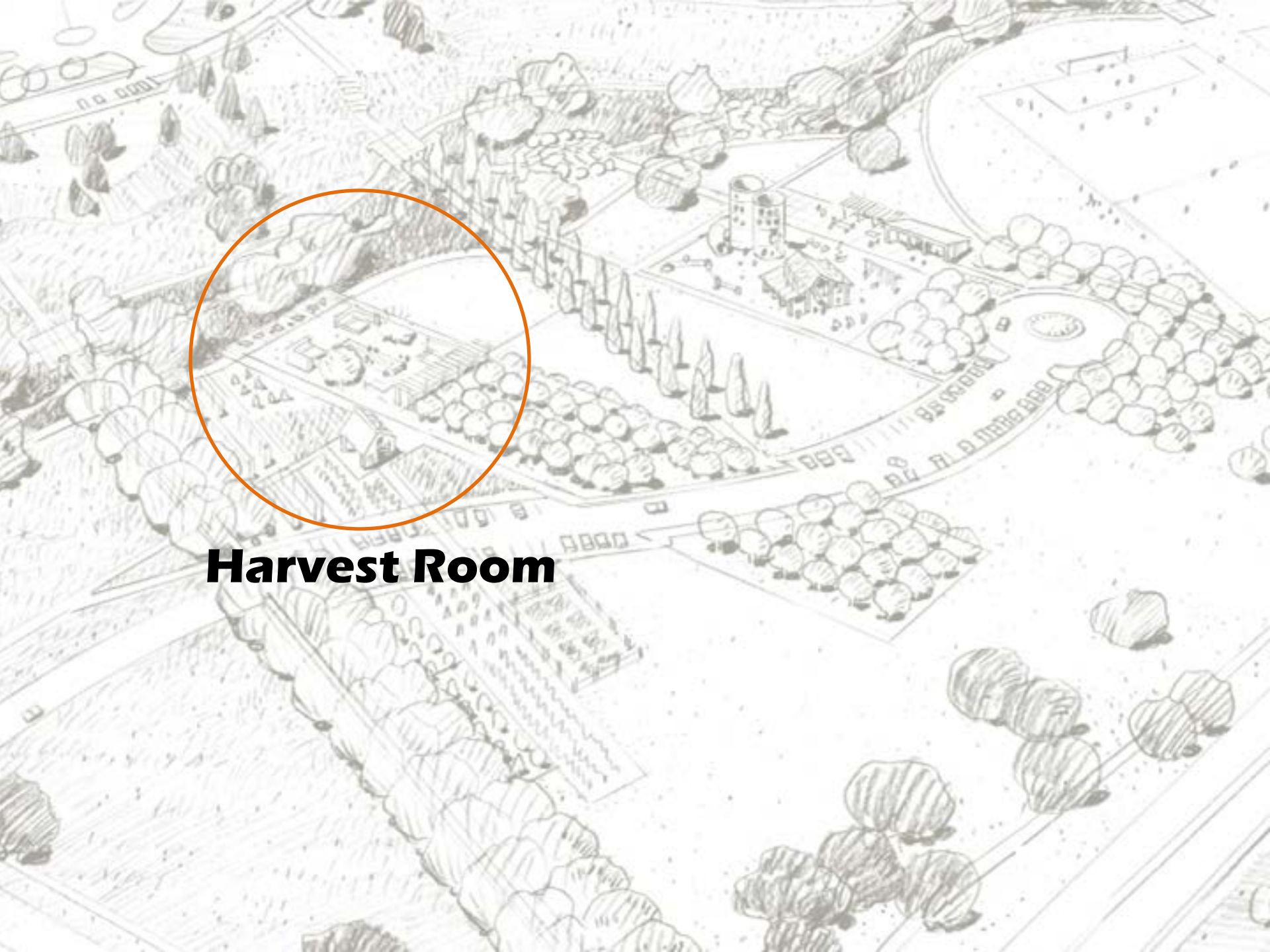




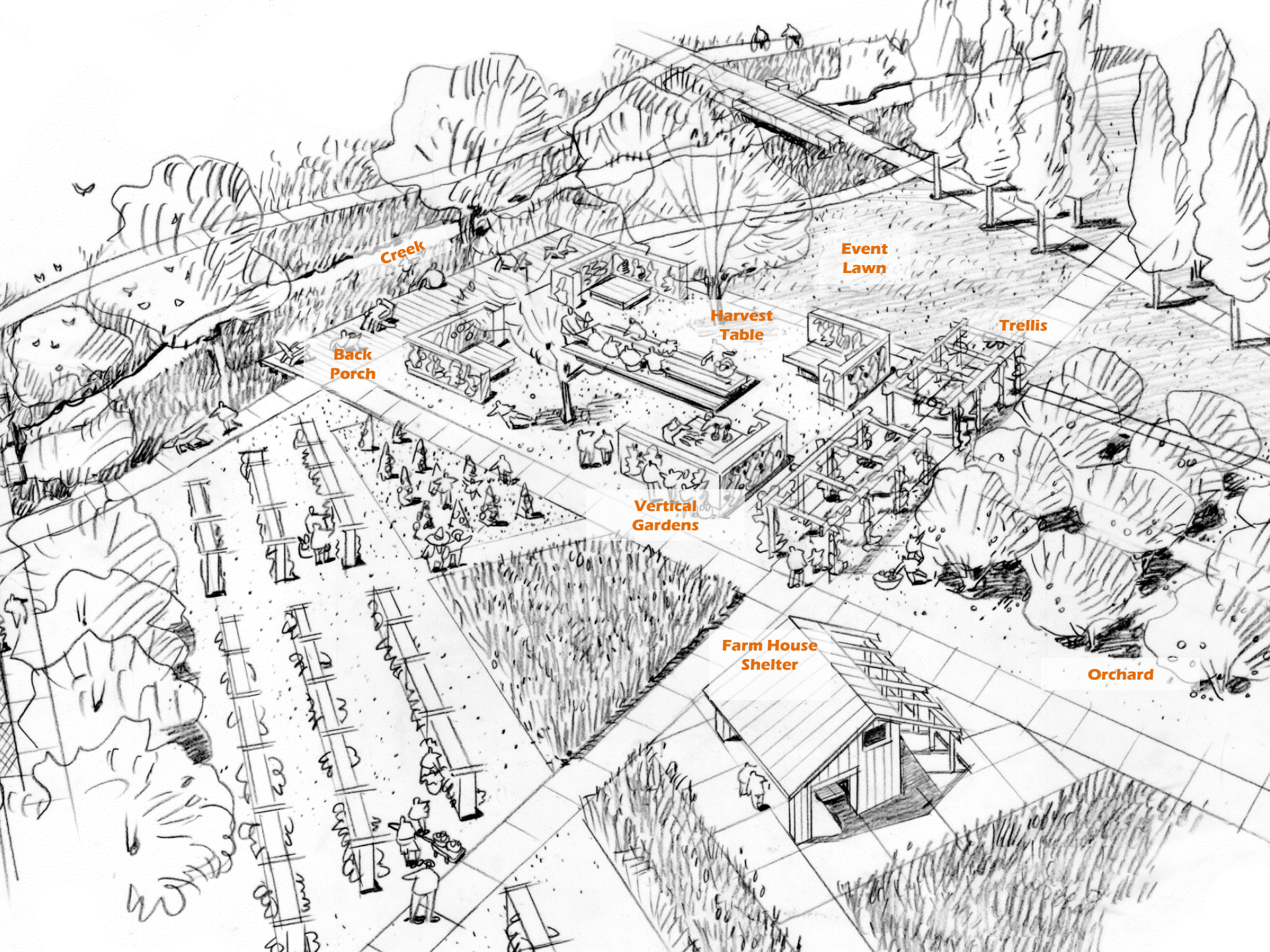
**Creek
Play**







Harvest Room



Creek

Back Porch

Harvest Table

Event Lawn

Trellis

Vertical Gardens

Farm House Shelter

Orchard

Farm House Shelter



Harvest Table



Vertical Gardens



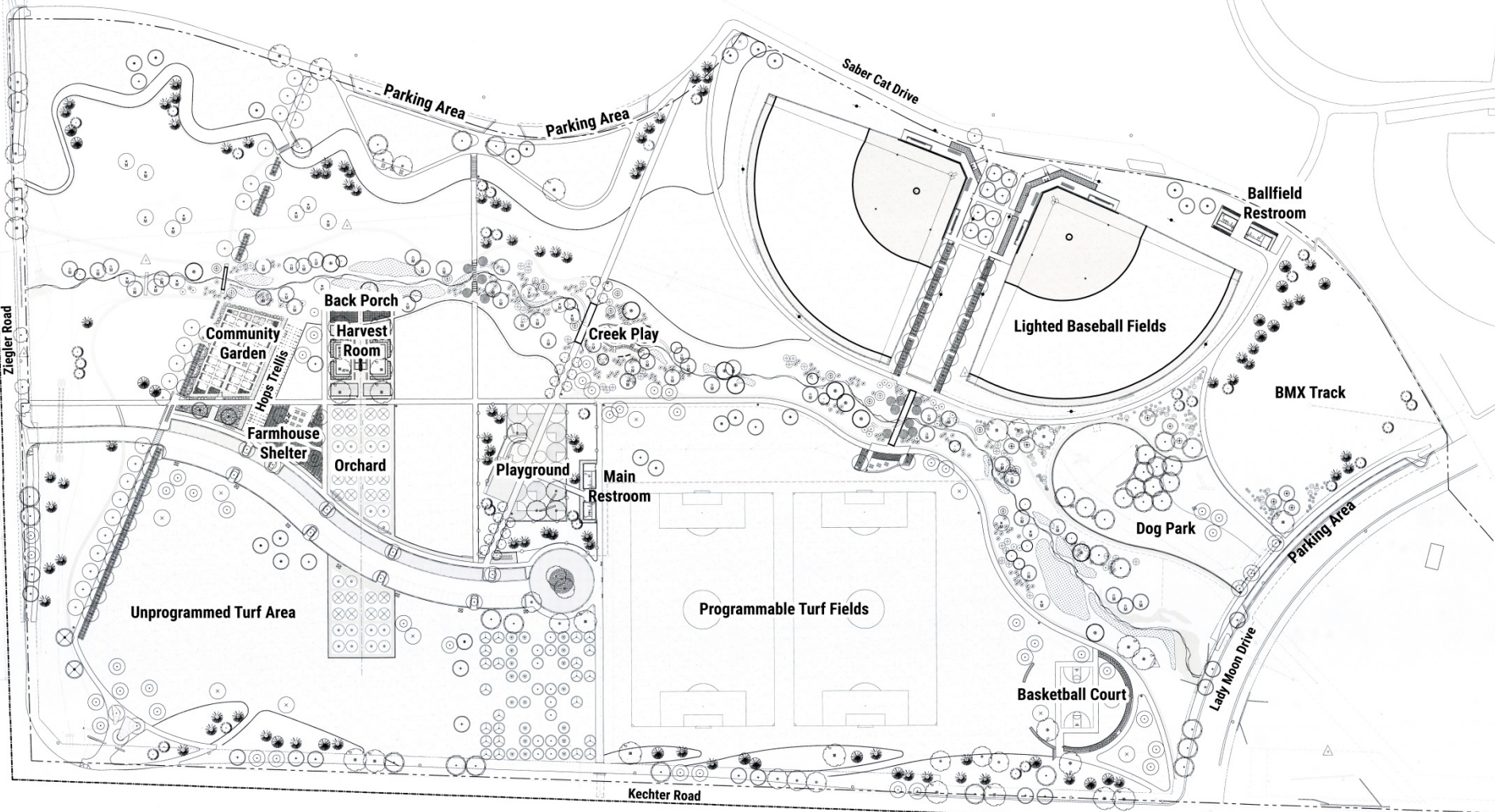


Neighborhood Concerns Addressed

- **Parking is distributed around the park**
- **Primary park entrance off Ziegler instead of Kechter**
- **Multi-purpose fields are not lighted, ball fields are lighted**
- **Playground is a safe distance from major roads**
- **BMX course is not in a prominent location**



Fossil Ridge High School



Southeast Community Park



Next Steps

- Bid Award
- Construction

Poudre River Downtown Project



Poudre River Downtown View from College Avenue



Poudre River Downtown

View from North Bank Looking South



trails



trails

- We develop the City's recreational trail system
- Funded from Conservation Trust (Lottery) revenue
- We typically add at least 1/2 mile of trail every year
- Multi-use 10-foot concrete trail, with gravel path, to serve equestrian, walkers, runners, bicycles,
- 36 miles of trail currently in Fort Collins
- Most popular recreation activity





Fossil Creek Trail Trilby & Lemay

- Trail connection between Fossil Creek Park and Power Trail
- Completed in Spring 2015









Poudre Trail Mulberry & Lemay

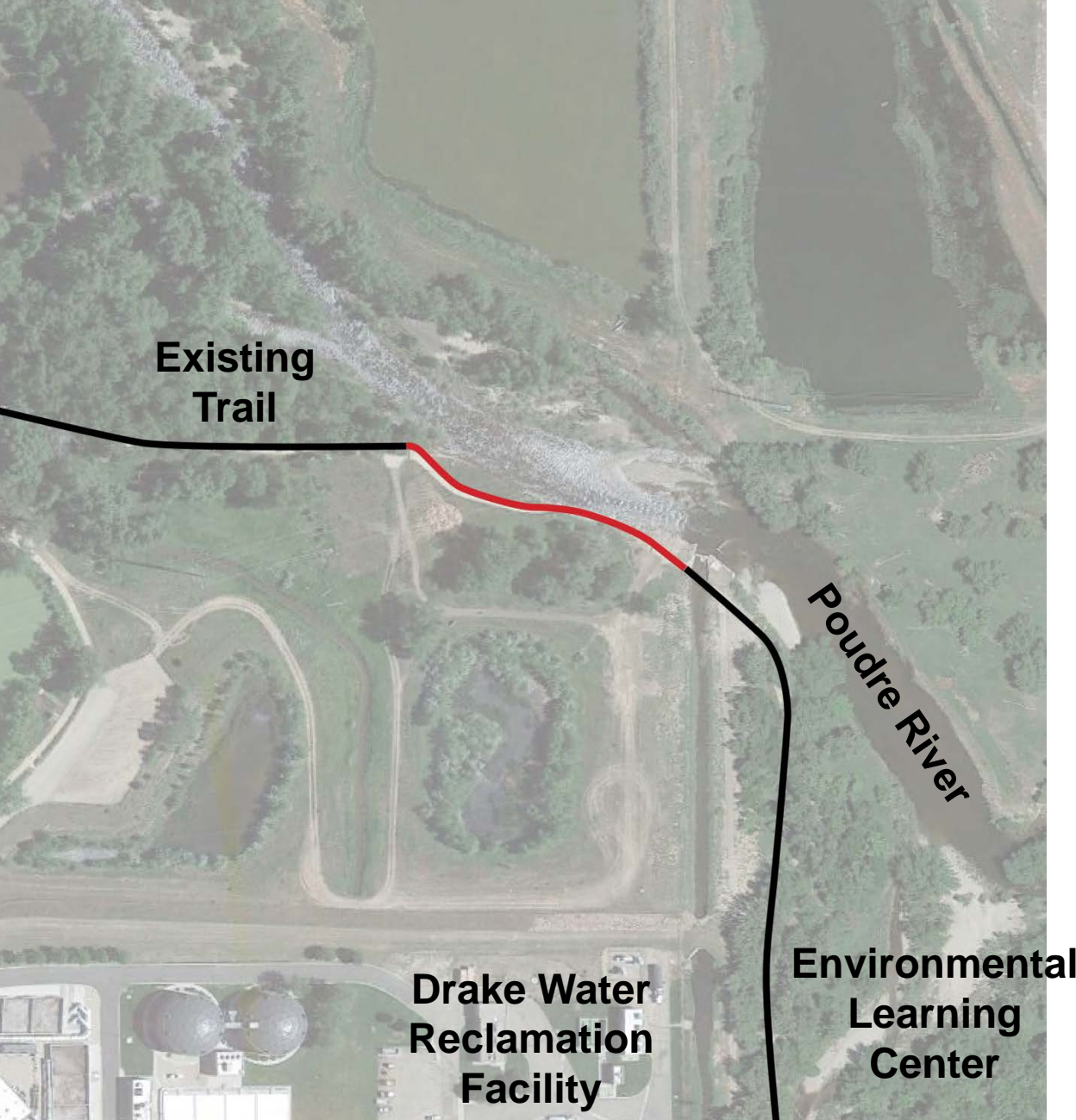
- Includes repurposed pedestrian bridge from Mulberry Bridge reconstruction
- Trail complete Summer 2015

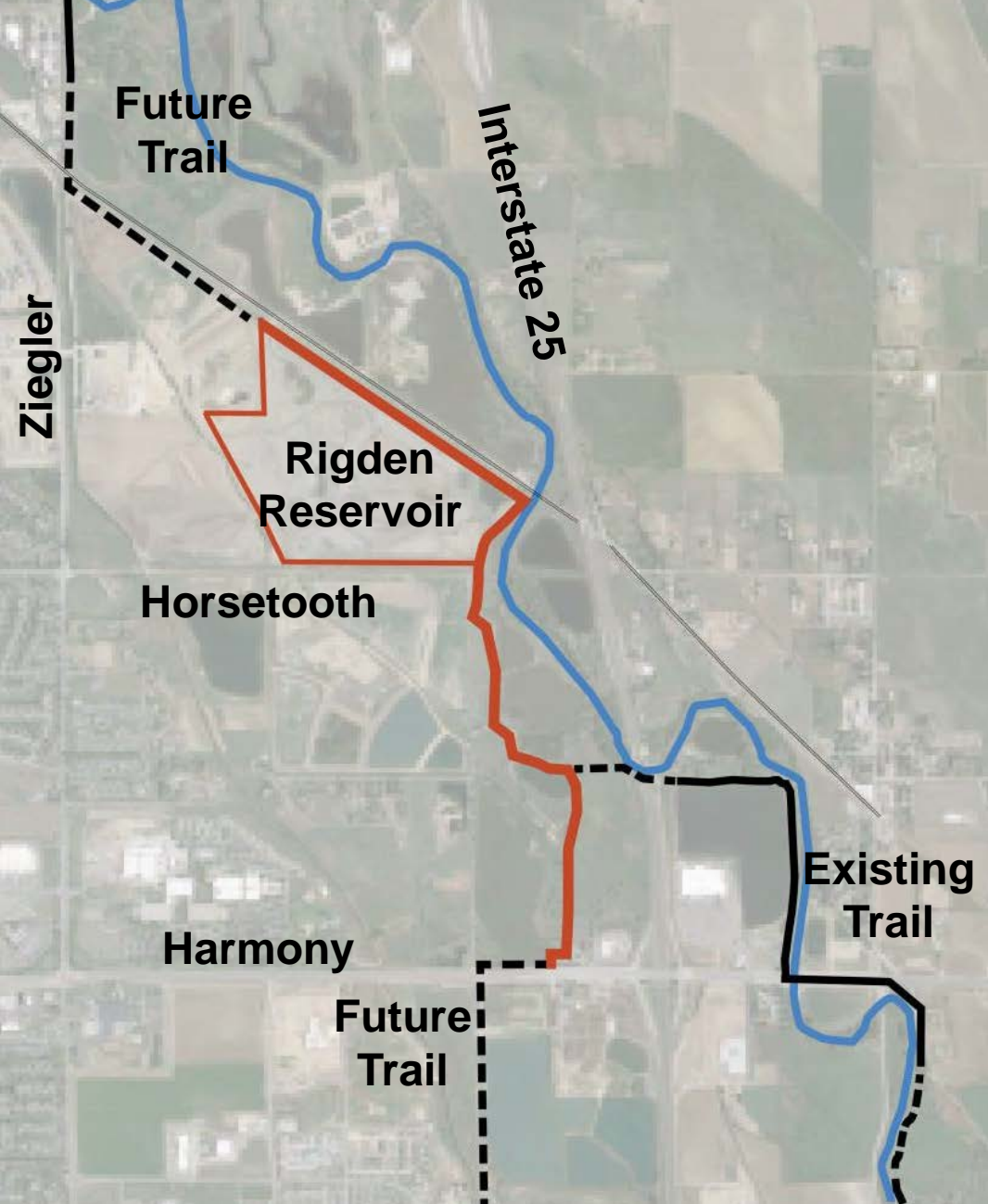




Poudre Trail Repair Environmental Learning Center

- Repair segment of trail damaged by flooding
- Project complete Summer 2015





Poudre Trail Arapahoe Bend Natural Area

- 2 miles of trail through Arapahoe Bend Natural Area
- \$1.2M total cost
- Awarded \$738k GOCO grant
- Complete Fall 2015



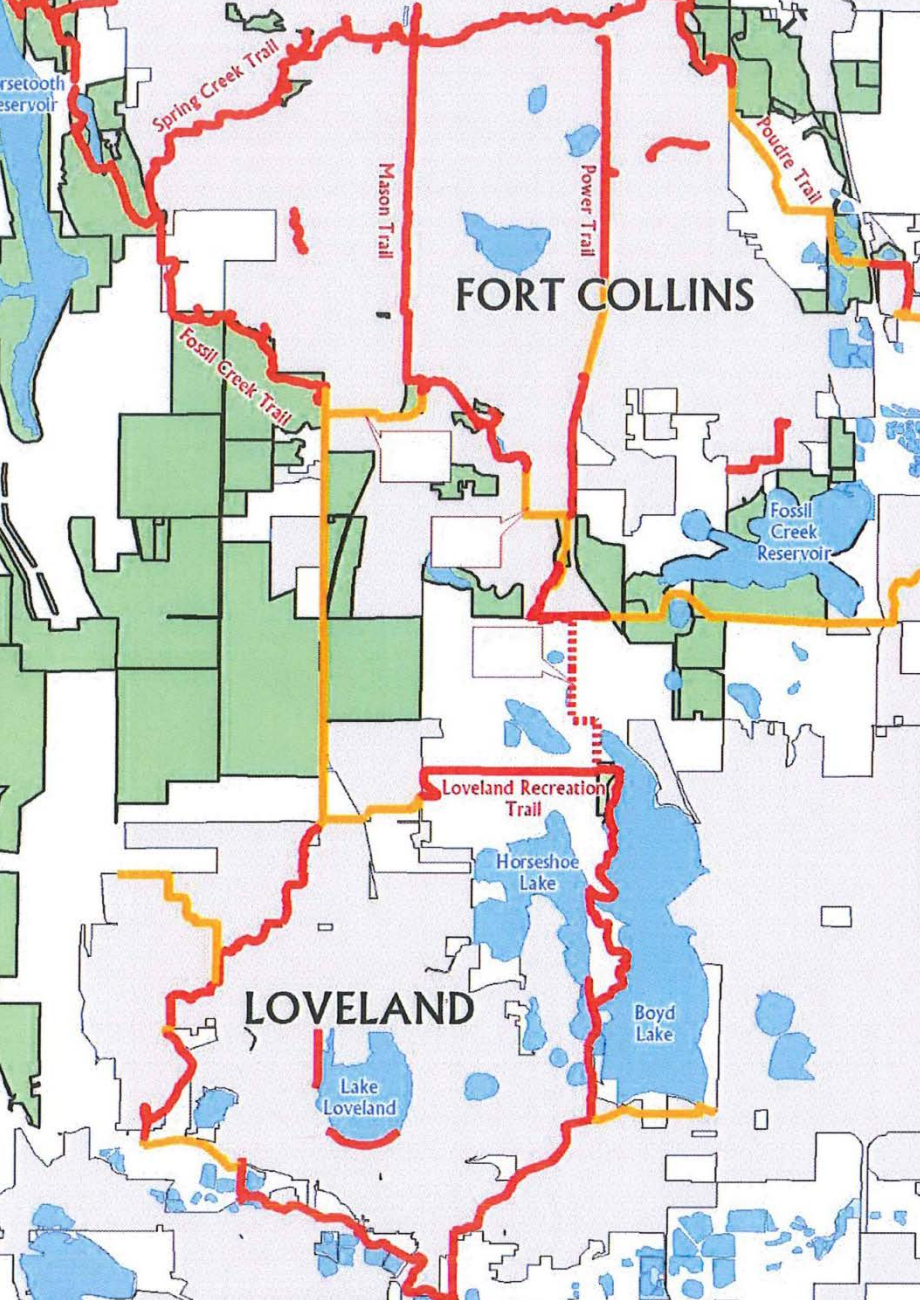






Fossil Creek Trail Shields to College

- Approximately \$4M project
- Awarded \$1M GOCO grant
- Construction of underpass in 2016



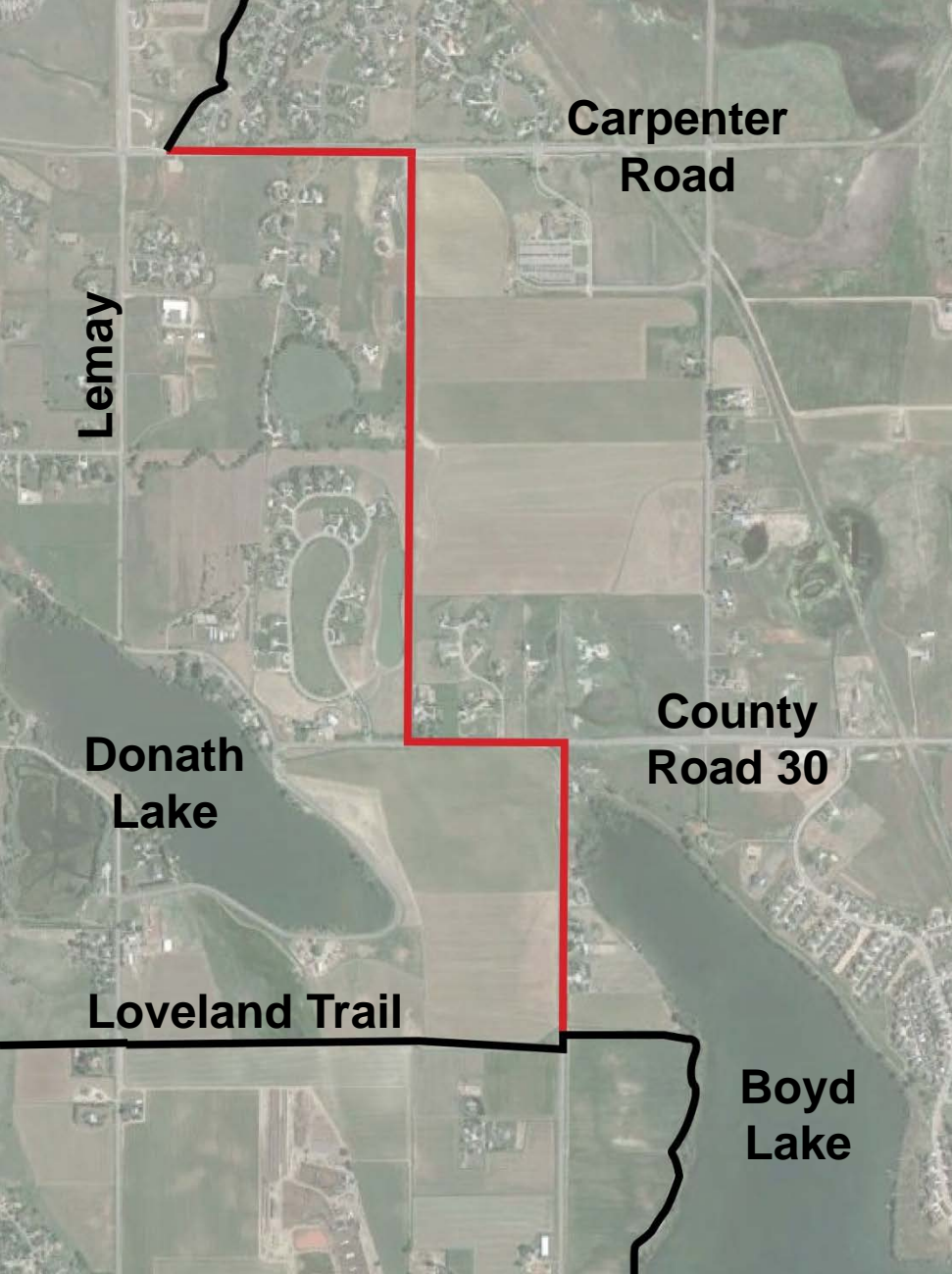
Fort Collins/Loveland Trail Connections

- Longview Trail
- Front Range Trail



Long View Trail

- 4 mile trail connection
- Partnership between Loveland, Larimer County and Fort Collins
- Approximately \$4M project
- Awarded \$1M CDOT TAP grant & \$1M GOCO grant
- Construction in 2016 or 2017



Colorado Front Range Trail

- Loveland to Fort Collins connection
- Partnership between Loveland, Larimer County and Fort Collins
- Awarded GOCO and TAP grants totaling \$800k
- Construction in 2016 or 2017

More Info:

fcgov.com/parkplanning

