

# Building Parks & Trails

park planning & development



# 866 acres

of developed park land



# 6 community parks



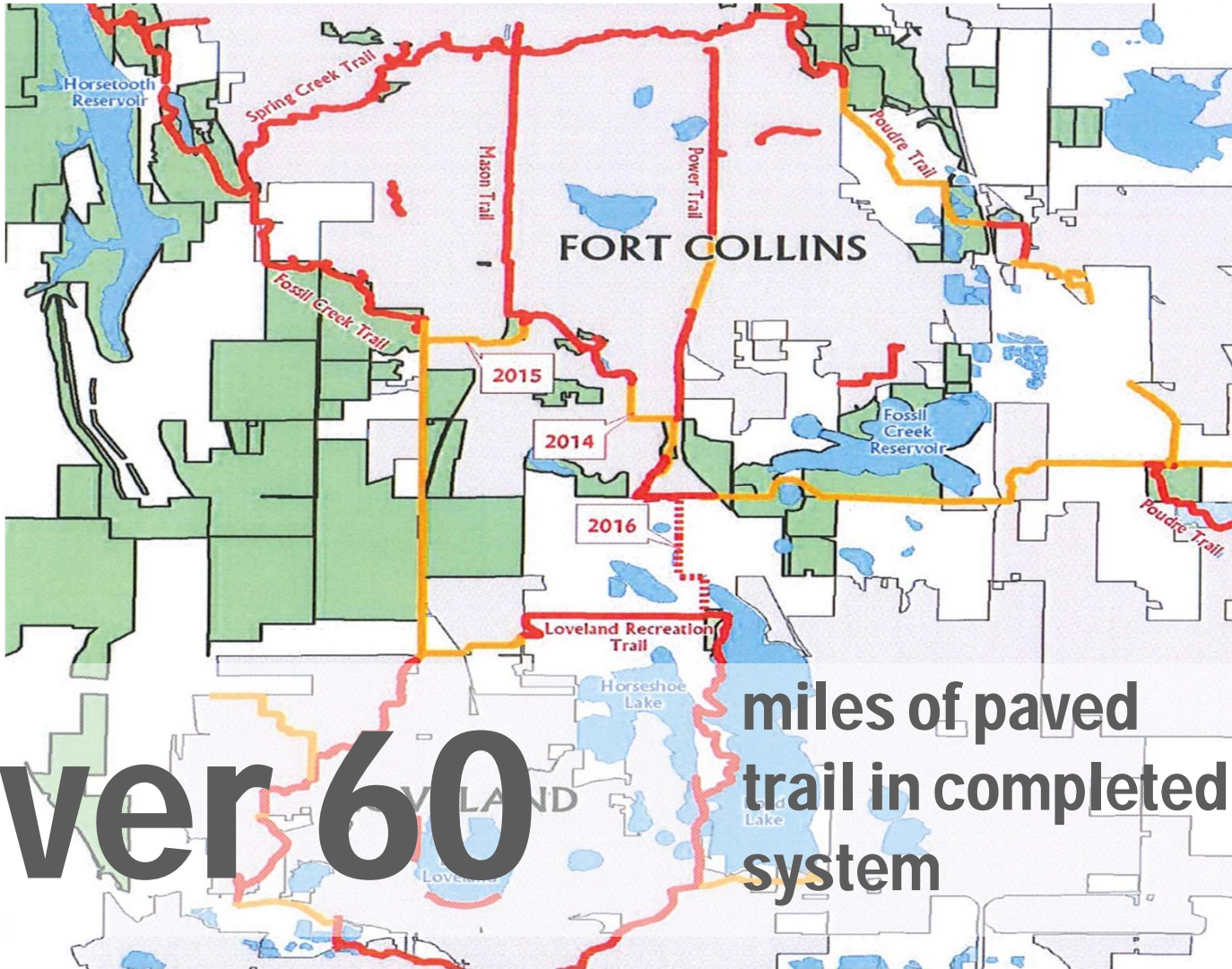


# 49 neighborhood

parks



**36 miles**  
of paved trails



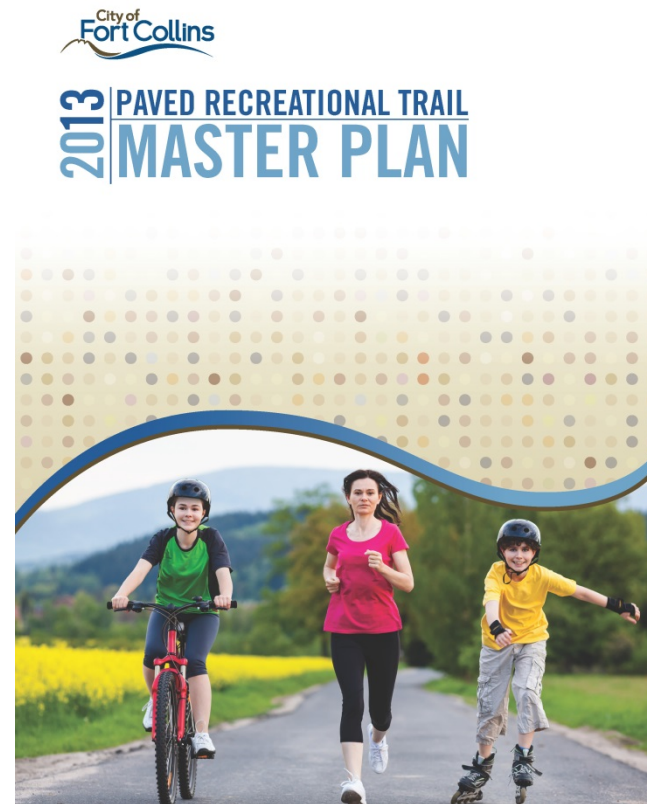
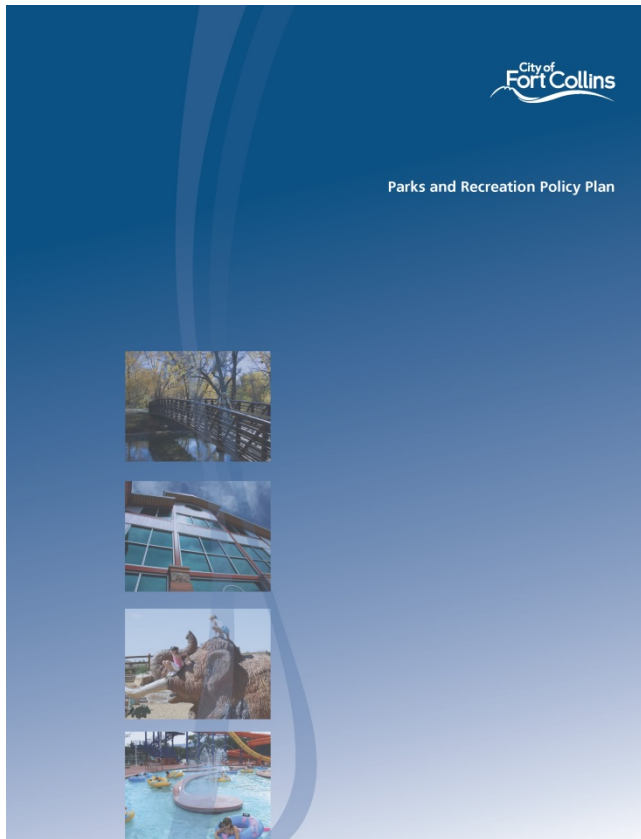
**over 60** miles of paved trail in completed system



**top 3** citizen survey – parks & trails

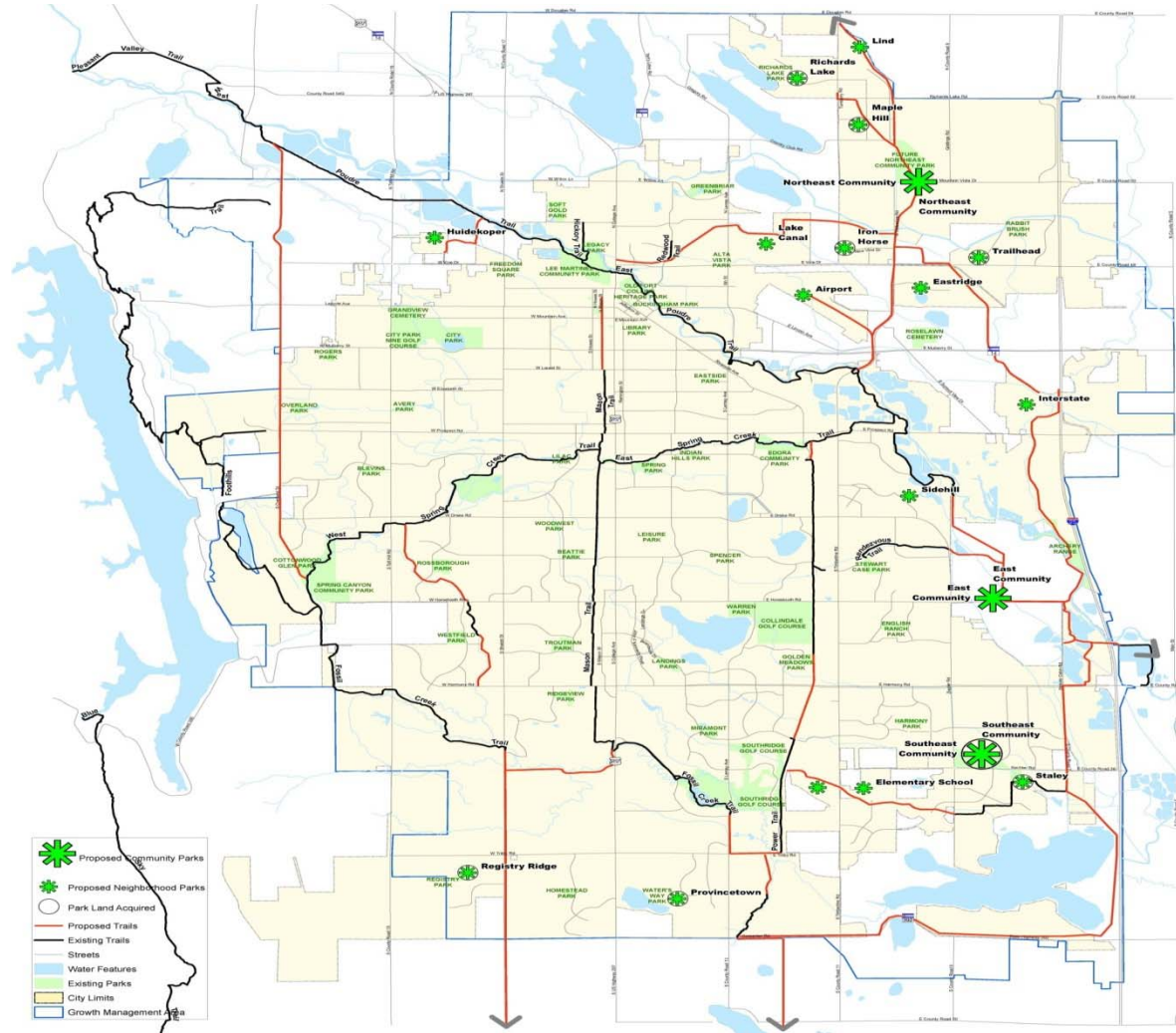


# Guiding Documents





# Future Parks & Trails



# Project Types



**New  
Community  
Parks**



**New  
Neighborhood  
Parks**



**Park  
Improvements**

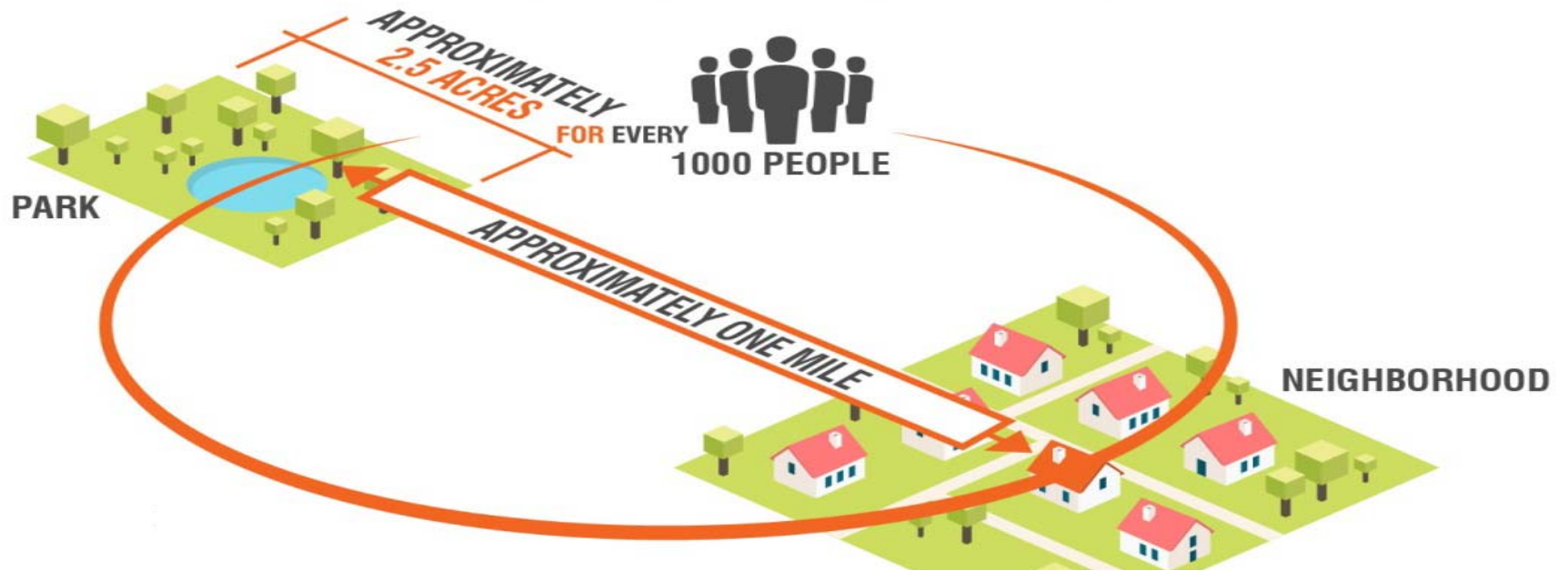


**New  
Trails**



**Special  
Projects**

# Process



**1**

**Determine park location and size**

**2** Purchase land & trail access

An illustration showing two black silhouettes of people shaking hands. A green arrow points from a green circle containing a white dollar sign towards the right. In the background, there are green trees and a winding path leading to a red 'T' marker.

**3** Collect fees as development occurs

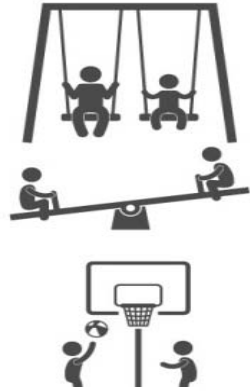
An illustration featuring a black bulldozer on the left. To its right, two black silhouettes of people wearing hard hats are looking at a set of plans. A green circle with a white dollar sign is positioned between them.

**4** Determine water needs and source

An illustration of a blue hand-operated water pump. A bucket is attached to the spout, and water is being dispensed into it. The pump is situated on a patch of blue stones.

**5** Begin design after development is 75% complete

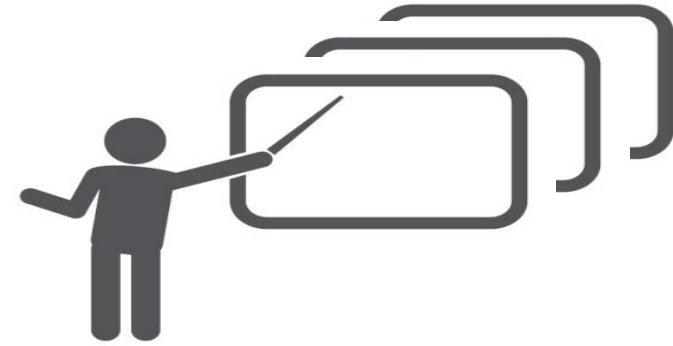
An illustration of a brown pie chart with one slice removed, representing 75% completion.



**6** Identify needs



**8** Neighborhood comment



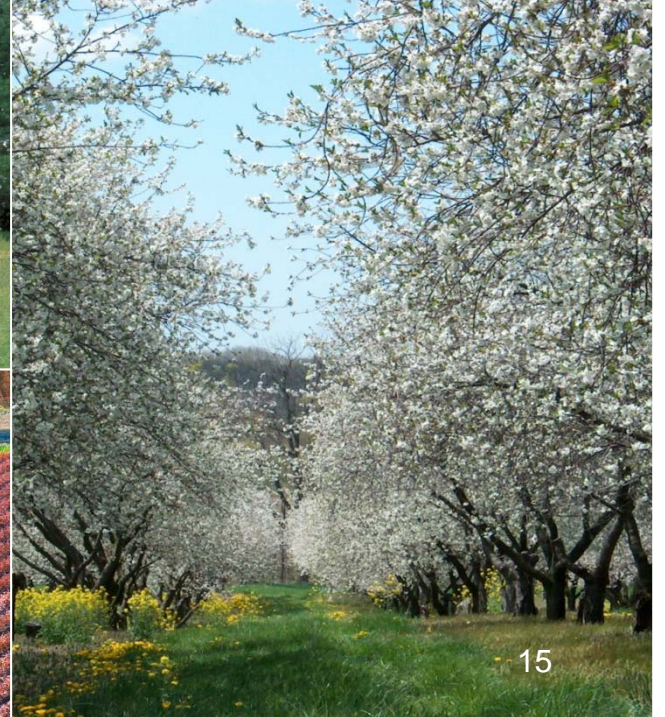
**7** Develop alternatives



**9** Prepare final plans & construct park

# Twin Silo Park









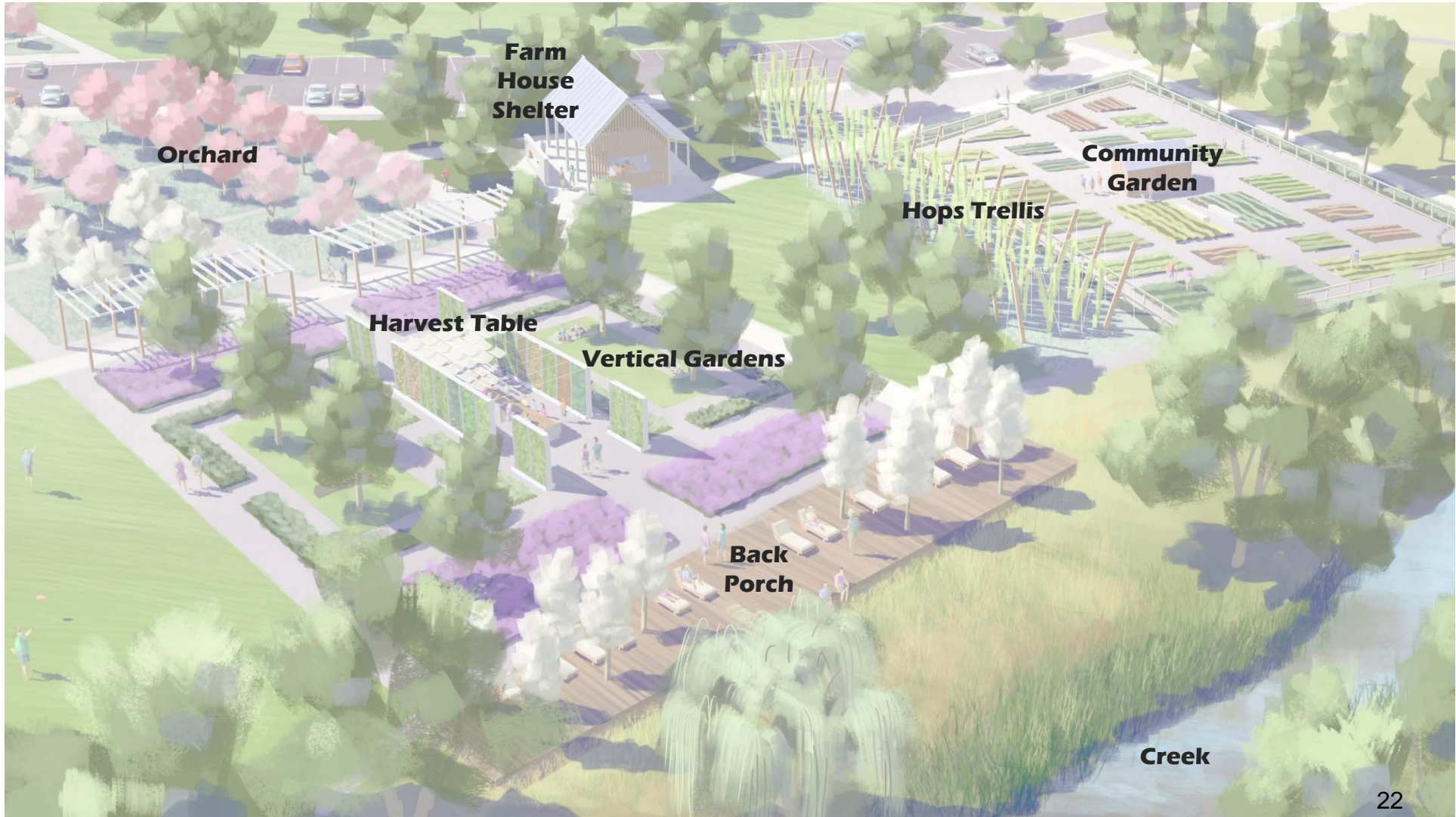












**Farm House Shelter**

**Orchard**

**Community Garden**

**Hops Trellis**

**Harvest Table**

**Vertical Gardens**

**Back Porch**

**Creek**























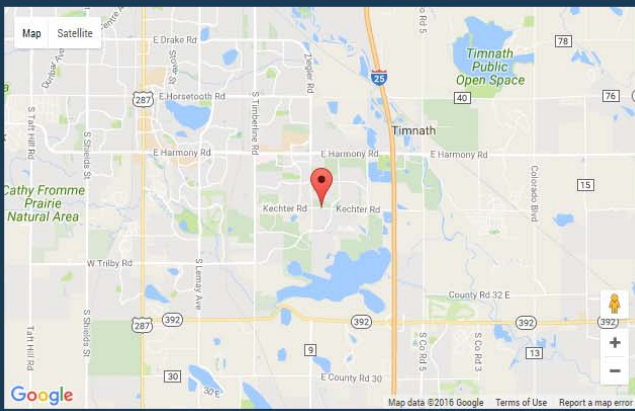






Southeast Community Park  
Camera: Ketcher Camera

Zoom: 100%



**Project Description**

54 Acre Community Park that is being constructed in the southeast part of Fort Collins at the corner of Ziegler and Kechter Roads.

**Camera Description**

Camera located mid point along Kechter Rd. adjacent to the park property



2016/10/18 15:30 Previous Next Select Date View Timelapse  Show Latest  Full Screen

Weather: Partly Cloudy Temperature: 62° F Wind: 131° at 4 mph  
Sunrise: 07:15:58 Pressure: 29.83" Hg Cloud cover: 25%



# HOW DO YOU PLAN TO USE THE PARK?

## 12% Active recreation

Sports, Horseshoe Pits,  
Volleyball, Basketball

## 14% Walking & running

Loop trails, Pathways,  
Trail connections

## 17% Gathering space for families

Neighborhood  
events

## 20% To recreate with kids

Playground/Play  
environment

9% for passive recreation and  
as a retreat space

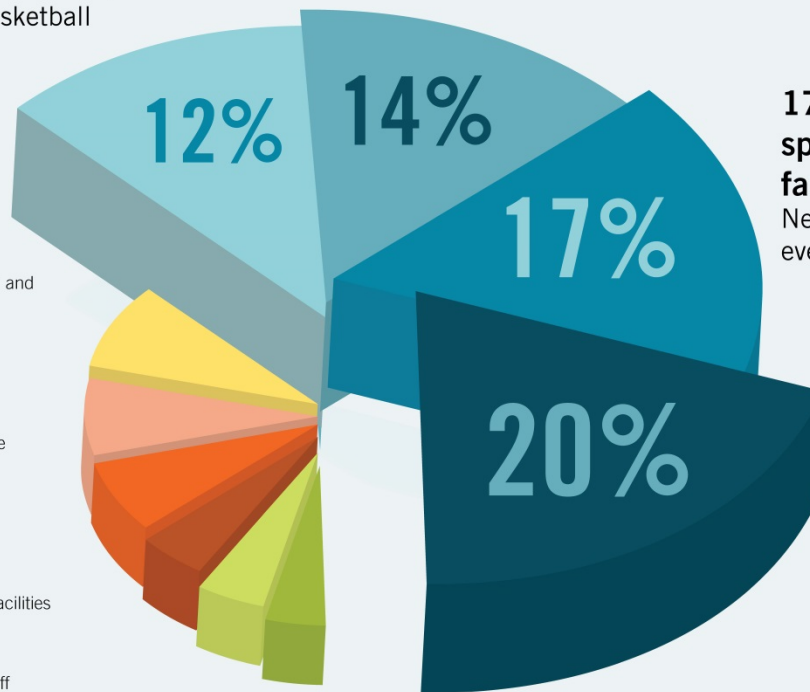
8% to exercise

7% to utilize the multi use  
green/open space

5% for dog walking trails

5% to use the restroom facilities  
and water fountain

4% to use the dog park off  
leash area



# CONCERNS

**6% safety at playground and park**  
Pets at playground

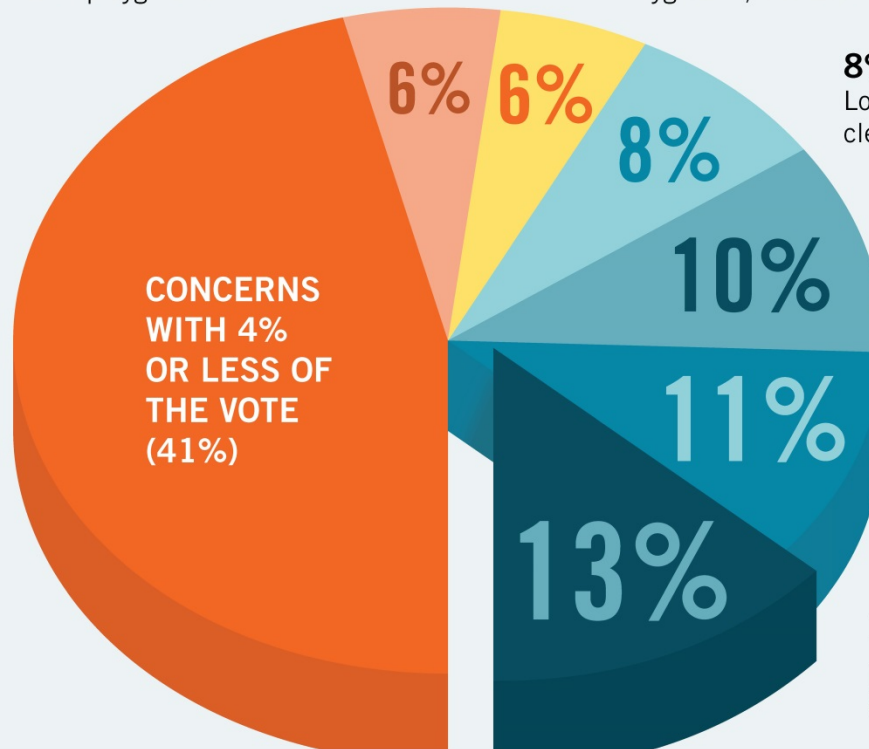
**6% Noise from park activities**  
Playground, basketball and dogs

**8% Park used as a dog park**  
Loss of park space, dog waste cleanup and safety

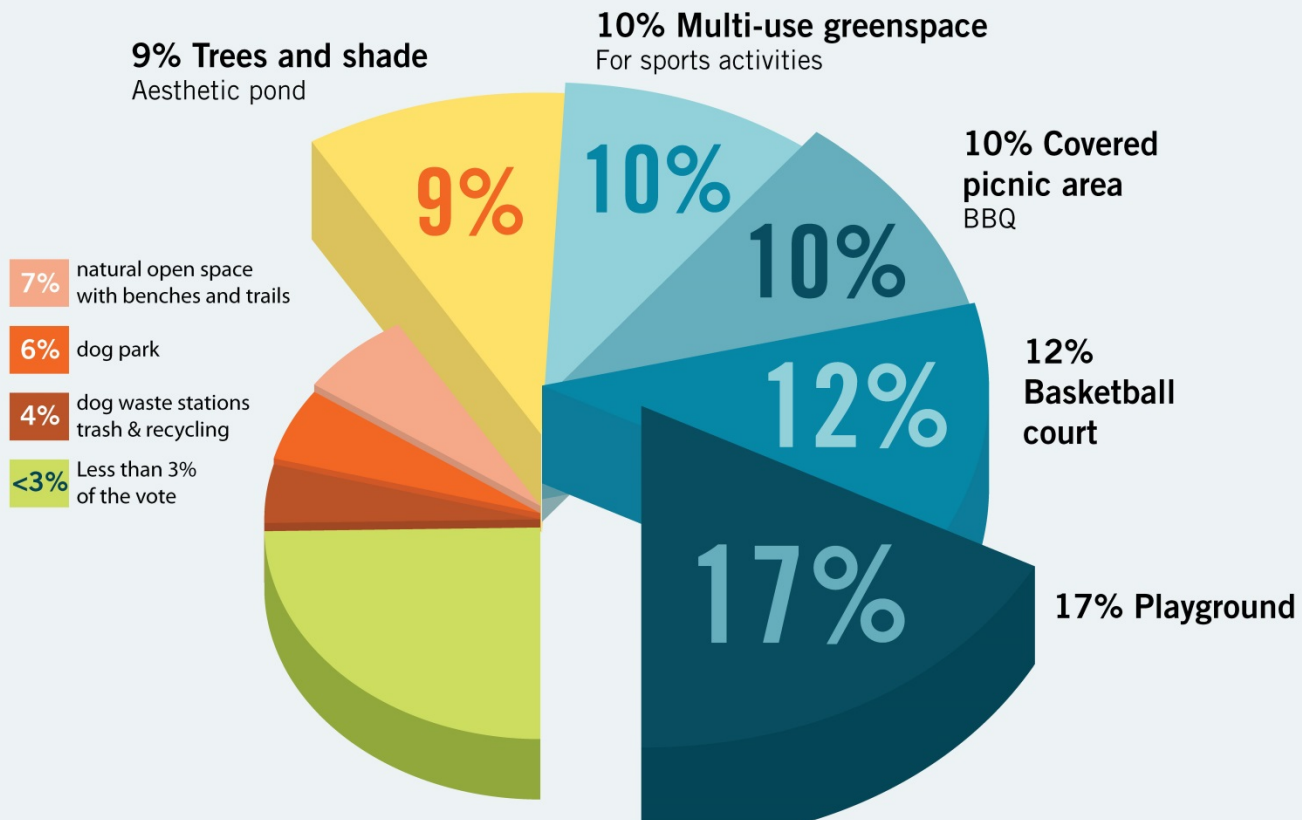
**10% Unwanted guest**  
in the neighborhood and at the HOA pool

**11% Park Maintenance**  
And cost

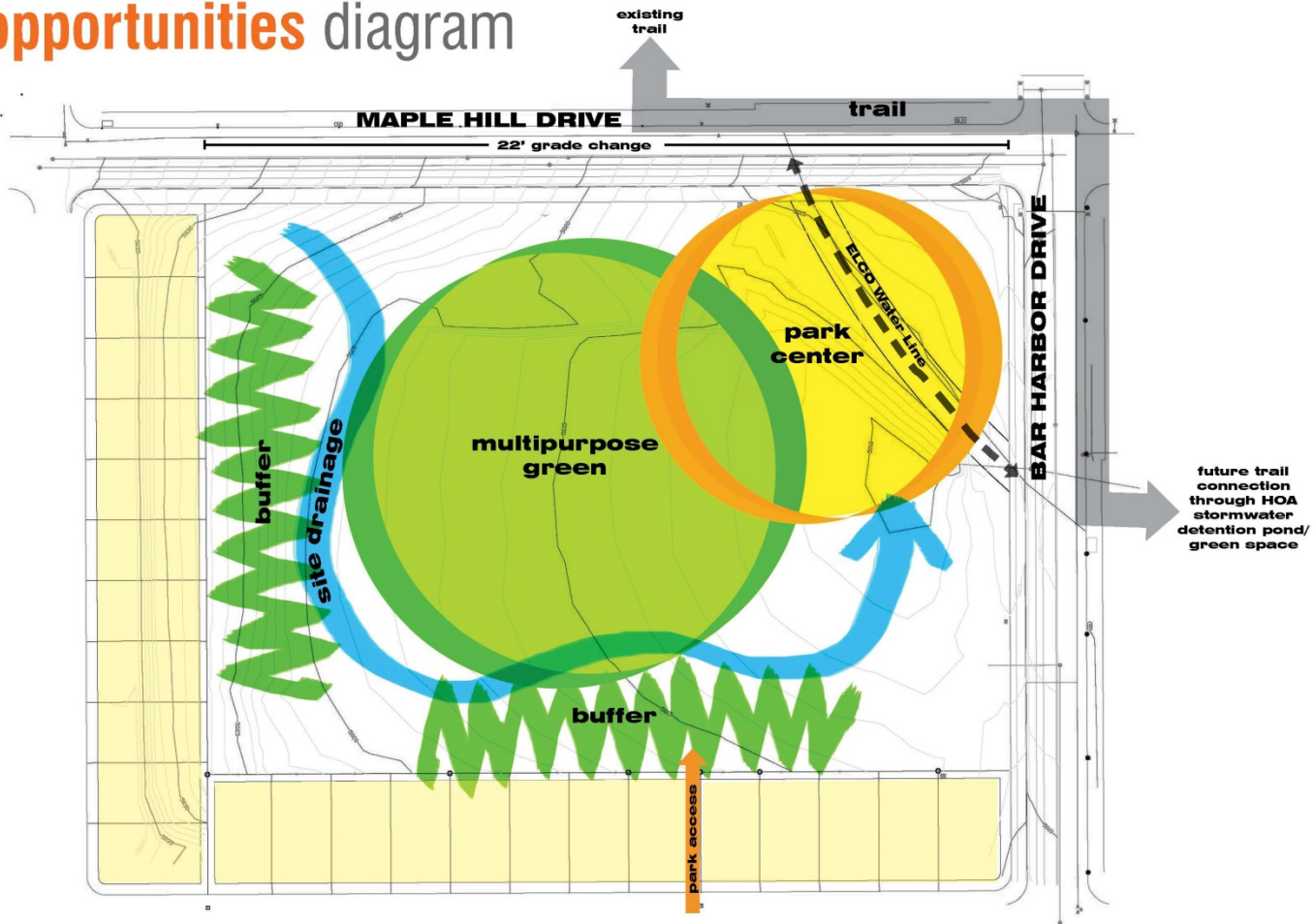
**13% Traffic and parking on Maple Hill**  
Kids safety



# TOP PRIORITY ITEMS



# opportunities diagram

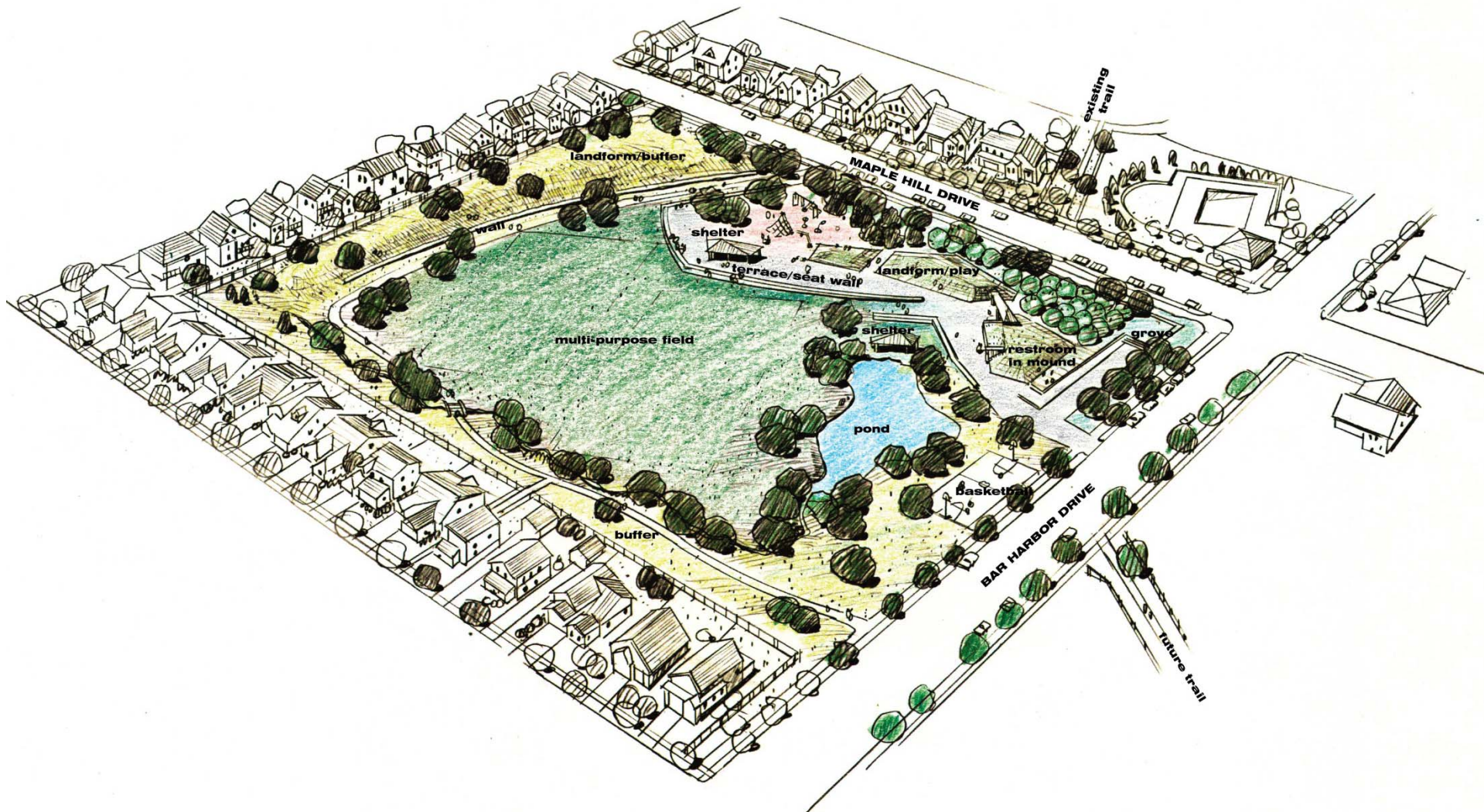


## park program



- loop pathways
- irrigation pond
- restroom and drinking fountain
- picnic shelter and gathering space
- neighborhood playground
- basketball court
- open green/multi-use turf area
- trail connections
- informal seating areas





landform/buffer

MAPLE HILL DRIVE

existing trail

shelter

terrace/seat wall

landform/play

multi-purpose field

shelter

restroom in mound

grove

pond

basketball

buffer

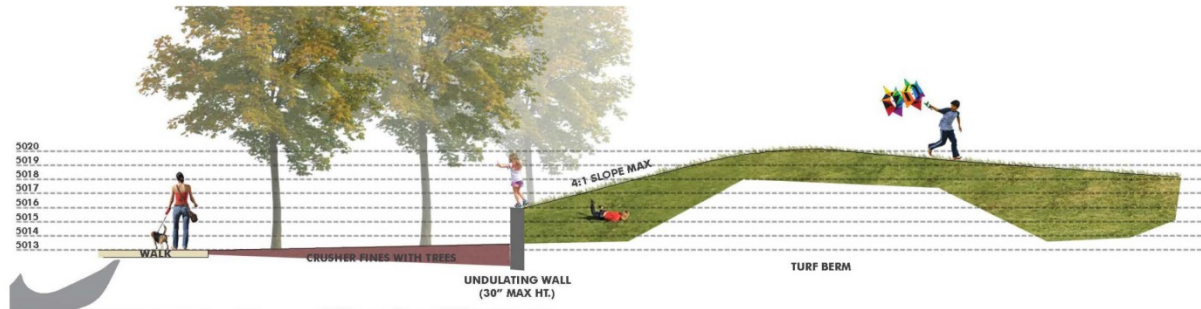
BAR HARBOR DRIVE

future trail

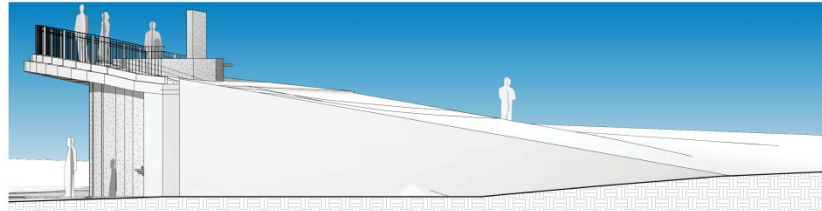
# updated site plan



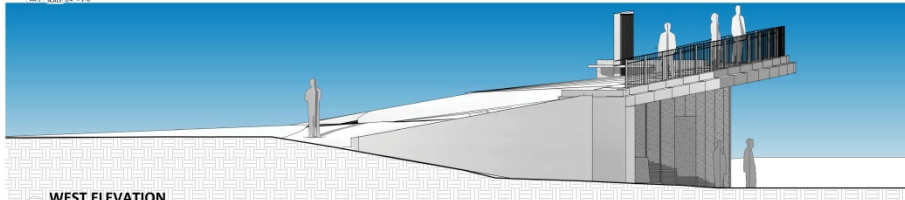
# core area enlargement



# architectural elevations-restroom



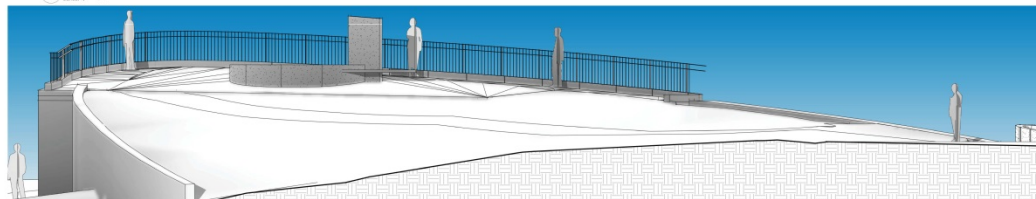
**EAST ELEVATION**



**WEST ELEVATION**



**SOUTH ELEVATION**

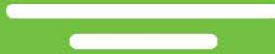


# updated site plan





**CITY PARK  
TOMORROW**





Oak Street

Bryan Avenue

Sheldon Drive

Jackson Avenue

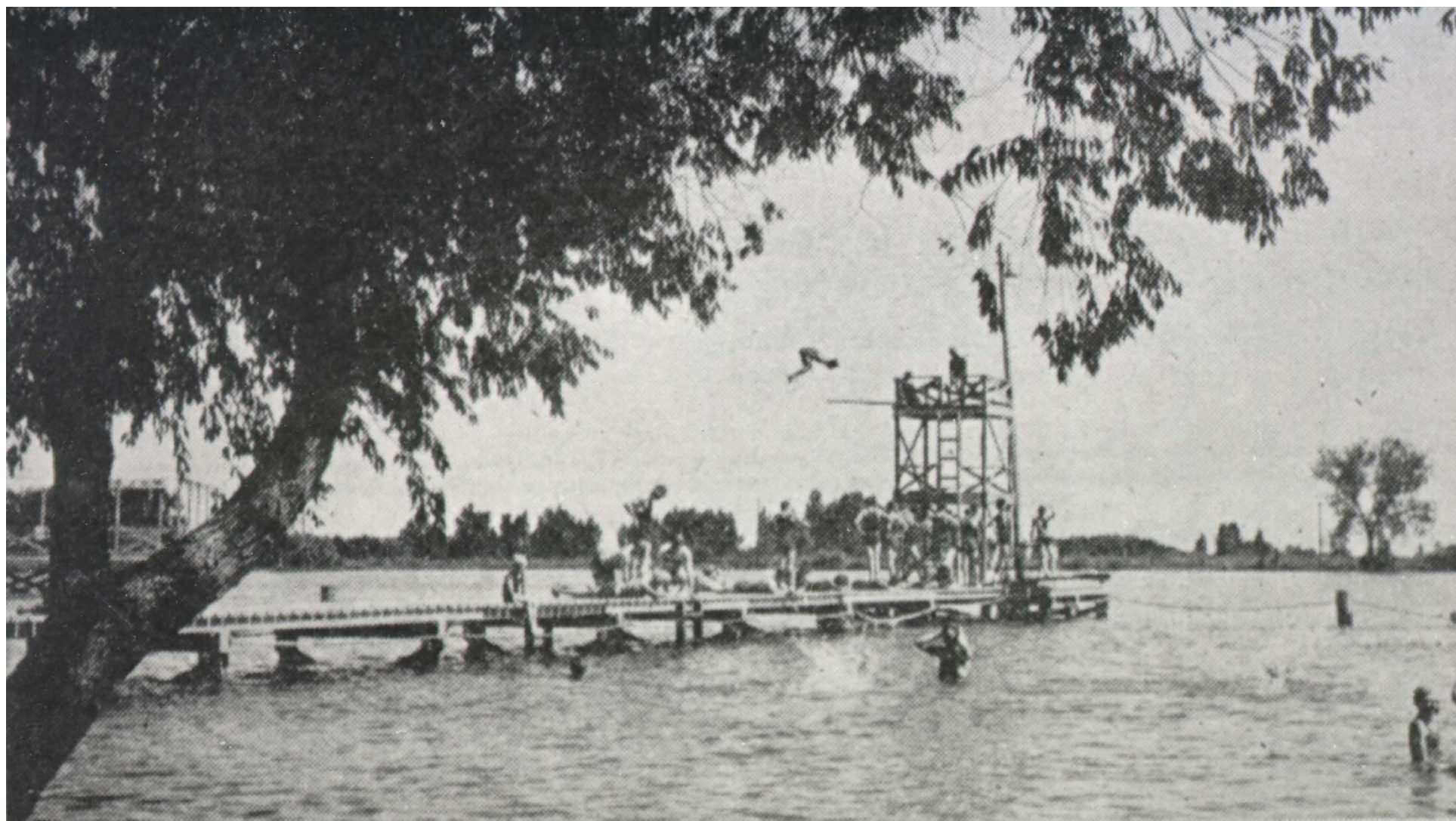
Mulberry Street

































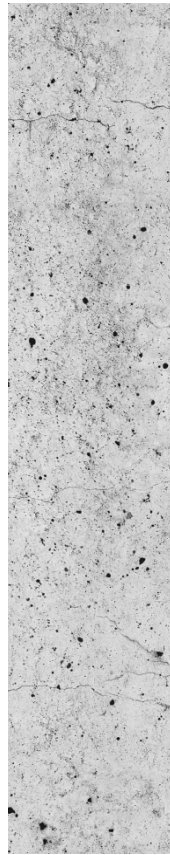
# garden palette



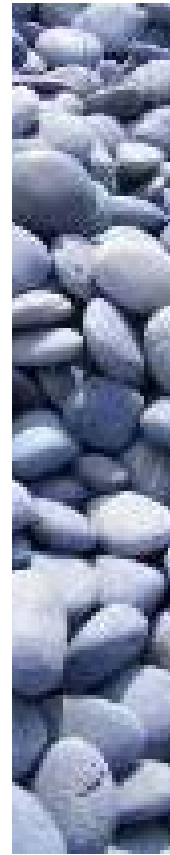
Steel



Turf



Stone



Pebble



Water



Trees



Steel



Fines





WILHITE





WILLHITE







City of  
**Fort Collins**



**Poudre River Whitewater Park**

## STUDY AREA





Stormwater  
Management

+



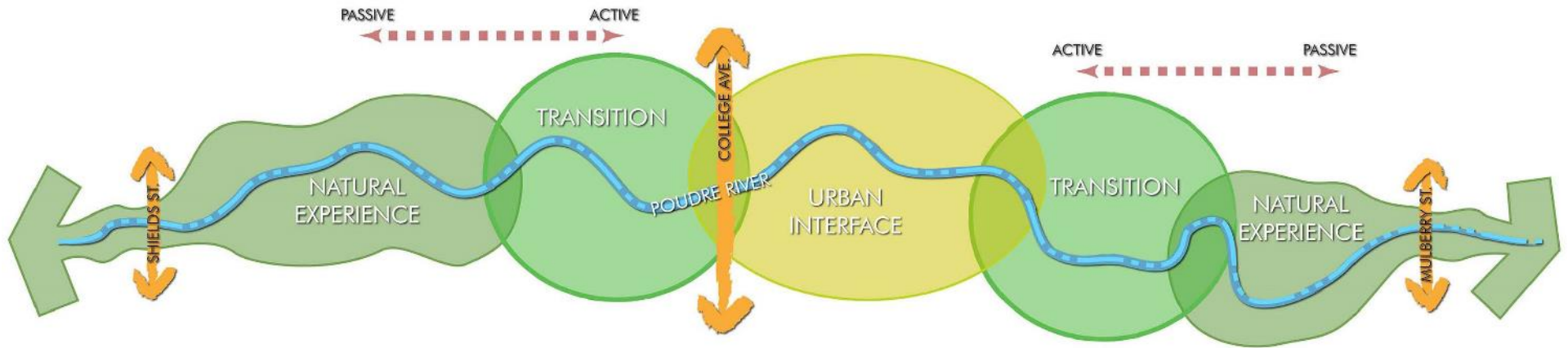
Natural Systems  
Connectivity

+



Recreation

# LAND USE TRANSITION





# POUDRE RIVER DOWNTOWN MASTER PLAN



APPROVED – OCTOBER 2014

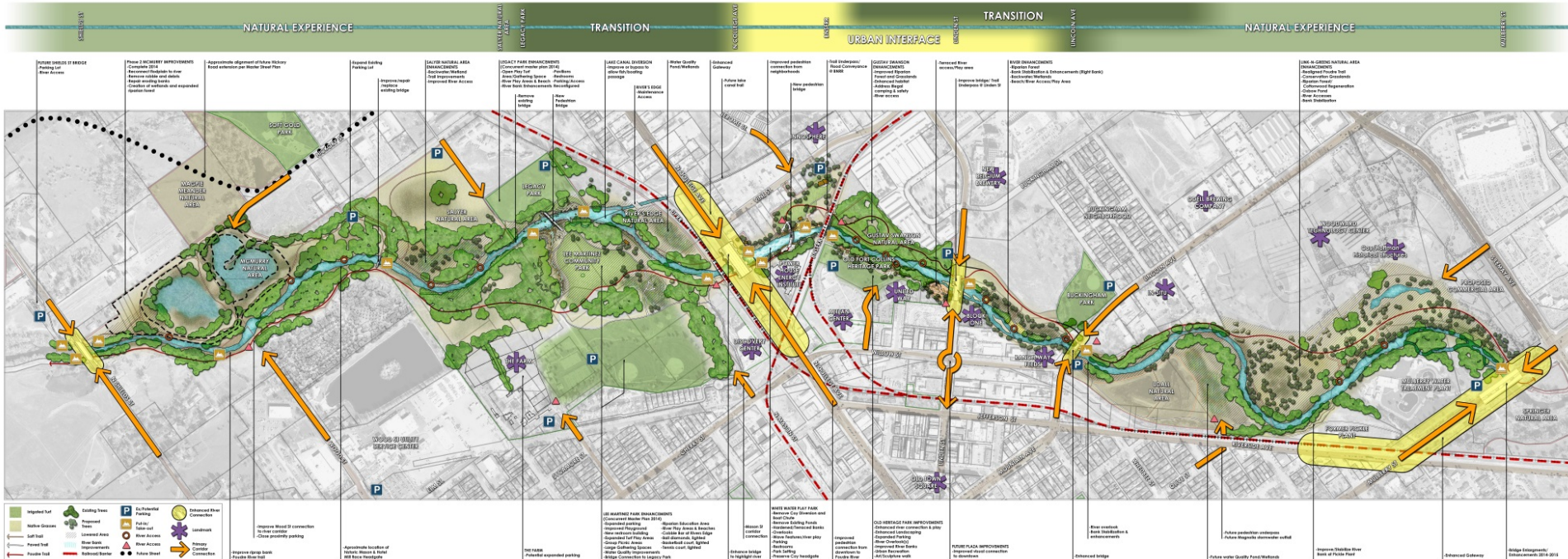
NATURAL EXPERIENCE

TRANSITION

URBAN INTERFACE

TRANSITION

NATURAL EXPERIENCE



**PARKING AT BRIDGE**  
Paving lot  
Bike Access

**Phase 1 MOBILITY IMPROVEMENTS**  
Concrete ADA  
Improve visibility and safety  
Edge marking lanes  
Condition of sidewalks and expanded landscaping

Appropriate alignment of Lake Mohave  
Elevated extension per Native Stated Plan

Enhanced Lighting  
Parking lot  
Improve habitat  
reduce walking bridge

**LAKE MEAD NATURAL AREA IMPROVEMENTS**  
Bioscience Research  
Soil Improvements  
Improved River Access

**LAKE MOHAVE NATURAL AREA IMPROVEMENTS**  
Soil Improvements  
Improved River Access

**LAKE CANAL DIVERSION IMPROVEMENTS**  
Improve on exposure to allow for lighting  
Improve lighting

Water Quality  
Flood Retention

Enhanced Gateway  
Park-like street feel

Improve pedestrian connection from neighborhood

High Endurance  
Road Construction  
Improve Pedestrian  
Improve Safety  
Improve Access

Improve River Access  
Improve Pedestrian  
Improve Safety  
Improve Access

**LAKE MOHAVE NATURAL AREA IMPROVEMENTS (Right Bank)**  
Improve River Access  
Improve Pedestrian  
Improve Safety  
Improve Access

**LAKE MEAD NATURAL AREA IMPROVEMENTS**  
Improve River Access  
Improve Pedestrian  
Improve Safety  
Improve Access

**LAKE MOHAVE NATURAL AREA IMPROVEMENTS (Left Bank)**  
Improve River Access  
Improve Pedestrian  
Improve Safety  
Improve Access

- Impacted Lot
- Native Grasses
- Soft Trail
- Footpath
- Runnable Trail
- Planting Trees
- Prepared Lawn
- Lowland Area
- Shrub Areas
- Runoff Canals
- Water Access
- Water Street
- Enhanced River
- Landmark
- Stream
- Concrete
- Concrete

Improve Road/B connection  
to Lake Access  
Close proximity parking

Improve River bank  
Provide River trail

Approximate location of  
Native Wetlands & Forest  
Map Not to scale

PHASE 1  
Proposed landscape plan

**LAKE MOHAVE NATURAL AREA IMPROVEMENTS**  
Improve River Access  
Improve Pedestrian  
Improve Safety  
Improve Access

**LAKE MEAD NATURAL AREA IMPROVEMENTS**  
Improve River Access  
Improve Pedestrian  
Improve Safety  
Improve Access

**LAKE CANAL DIVERSION IMPROVEMENTS**  
Improve River Access  
Improve Pedestrian  
Improve Safety  
Improve Access

**LAKE MOHAVE NATURAL AREA IMPROVEMENTS**  
Improve River Access  
Improve Pedestrian  
Improve Safety  
Improve Access

**LAKE MEAD NATURAL AREA IMPROVEMENTS**  
Improve River Access  
Improve Pedestrian  
Improve Safety  
Improve Access

**LAKE CANAL DIVERSION IMPROVEMENTS**  
Improve River Access  
Improve Pedestrian  
Improve Safety  
Improve Access

**LAKE MOHAVE NATURAL AREA IMPROVEMENTS**  
Improve River Access  
Improve Pedestrian  
Improve Safety  
Improve Access

**LAKE MEAD NATURAL AREA IMPROVEMENTS**  
Improve River Access  
Improve Pedestrian  
Improve Safety  
Improve Access

**LAKE CANAL DIVERSION IMPROVEMENTS**  
Improve River Access  
Improve Pedestrian  
Improve Safety  
Improve Access

**LAKE MOHAVE NATURAL AREA IMPROVEMENTS**  
Improve River Access  
Improve Pedestrian  
Improve Safety  
Improve Access

**LAKE MEAD NATURAL AREA IMPROVEMENTS**  
Improve River Access  
Improve Pedestrian  
Improve Safety  
Improve Access

**LAKE CANAL DIVERSION IMPROVEMENTS**  
Improve River Access  
Improve Pedestrian  
Improve Safety  
Improve Access

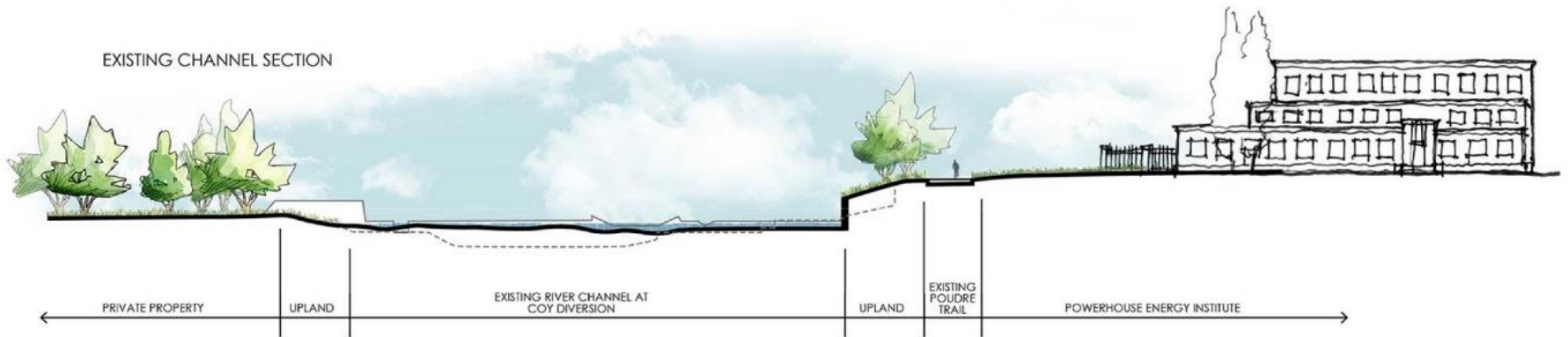


MASTER PLAN - REACH 3

PROPOSED CHANNEL SECTION



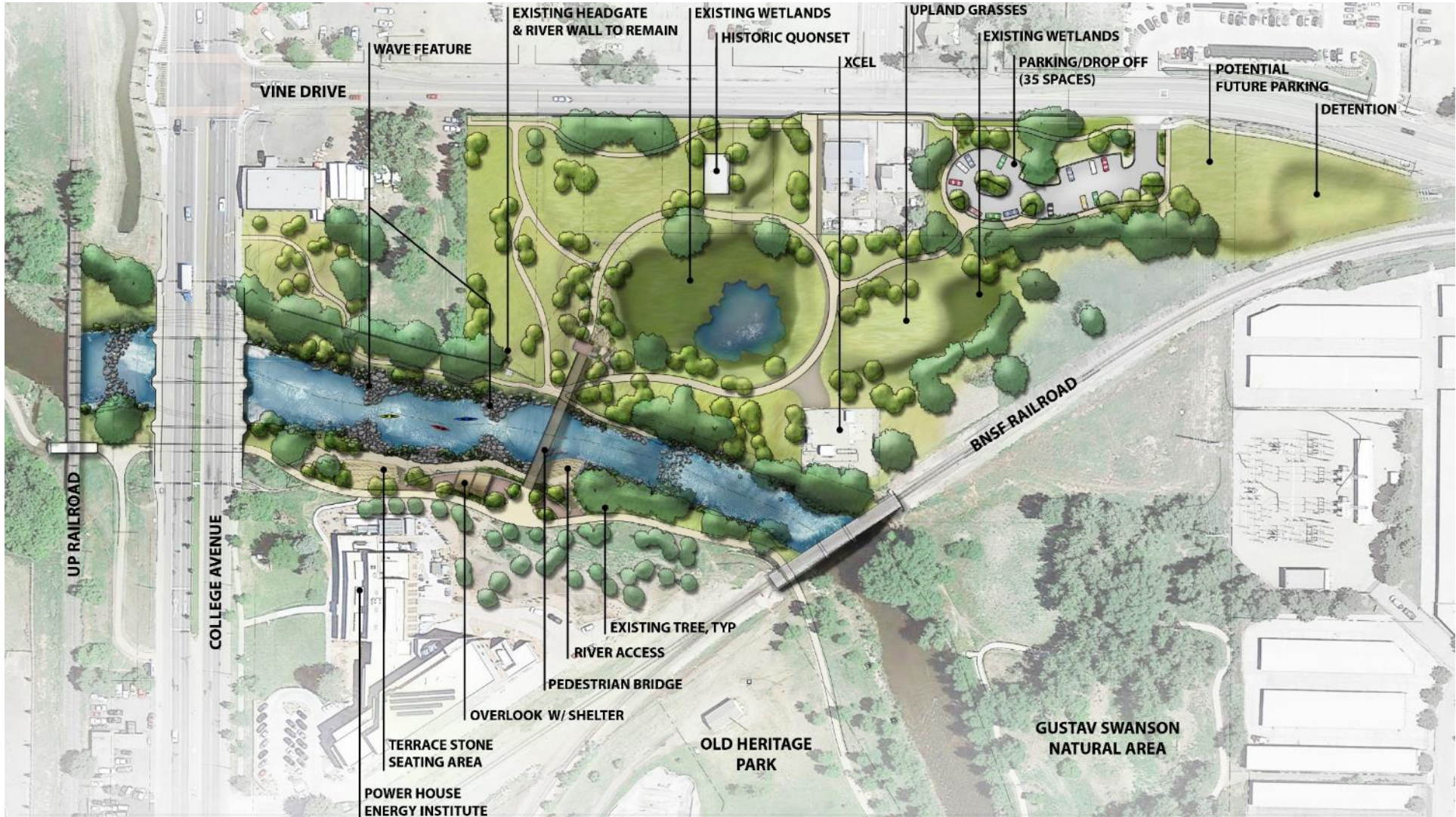
EXISTING CHANNEL SECTION





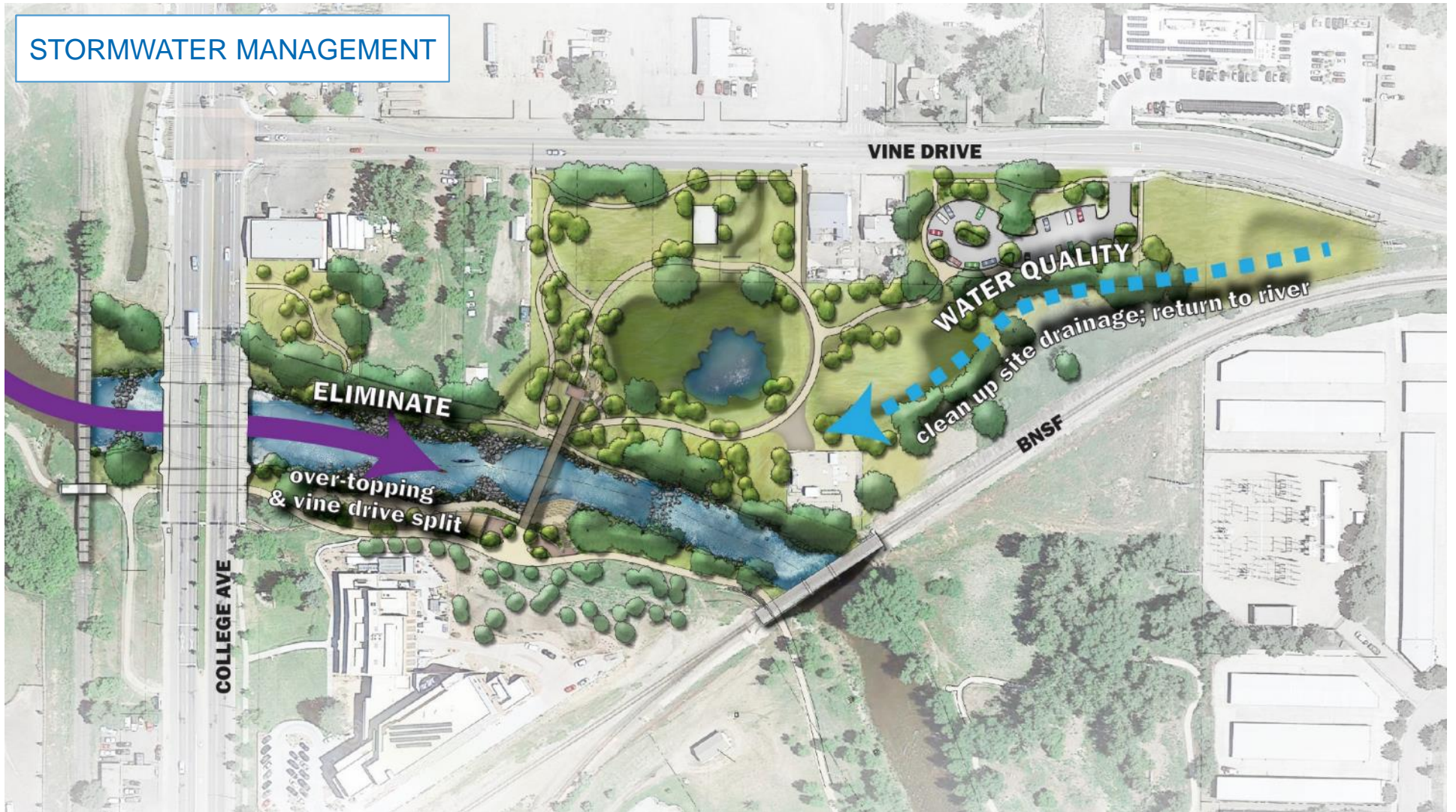




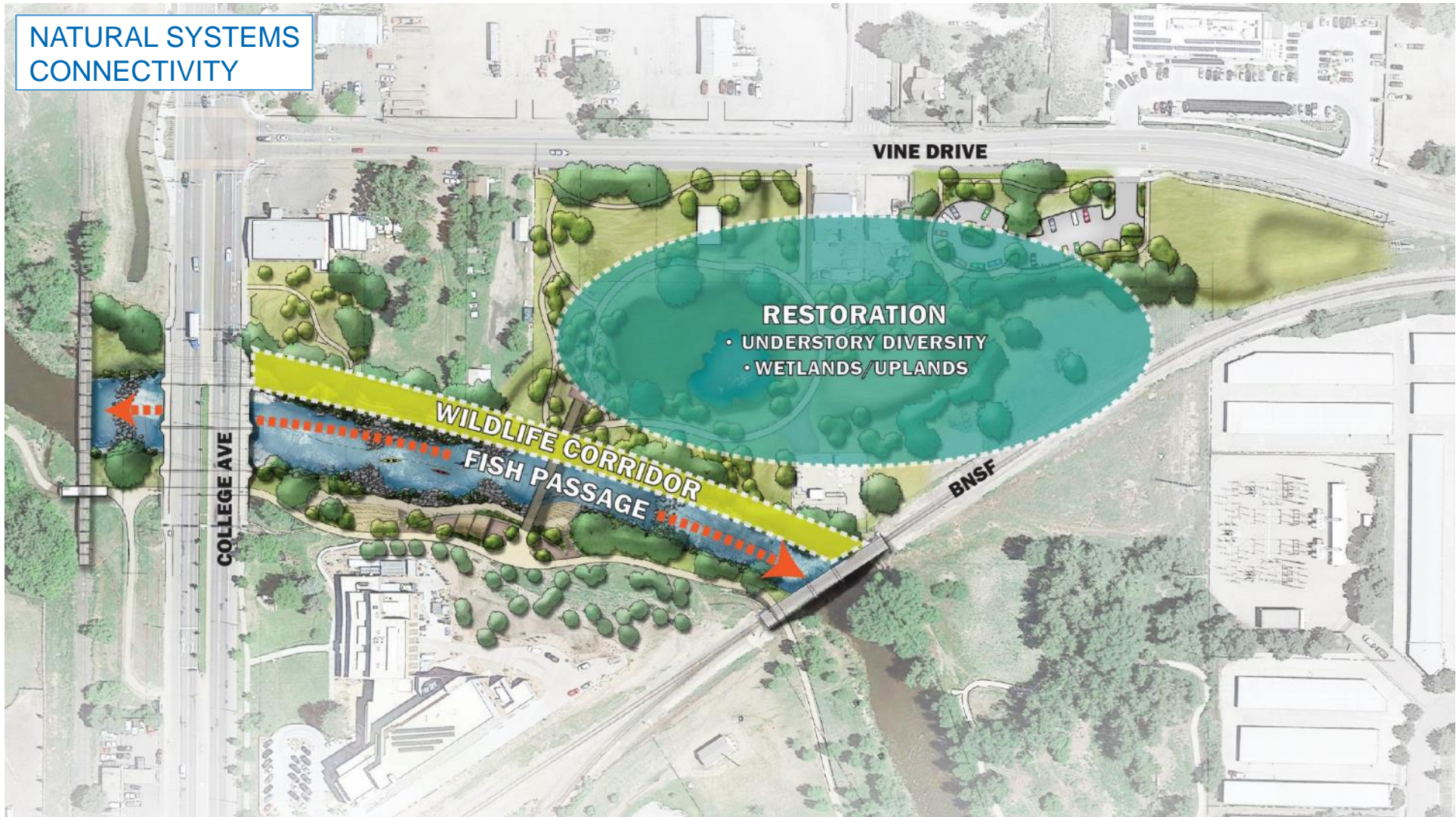




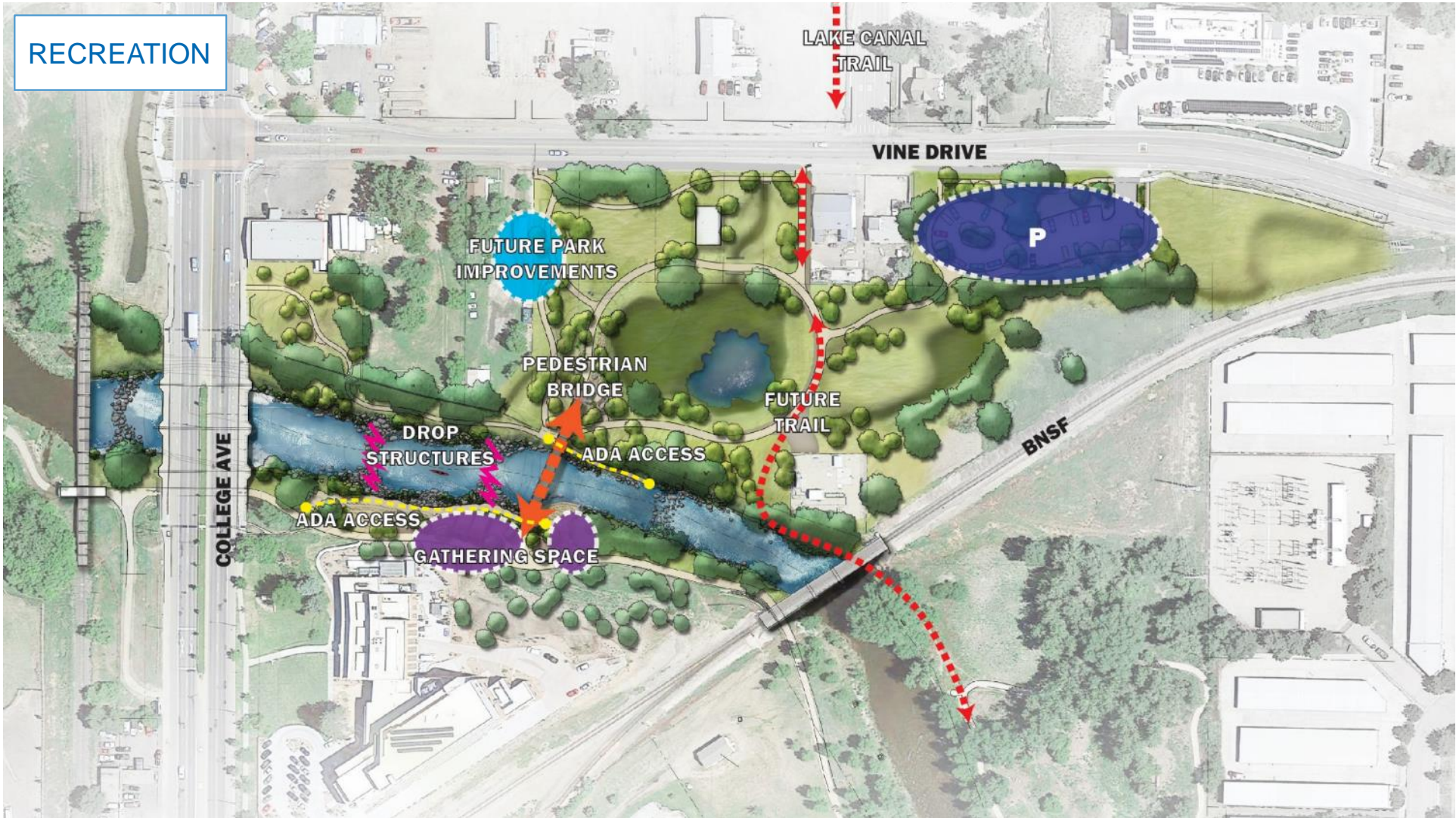
# STORMWATER MANAGEMENT



**NATURAL SYSTEMS  
CONNECTIVITY**



RECREATION

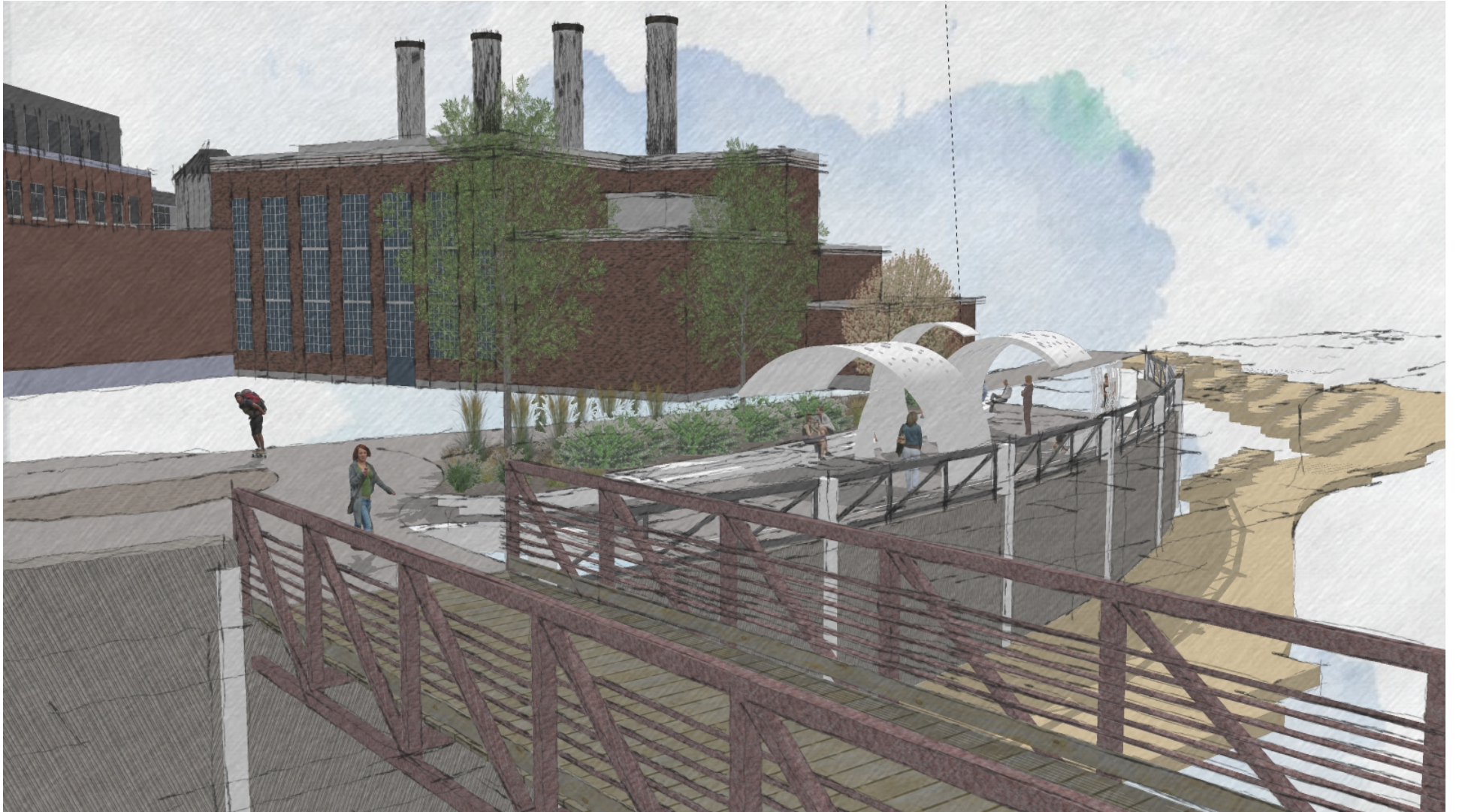






PROPOSED SITE CHARACTER



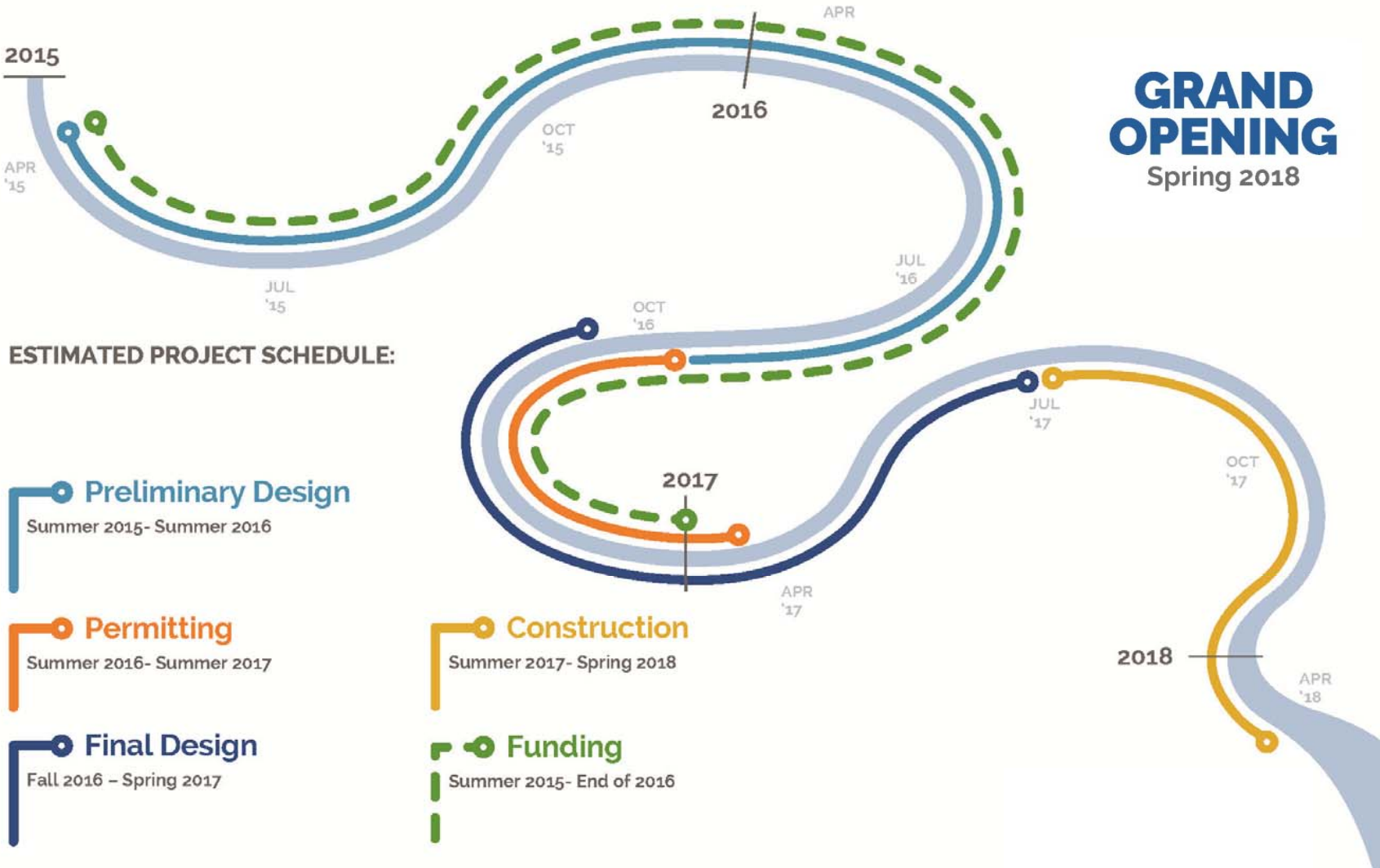






# GRAND OPENING

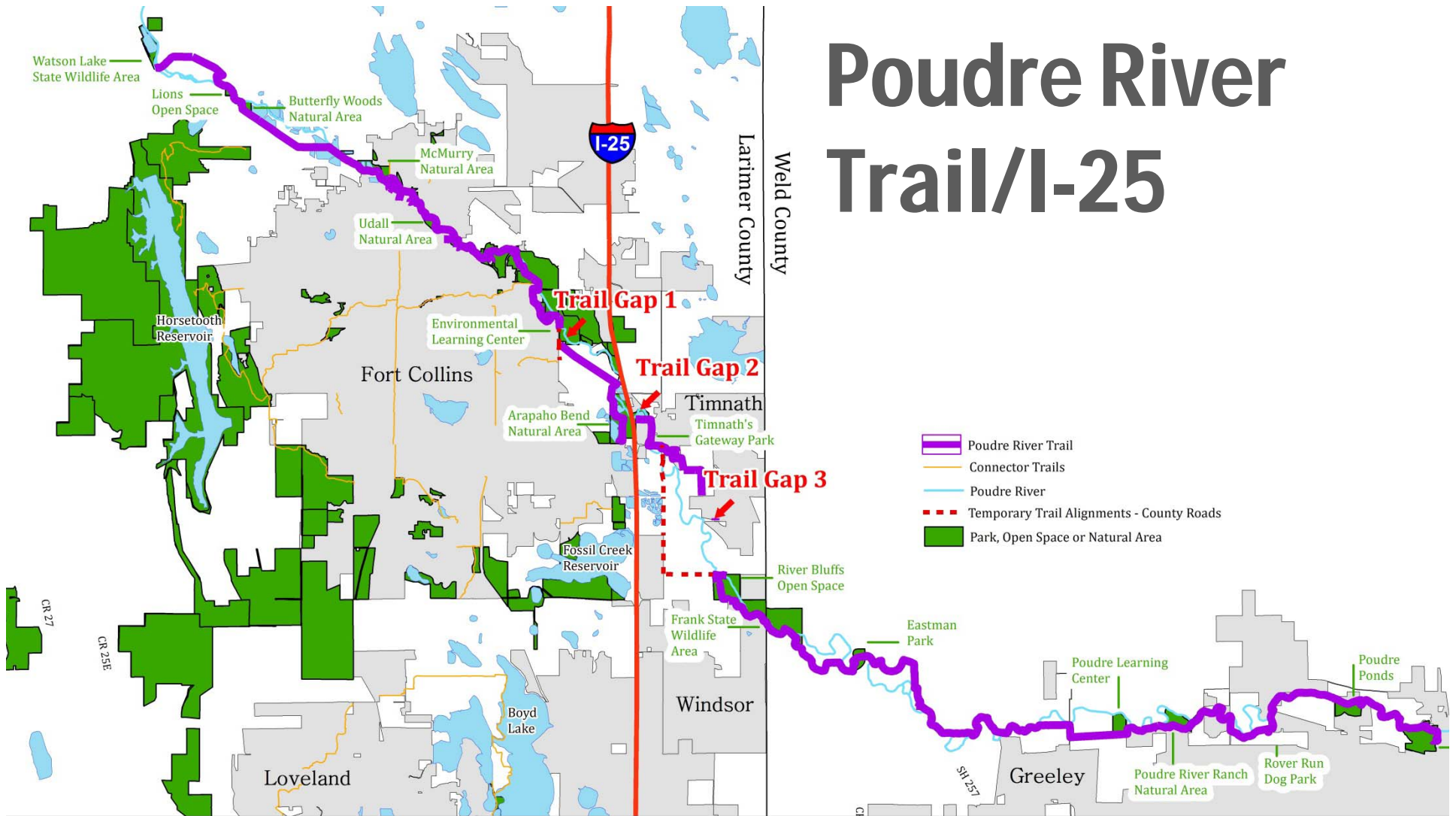
Spring 2018





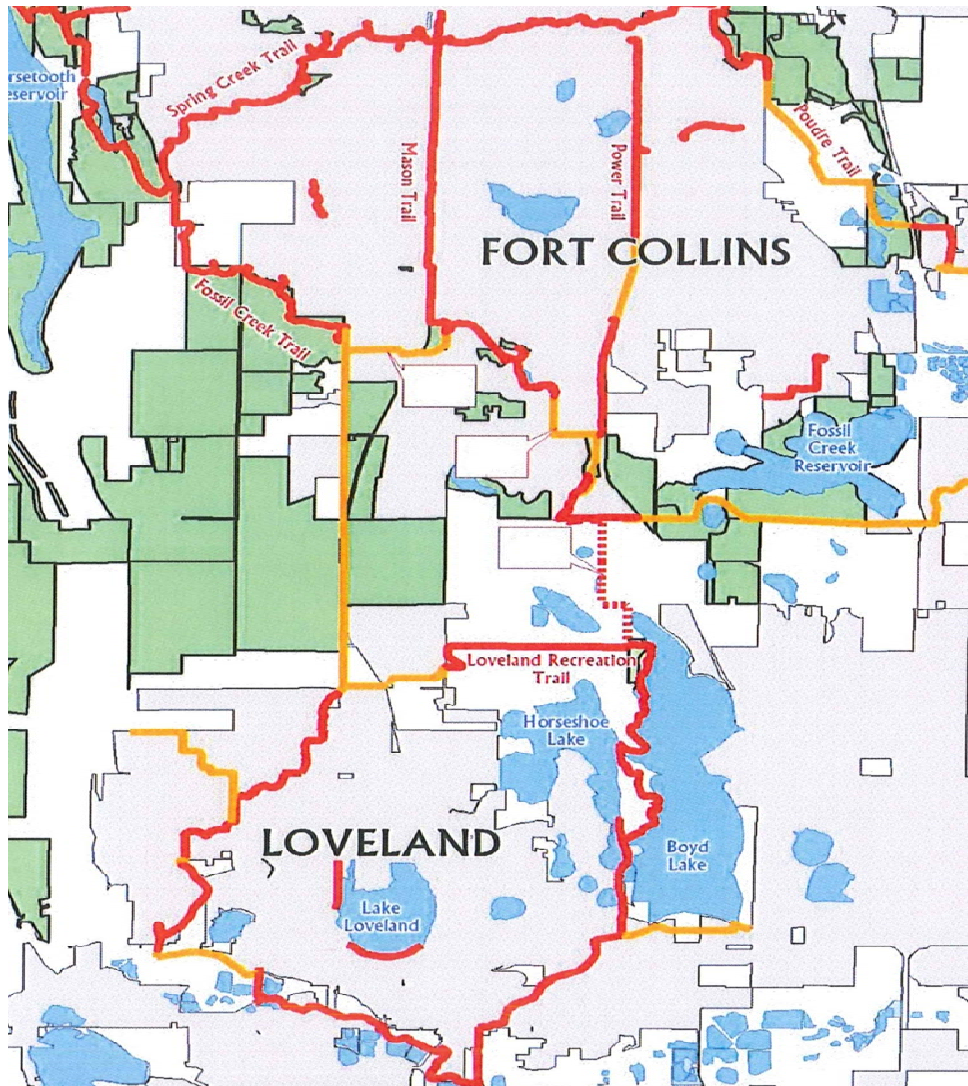
trails

# Poudre River Trail/I-25



# Poudre River Trail/I-25





# Fort Collins/ Loveland Trail Connections

- Longview Trail
- Front Range Trail



**BNSF crossing**









**more info:**

[fcgov.com/parkplanning](https://fcgov.com/parkplanning)