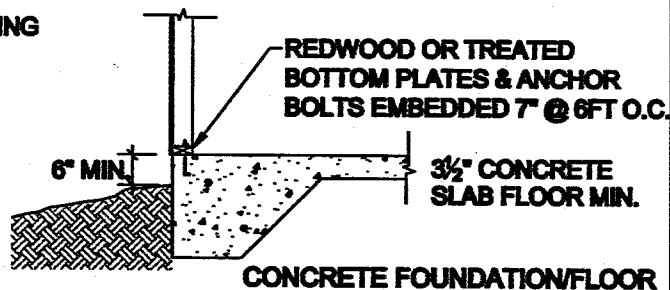
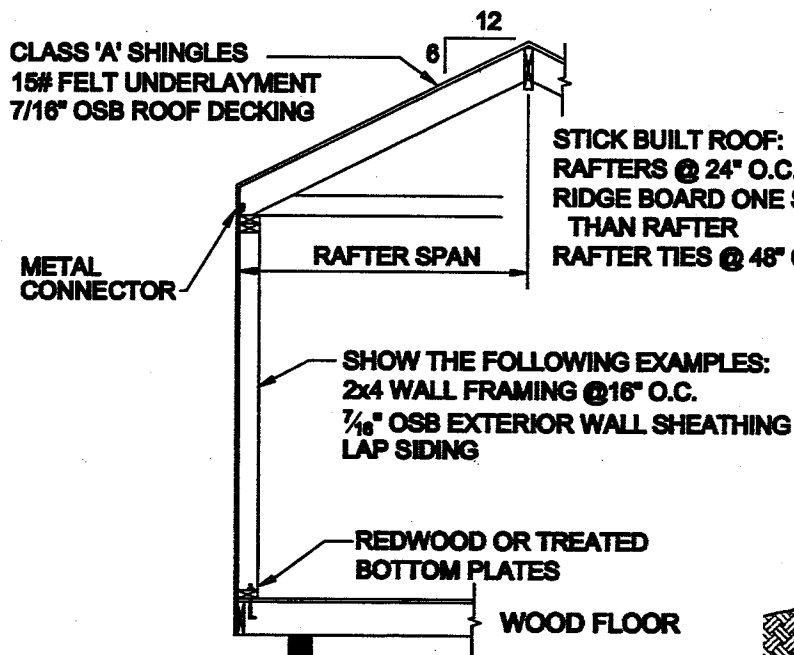
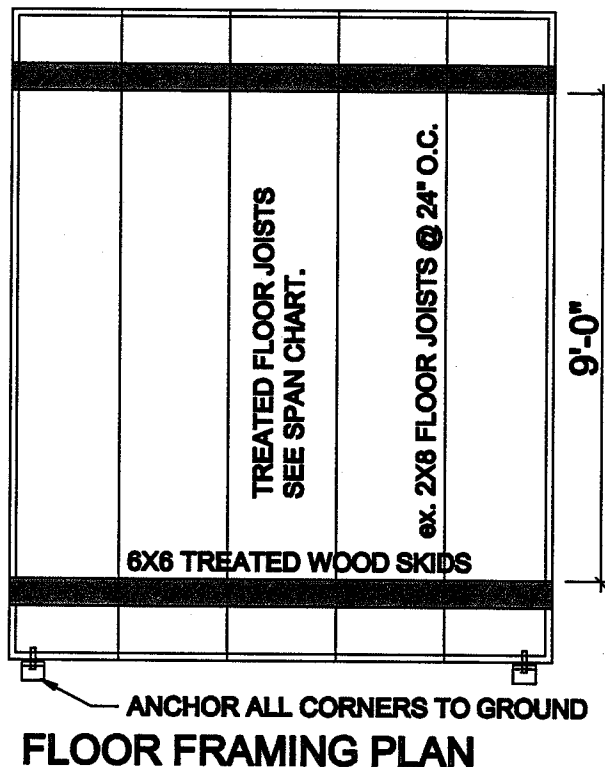
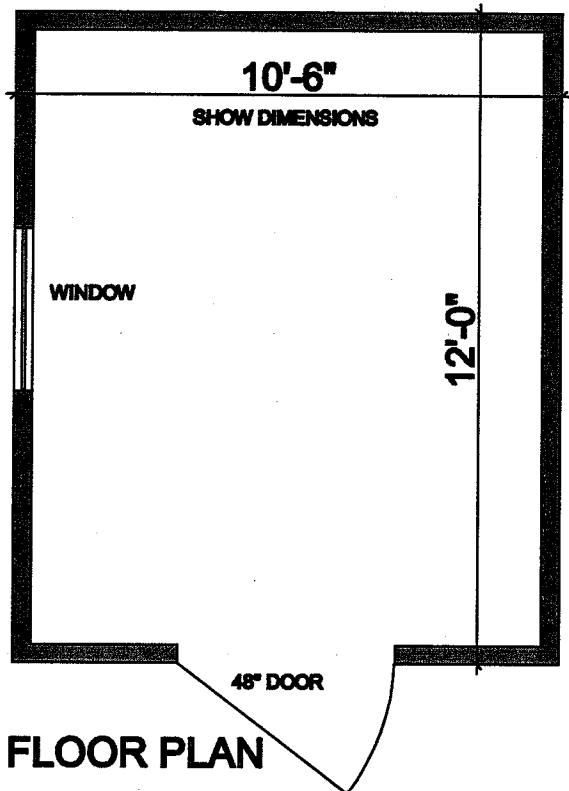


**RESIDENTIAL DETACHED SHED HANDOUT**

REVISED 1/12/10

A PERMIT IS REQUIRED FOR SHEDS THAT ARE HIGHER THAN 8FT AT THE ROOF PEAK AND/OR HAVE A FLOOR AREA LARGER THAN 120 SQUARE FEET AND/OR LOCATED LESS THAN 3 FEET FROM PROPERTY LINE..



**SCALE 1/4" = 1'-0"**

### MAXIMUM RAFTER SPAN CHART

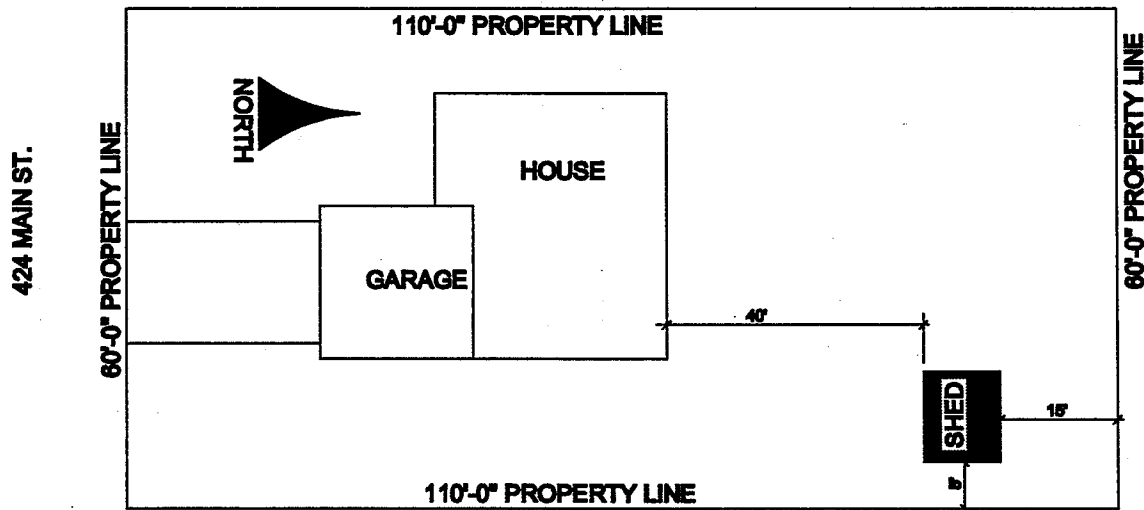
|      | 12" O.C. | 16" O.C. | 24" O.C. |
|------|----------|----------|----------|
| 2x4  | 8'-0"    | 7'-3"    | 6'-4"    |
| 2x6  | 12'-7"   | 11'-5"   | 9'-7"    |
| 2x8  | 16'-7"   | 14'-11"  | 12'-2"   |
| 2x10 | 21'-0"   | 18'-2"   | 14'-10"  |
| 2x12 | 24'-4"   | 21'-1"   | 17'-3"   |

2003 IRC table R802.5.1(5), hem fir #2

### MAXIMUM JOIST SPAN CHART

|      | 12" O.C. | 16" O.C. | 24" O.C. |
|------|----------|----------|----------|
| 2x6  | 10'-0"   | 9'-1"    | 7'-11"   |
| 2x8  | 13'-2"   | 12'-0"   | 10'-2"   |
| 2x10 | 16'-10"  | 15'-2"   | 12'-5"   |
| 2x12 | 20'-4"   | 17'-7"   | 14'-4"   |

2003 IRC table R502.3.1(2), hem fir #2



**SAMPLE SITE PLAN**

**SCALE 1"=20'**

#### Submittal Requirements for sheds

1. Two sets of plans of the proposed shed. See the front page as an example of the plans you will need to submit. The plans *do not* have to be professionally drawn, nor computer generated, but must be neat, clean and legible.
2. Two sets of site plans, drawn to scale, on paper no bigger than 8 1/2" x 14", see example above.
3. Completed two-part application form, available with other Building Services handouts at 281 N. College Ave or on the website [www.fcgov.com](http://www.fcgov.com). The legal information requested on the application must be completed in full.
4. Completed Homeowner's Affidavit, if applicable (for homeowners doing the construction). The form is available at Building Services, 281 N. College Ave.

#### Required Inspections:

#### **Final Inspection**