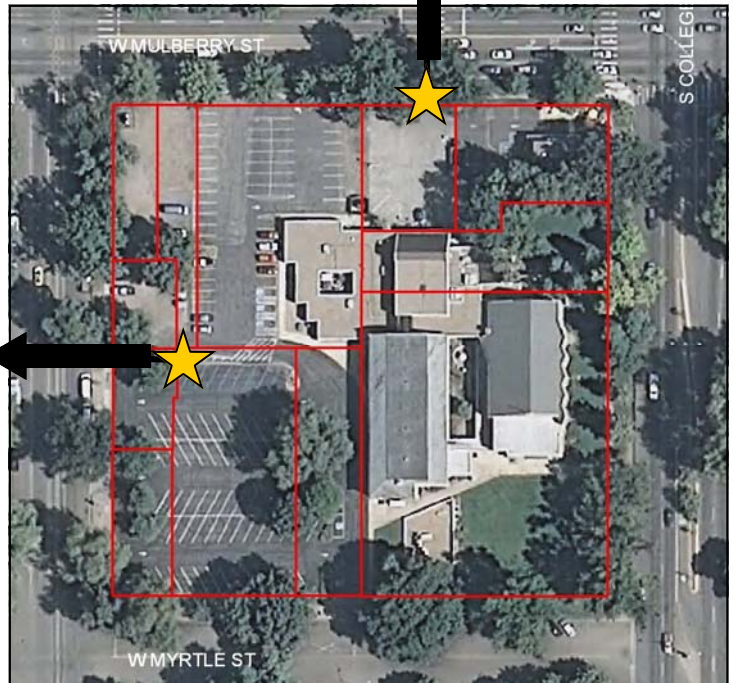




Transformer Cabinet Mural Project 2010
Artist: Ren Burke
Location: 501 S. College and 518 S. Mason

My designs for this year's transformer cabinets are inspired by the honeybee and her labors. "Hive" will have all surfaces of the cabinet showing the interior of a beehive with its hexagonal patterned honeycombs. Stylized bees will be shown hard at work, tending to the young bees, the queen and the hive itself. The honeycombs and bees will be larger-than-life; each cell will measure approximately 2 - 2.5" across, while the bees will measure about 6" long. At this scale, the subject matter will be recognizable to both vehicular traffic and pedestrians.



"Meadow" shows brightly colored wildflowers abuzz with bees collecting nectar and pollen. This cabinet continues the bee theme across the parking lot, therefore connecting the two boxes thematically. The flowers will take a more geometrical design, to correspond with the strong geometric patterning of the "Hive" cabinet. Bright colors and whimsical depictions of the worker bees will appeal to passers-by.