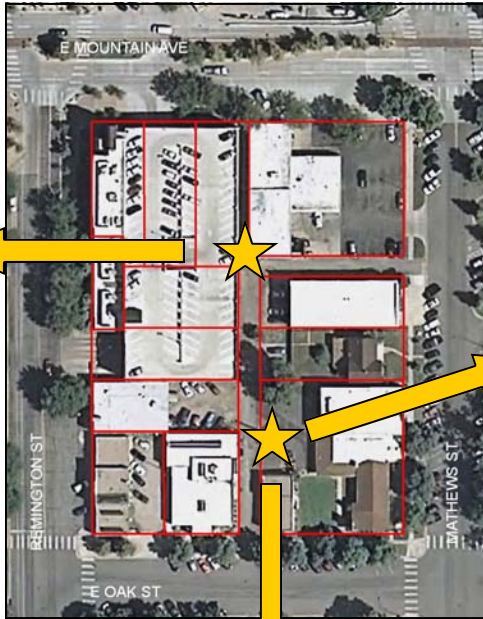
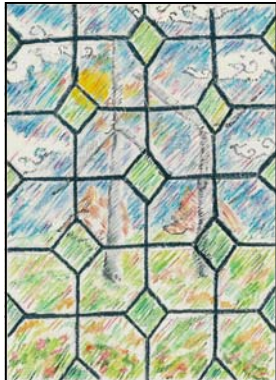
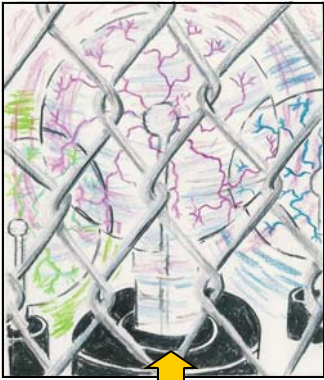


**Transformer Cabinet Mural Project 2010**  
**Artist: Chris Bates**  
**Location: Behind 221 E. Mountain and Behind 142 Remington**

The design for the cabinet at 221 E. Mountain is made with the theme “outside looking in”. Each side has a different way of looking at objects through another. All sides have a close up foreground and an interior background. The foregrounds are things that can be looked into or through. The backgrounds are composed of different ways of producing energy. The foregrounds’ “outsides” will include chain link fence, rusted metal, stained glass, and the mouth of a cave. These will be paired with “insides” of electric globes, the inside of the transformer box, a wind farm scene and a hand crank generator.



The design for the cabinet at 142 Remington is a mosaic theme that is repeated around the entire box. These designs are inspired by the geometric patterns of MC Escher’s Tessellations and the mosaics found in Islamic Art. There will be three themes that fade in and out of each other. The different themes will be defined by multiple views of Earth, bicycle chain rings, and the phases of the moon. These patterns will be very colorful and draw the viewer to move around the box because there will be three designs to cover a four sided object.