

Transformer Cabinet Mural Project 2013
Artist: Jaime Gastelle
Location: 2 cabinets: 230 W. Laurel,
and 920 S. Overland Trail, across from CSU Equine Center



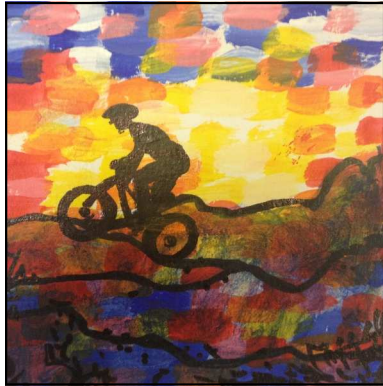
Laurel Street Cabinet



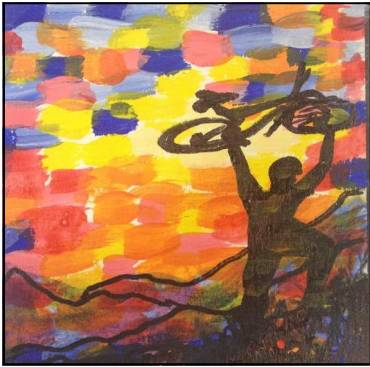
Front



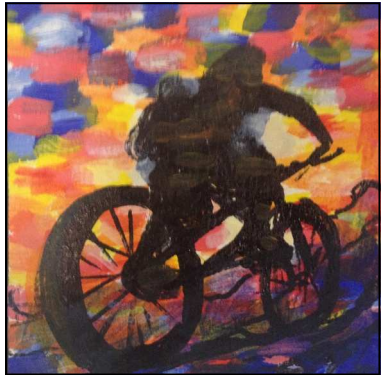
Top



Right



Back



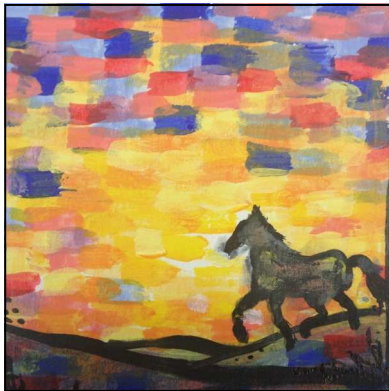
Left

Transformer boxes provide the community with recognized points of focus. For these transformer boxes I chose to do themes that are important to the Fort Collins community. For the transformer box on Laurel, I chose a bike theme because Old Town Fort Collins is very bike oriented. The transformer box near the Equine Center at CSU has horses on it because it is the area of study for many students driving past it. Within these contexts I used color to add vibrancy. Especially at sunrise or sunset, the world is filled with vibrant colors that seem to penetrate everything. I use blocks of color to mimic the feeling of a beautiful sunrise or sunset to submerge the entire image in color. This reflects the energy of the moment, and is also visually appealing. After building form purely out of color, I add a dark outline to bring clarity to the design. The distinct linear quality adds a nice contrast to the blended colors.

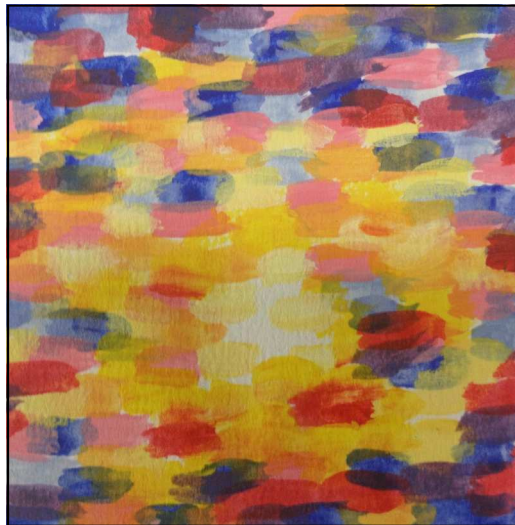
Transformer Cabinet Mural Project 2013
Artist: Jaime Gastelle
Location: 2 cabinets: 230 W. Laurel,
and 920 S. Overland Trail, across from CSU Equine Center



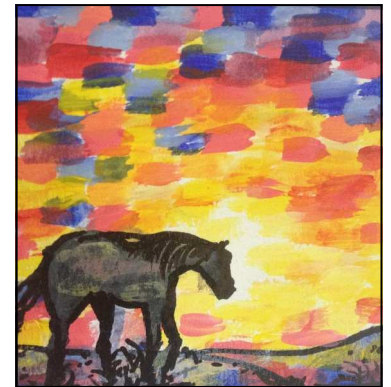
Overland Trail Cabinet



Front



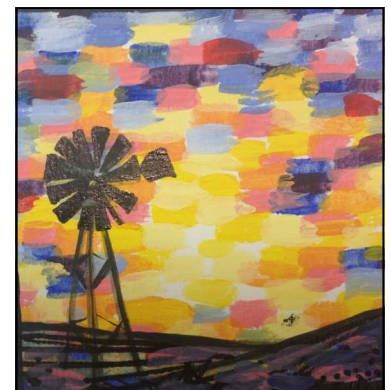
Top



Right



Back



Left