

Traffic Impact Studies

Prepared for:
Student Housing Action Plan Stakeholders Group Meeting
July 2012



Traffic Impact Studies

1. Document Existing Conditions
2. Identify “Background” Traffic i.e. committed projects and other non-development related traffic growth
3. Estimate New Trips from Proposed Development
 - Vehicles, Pedestrians, Bicyclists, Transit
4. Assign Trips to the Transportation System
5. Assess the Impacts
6. Determine Mitigation
 - Increase Capacity – Roadway widening, turn lanes etc.
 - Decrease Demand – Reduce vehicle mode share, reduce trip generation etc.



Trip Generation

Apartment (220)

Average Vehicle Trip Ends vs: Dwelling Units
On a: Weekday

Number of Studies: 88
Avg. Number of Dwelling Units: 210
Directional Distribution: 50% entering, 50% exiting

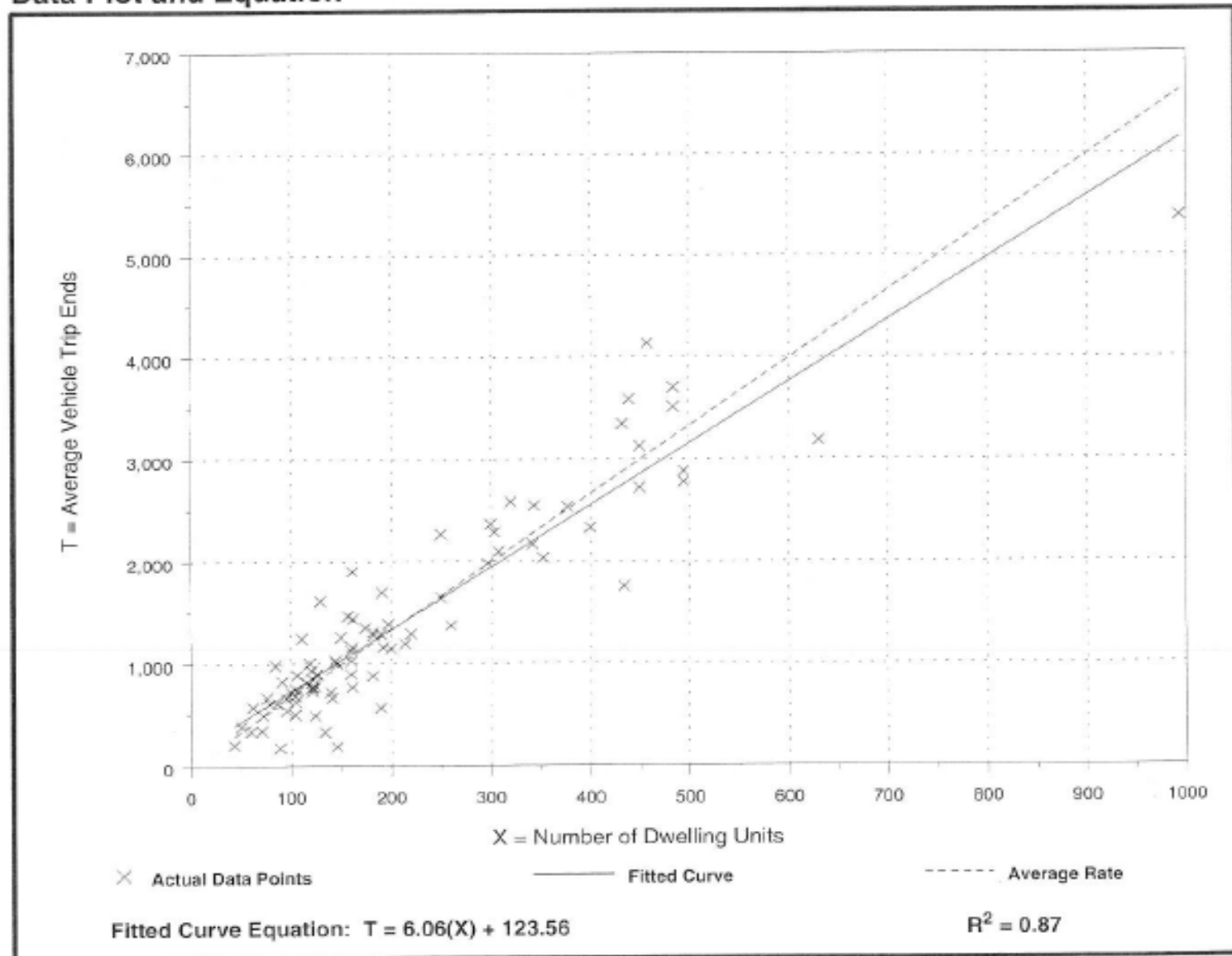
Trip Generation per Dwelling Unit

Average Rate	Range of Rates	Standard Deviation
6.65	1.27 - 12.50	3.07

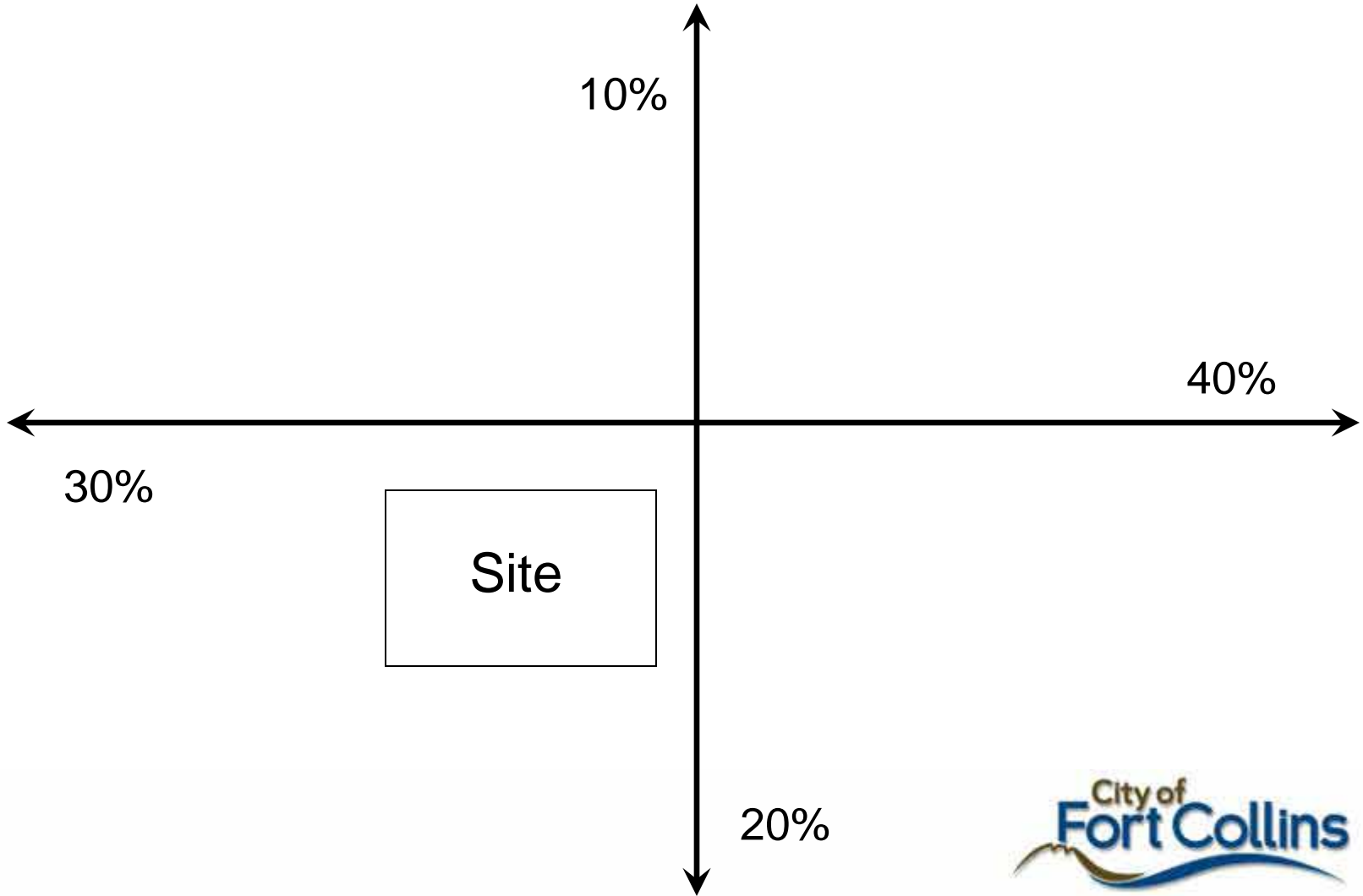


Trip Generation

Data Plot and Equation



Trip Distribution



Traffic Impact Studies

- Assessment includes estimation of Level of Service (amount of delay) at nearby intersections.
- Compare to Thresholds in City Standards
- Studies not intended to quantify neighborhood quality of life impacts
- Only daily traffic volume estimates on minor streets



Questions?

