



Pedestrian Experience

Prospect to Drake



LEGEND

January, 2014




Sidewalks*

-  **Meets Standards**
(Good or fair condition, minimum 5 ft. width, ADA compliant)
-  **Does Not Meet Standards**
(Poor condition, narrow width, not ADA compliant, or missing)

Curb Ramps*

-  **Meets Standards**
(Satisfactory slope and width, ADA compliant)
-  **Does Not Meet Standards**
(Slope and width substandard, not ADA compliant, missing)

Other

-  **Multi-Use Trail**
-  **MAX Station**
-  **Signalized Intersection**

* based on City of Ft. Collins 2011 Inventory



0 150 300 600 Feet

Scale 1 : 4,400





Pedestrian Experience

Drake to Horsetooth



LEGEND

January, 2014




Sidewalks*

-  **Meets Standards**
(Good or fair condition, minimum 5 ft. width, ADA compliant)
-  **Does Not Meet Standards**
(Poor condition, narrow width, not ADA compliant, or missing)

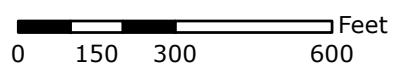
Curb Ramps*

-  **Meets Standards**
(Satisfactory slope and width, ADA compliant)
-  **Does Not Meet Standards**
(Slope and width substandard, not ADA compliant, missing)

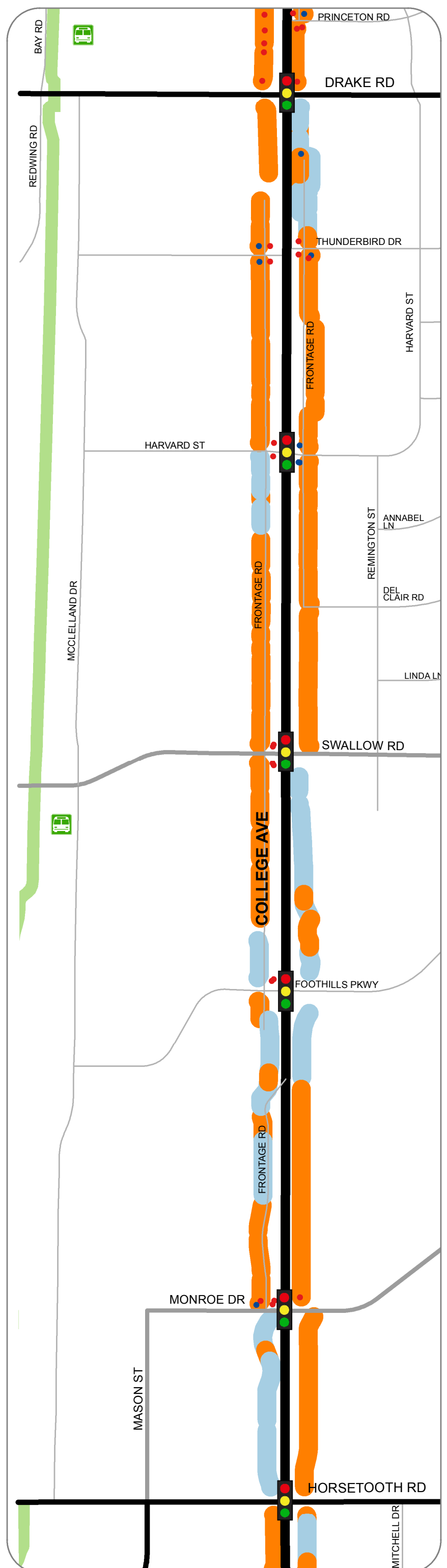
Other

-  **Multi-Use Trail**
-  **MAX Station**
-  **Signalized Intersection**

* based on City of Ft. Collins 2011 Inventory



Scale 1 : 4,400





Pedestrian Experience

Horsetooth to Harmony



LEGEND

January, 2014




Sidewalks*

-  Meets Standards
(Good or fair condition, minimum 5 ft. width, ADA compliant)
-  Does Not Meet Standards
(Poor condition, narrow width, not ADA compliant, or missing)

Curb Ramps*

-  Meets Standards
(Satisfactory slope and width, ADA compliant)
-  Does Not Meet Standards
(Slope and width substandard, not ADA compliant, missing)

Other

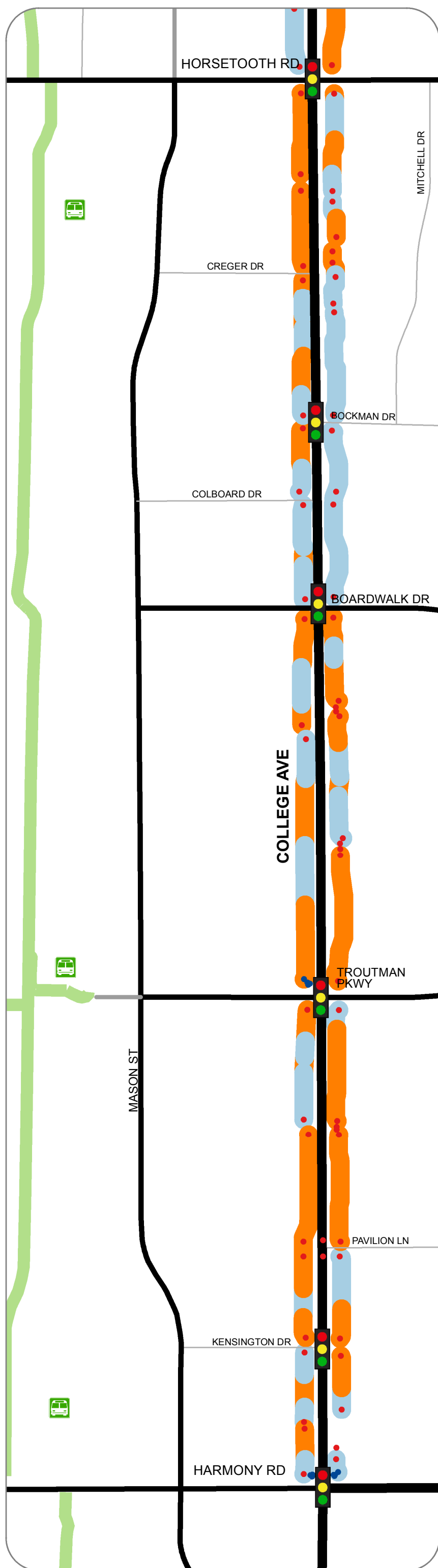
-  Multi-Use Trail
-  MAX Station
-  Signalized Intersection

* based on City of Ft. Collins 2011 Inventory

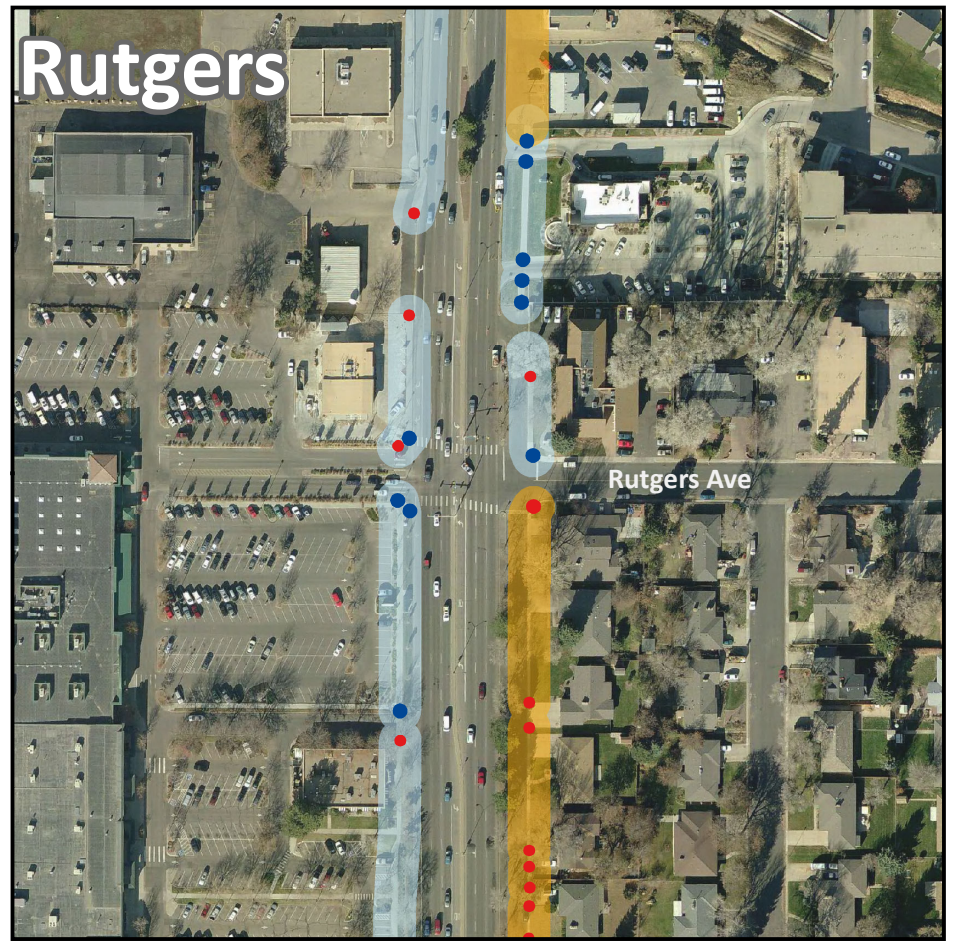
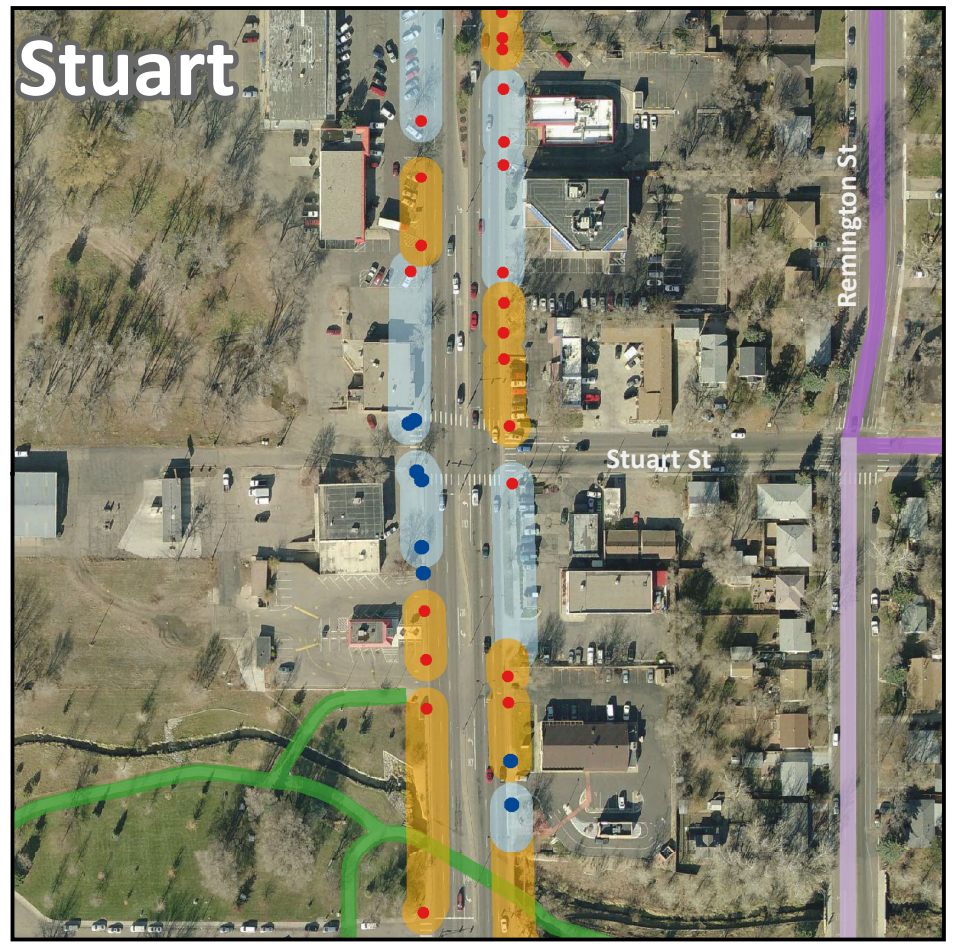


0 150 300 600 Feet

Scale 1 : 4,400



Pedestrian Experience -- Signalized Intersections 1



LEGEND

January, 2014

Sidewalks*

- Meets Standards
(Good or fair condition, min. 5 ft. width, ADA compliant)
- Does Not Meet Standards
(Poor condition, narrow width, not ADA compliant, or missing)

Curb Ramps*

- Meets Standards
(Satisfactory slope and width, ADA compliant)
- Does Not Meet Standards
(Slope and width substandard, not ADA compliant, or missing)

Bicycle Facilities

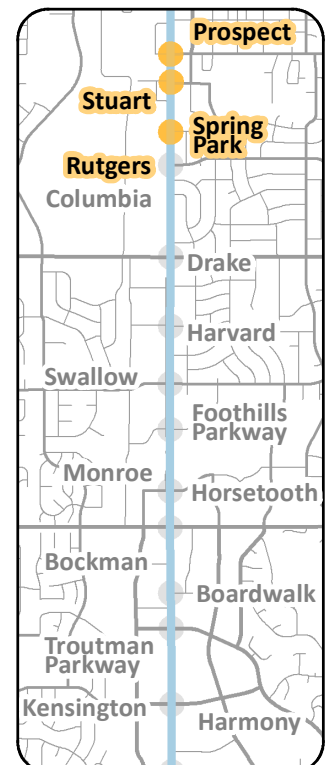
- Bicycle Lanes
- Bicycle Route
- Multi-Use Trail

Scale 1 : 2,500

0 75 150 300 Feet

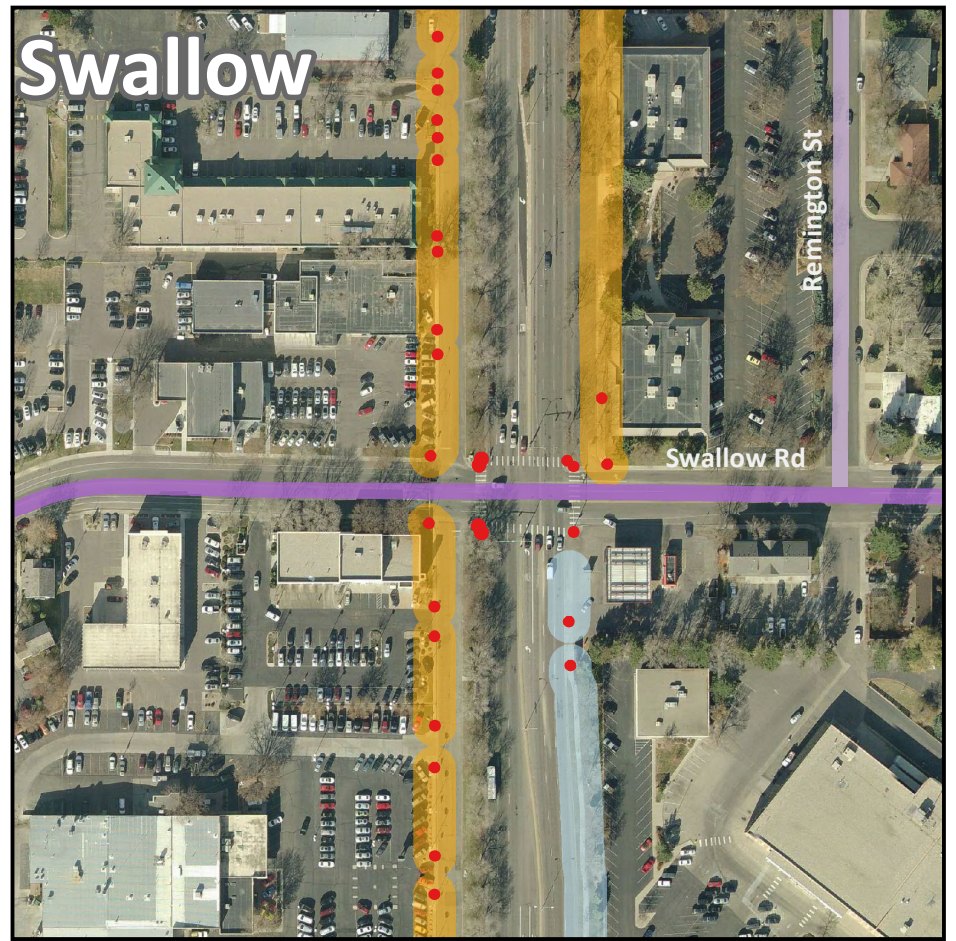
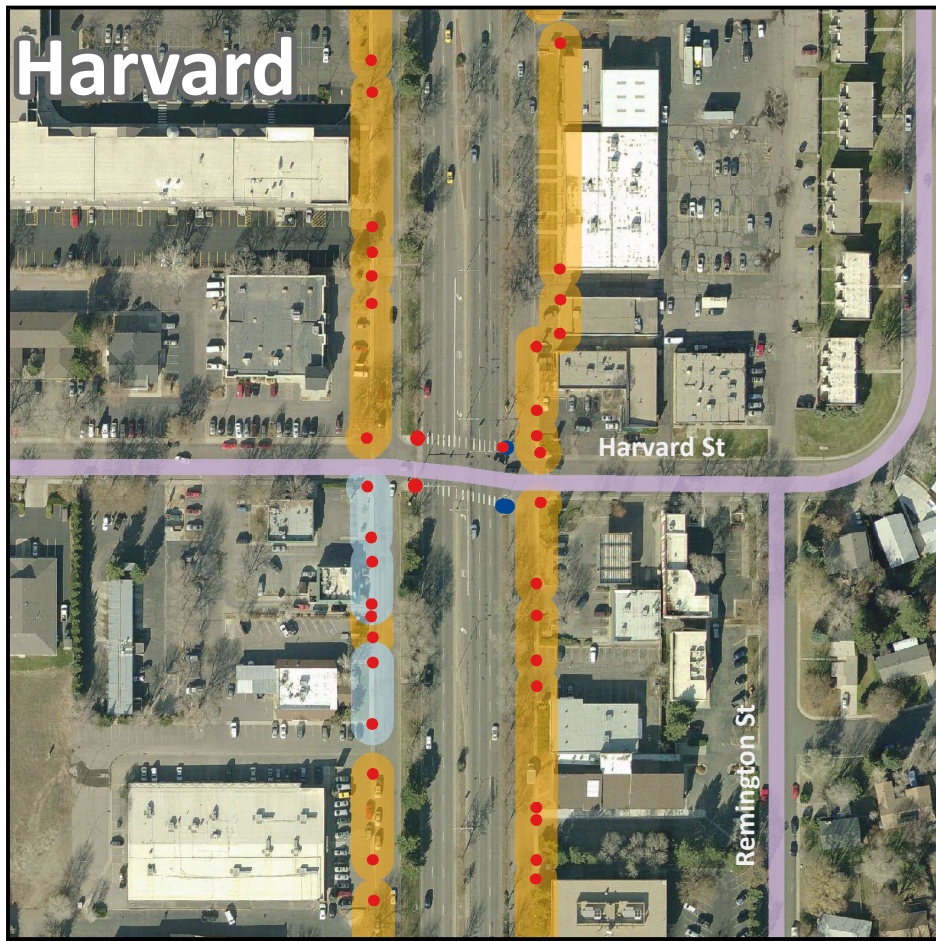
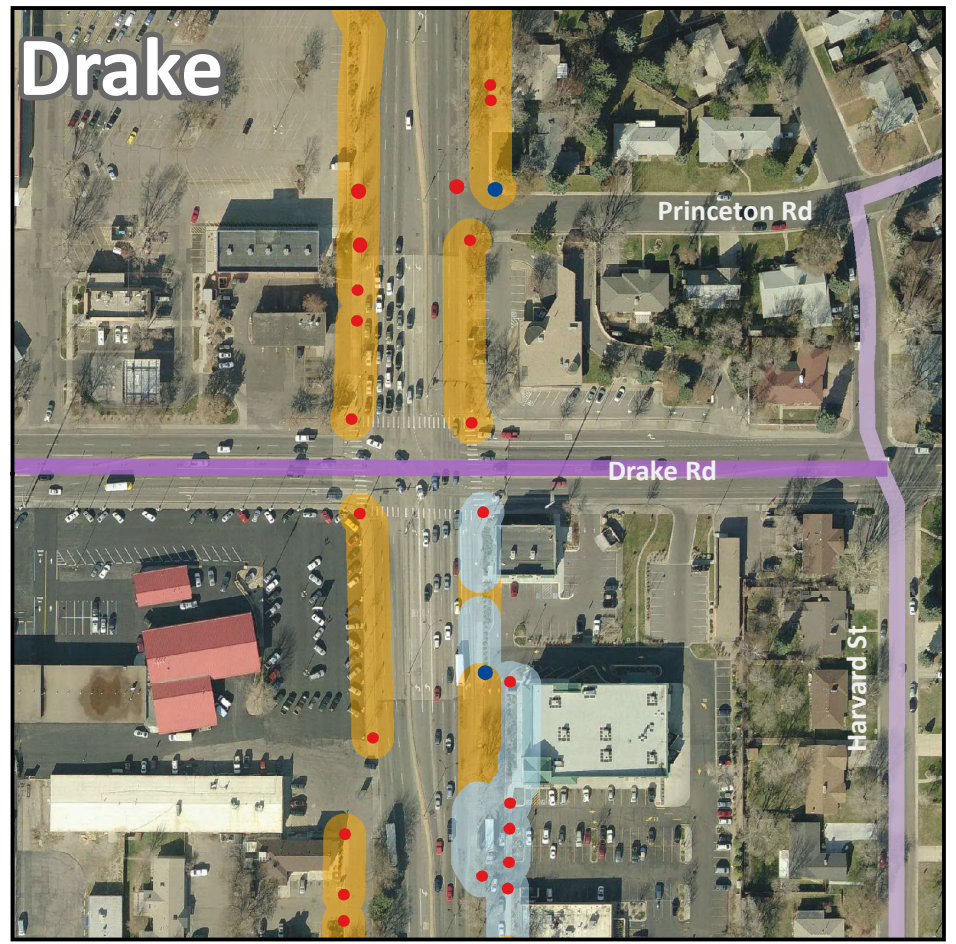


Locator Map



* based on City of Ft. Collins 2011 Inventory

Pedestrian Experience -- Signalized Intersections 2



LEGEND

January, 2014

Sidewalks*

- Meets Standards
(Good or fair condition, min. 5 ft. width, ADA compliant)
- Does Not Meet Standards
(Poor condition, narrow width, not ADA compliant, or missing)

Curb Ramps*

- Meets Standards
(Satisfactory slope and width, ADA compliant)
- Does Not Meet Standards
(Slope and width substandard, not ADA compliant, or missing)

Bicycle Facilities

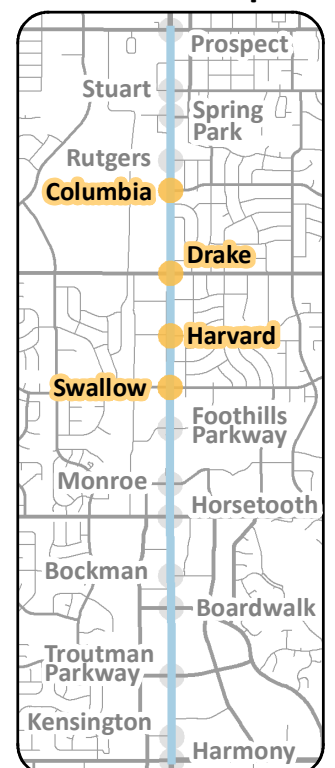
- Bicycle Lanes
- Bicycle Route
- Multi-Use Trail

Scale 1 : 2,500

0 75 150 300 Feet

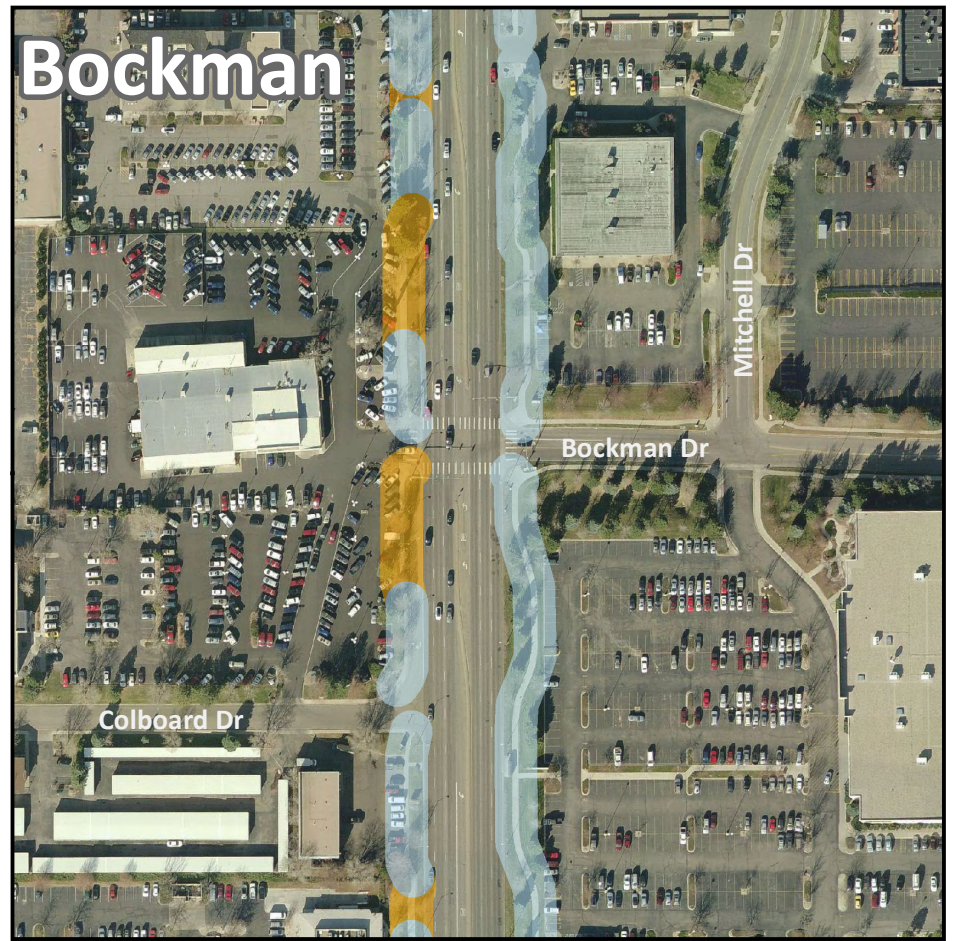
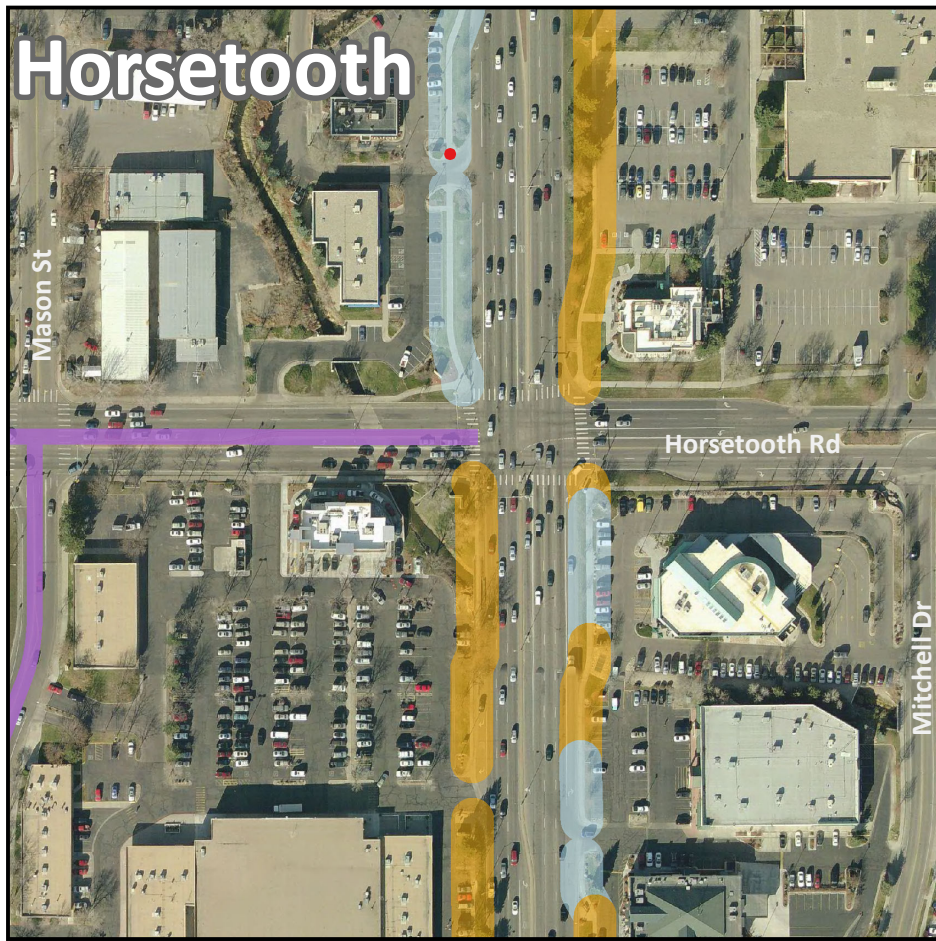
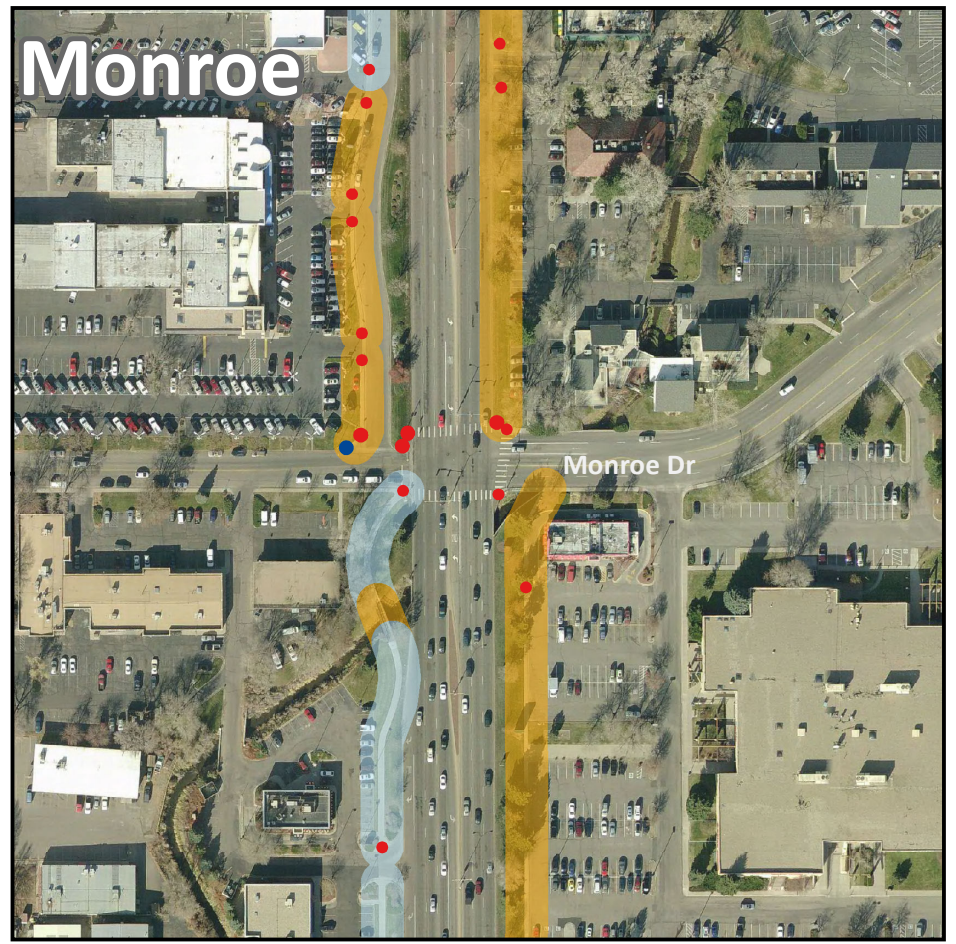


Locator Map



* based on City of Ft. Collins 2011 Inventory

Pedestrian Experience -- Signalized Intersections 3



LEGEND

January, 2014

Sidewalks*

- Meets Standards
(Good or fair condition, min. 5 ft. width, ADA compliant)
- Does Not Meet Standards
(Poor condition, narrow width, not ADA compliant, or missing)

Curb Ramps*

- Meets Standards
(Satisfactory slope and width, ADA compliant)
- Does Not Meet Standards
(Slope and width substandard, not ADA compliant, or missing)

Bicycle Facilities

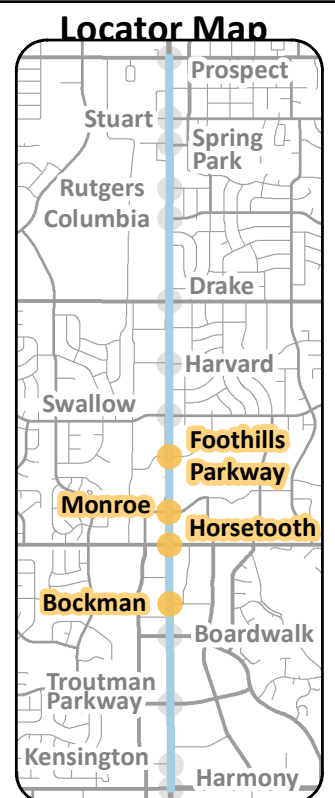
- Bicycle Lanes
- Bicycle Route
- Multi-Use Trail

Scale 1 : 2,500

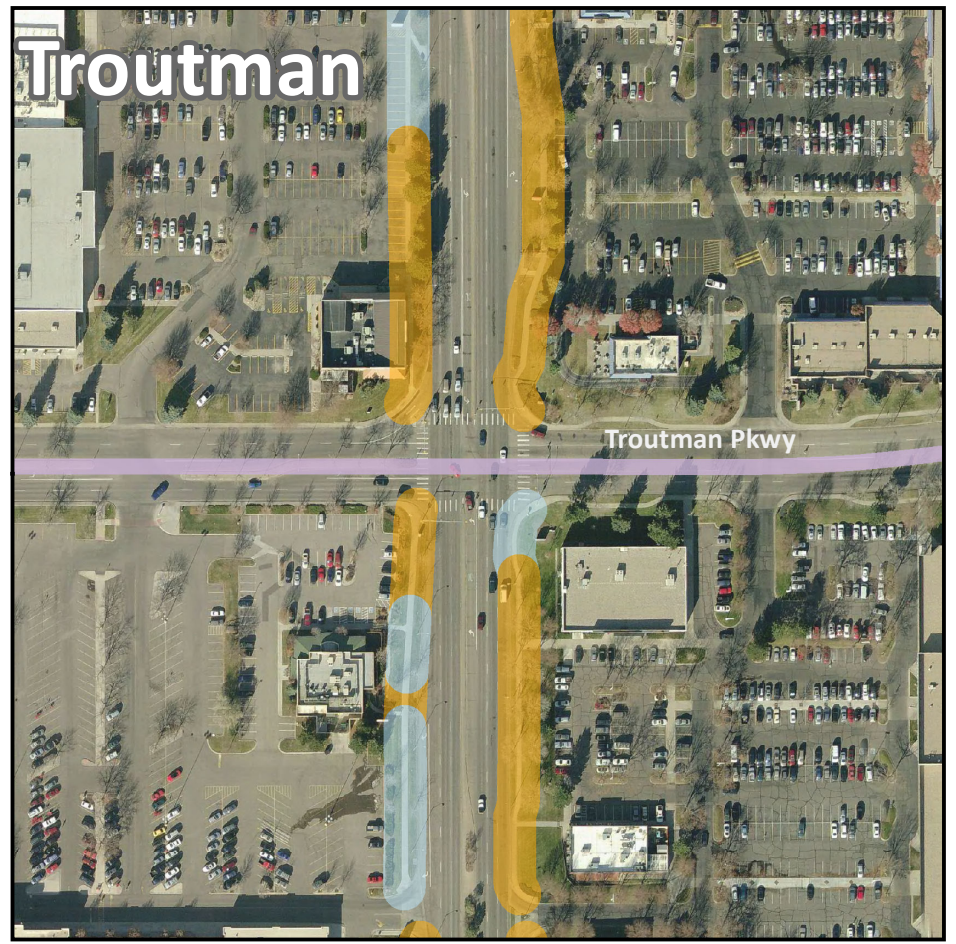
0 75 150 300 Feet



* based on City of Ft. Collins 2011 Inventory



Pedestrian Experience -- Signalized Intersections 4



LEGEND

January, 2014

Sidewalks*

- Meets Standards
(Good or fair condition, min. 5 ft. width, ADA compliant)
- Does Not Meet Standards
(Poor condition, narrow width, not ADA compliant, or missing)

Curb Ramps*

- Meets Standards
(Satisfactory slope and width, ADA compliant)
- Does Not Meet Standards
(Slope and width substandard, not ADA compliant, or missing)

Bicycle Facilities

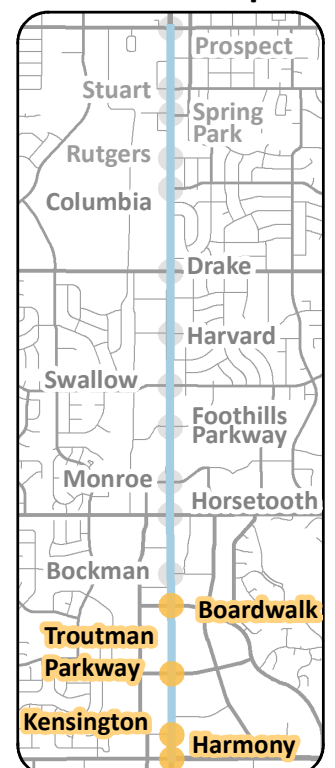
- Bicycle Lanes
- Bicycle Route
- Multi-Use Trail

Scale 1 : 2,500

0 75 150 300 Feet



Locator Map



* based on City of Ft. Collins 2011 Inventory